

The Kitchen Garden

Most of the produce grown in the kitchen garden gets eaten by visitors in our café.

Find the panel with pictures of what the gardeners are growing.

Name five things that they are growing today:

1. _____
2. _____
3. _____
4. _____
5. _____



Walmer Gardens Explorer Trail

Follow in the footsteps of Lords Warden, past and present, to explore the castle's gardens and woodland.



The Oval Lawn

Go and find the 'Wellingtonia' tree. It was named in honour of the Duke of Wellington. He was once the Lord Warden of the Cinque Ports and lived at Walmer Castle in the summertime.

A Wellingtonia can grow to over 50 metres tall in the wild. That's more than 28 Dukes of Wellington stood on one another's shoulders!

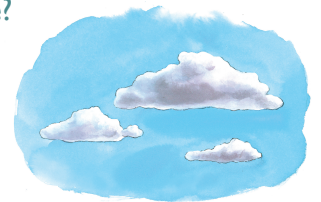
Take a big step. This is about 1 metre. Now, count 50 steps and you'll see just how tall the Wellingtonia can grow!



The Broadwalk

The yew hedges that line the broadwalk are cut into unusual shapes, like clouds from the sky.

Are there any clouds in the sky today? If so, what shapes can you see?



Design your own hedge

The Wellingtonia's real name is *Sequoiadendron giganteum* which is difficult to say! Why don't you try? **Se-quoi-a-den-dron gi-gan-te-um**

The Paddock

The paddock changes throughout the year. Sometimes the grass is tall, sometimes it is short.

Kneel or lie down and look into the grass. What creatures can you see? You must look like a giant to them!



Draw or write down what you can spot

The Glen

The Glen was once a quarry for digging chalk. It was made into a garden by William Pitt the Younger and Lady Hester Stanhope.

Look around the Glen.

The environment here is different from the rest of the gardens. It is sheltered from the wind.

Stop, close your eyes and listen carefully.

What can you hear?

Tell your group what you heard.

Did you hear the same things?



The Woodland

There are many different types of tree in the woodland.

You can find lots of unusually shaped leaves here. Which ones can you find on the ground? Can you find the leaves that match the outlines below?



European Ash
Fraxinus excelsior



English Oak
Quercus robur



Common Beech
Fagus sylvatica



Common Lime
Tilia x europaea



Yew
Taxus baccata



Holly
Ilex aquifolium

The Queen Mother's Garden

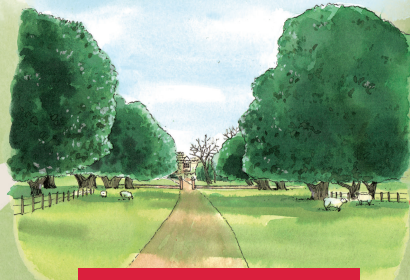
This is a peaceful place where you can enjoy watching the wildlife in the pond.



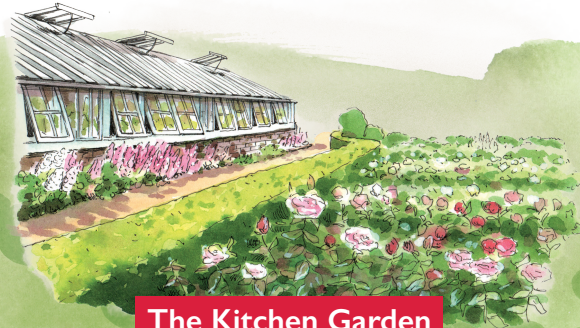
What can you spot in the pond today?

Don't forget to be very still and quiet so you do not scare the creatures away!

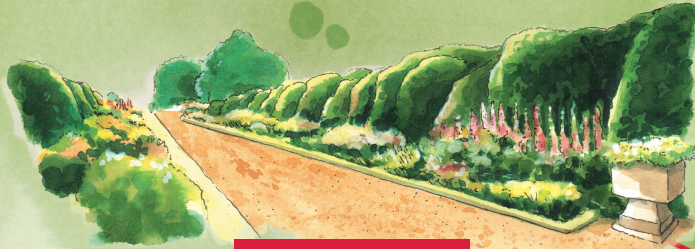
Draw or write down what you can spot



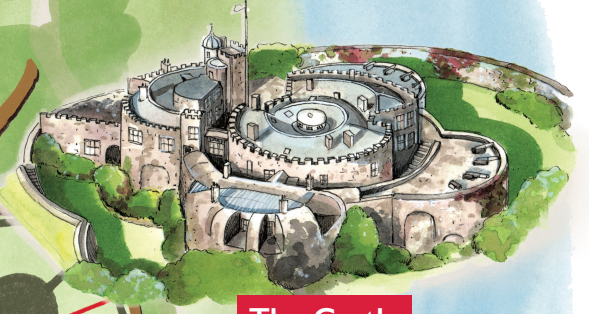
Holm Oak Avenue



The Kitchen Garden



The Broadwalk



The Castle

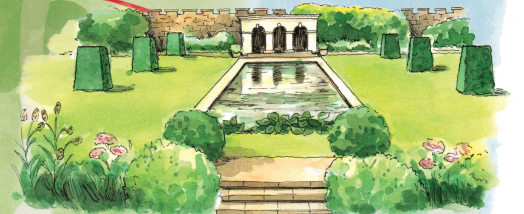


The Glen



The Woodland Walk

The Oval Lawn



The Queen Mother's Garden