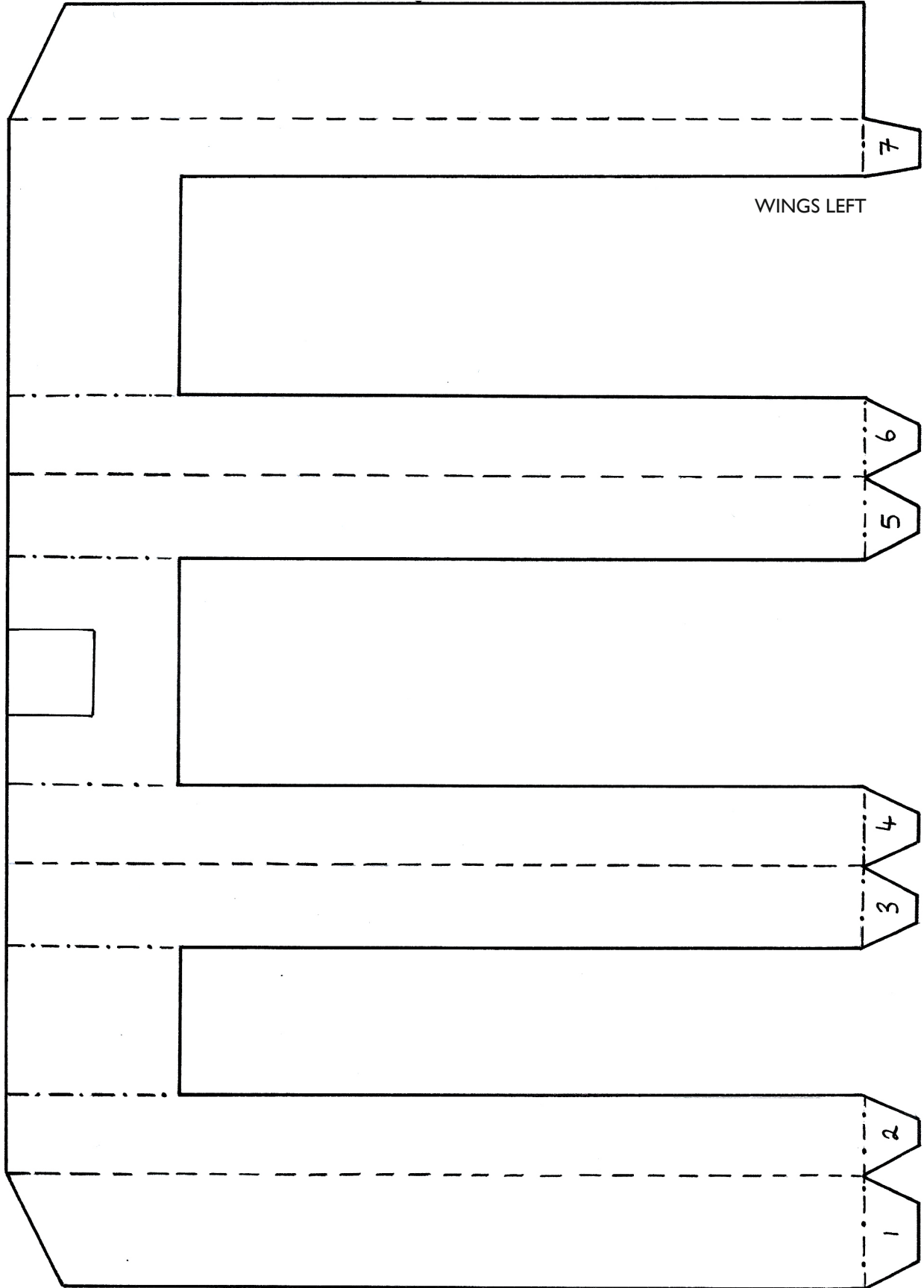


Attach to stage front



WINGS LEFT

Attach to back panel

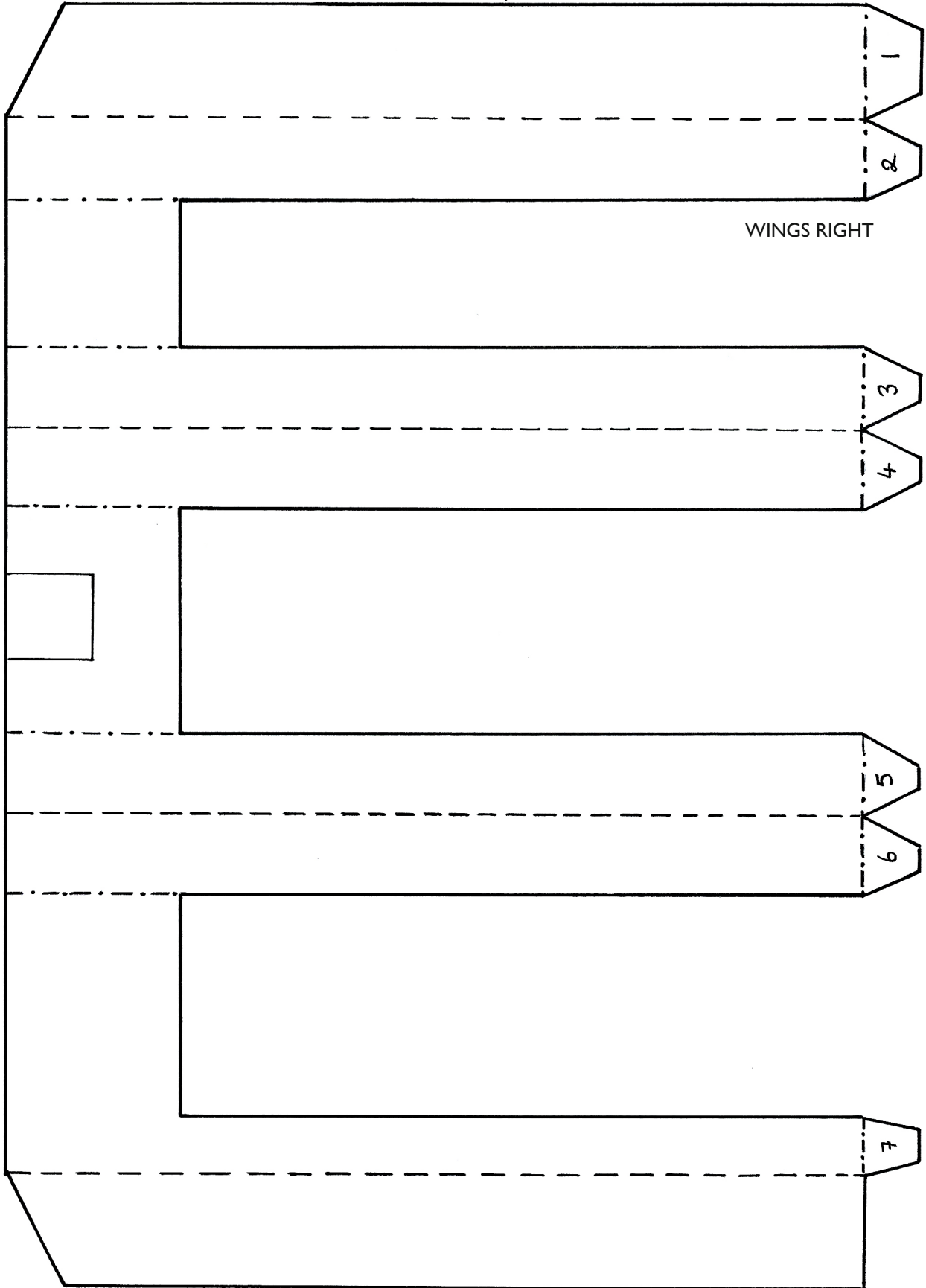
MAKE YOUR OWN VICTORIAN TOY THEATRE

Print out these templates, then follow the instructions online at
www.english-heritage.org.uk/xxxxxxxxxx



ENGLISH
HERITAGE

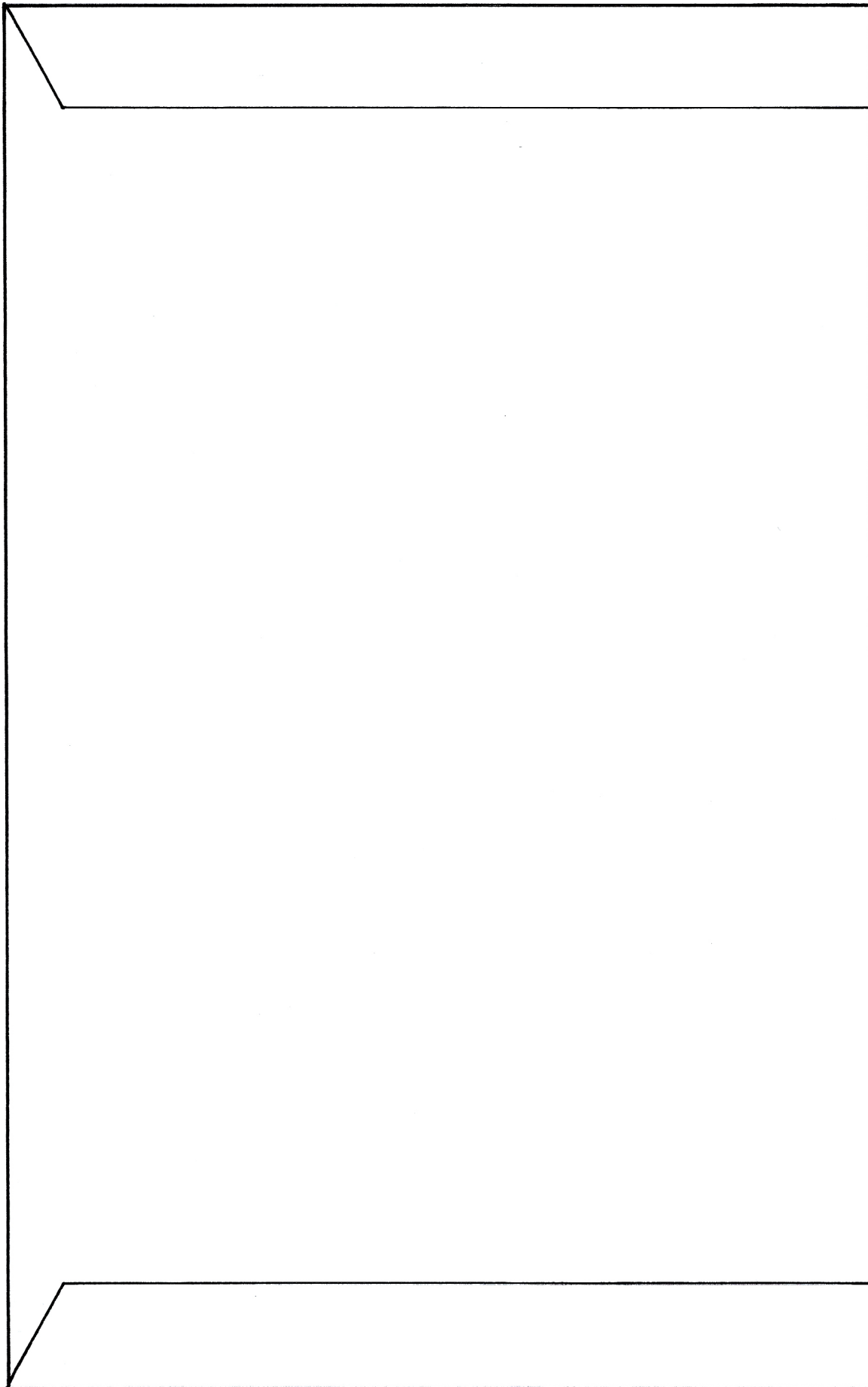
Attach to back panel



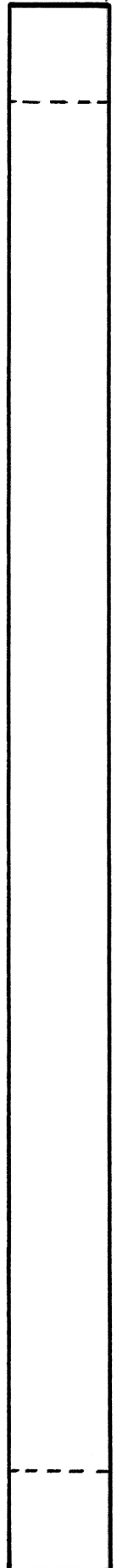
WINGS RIGHT

Attach to stage front

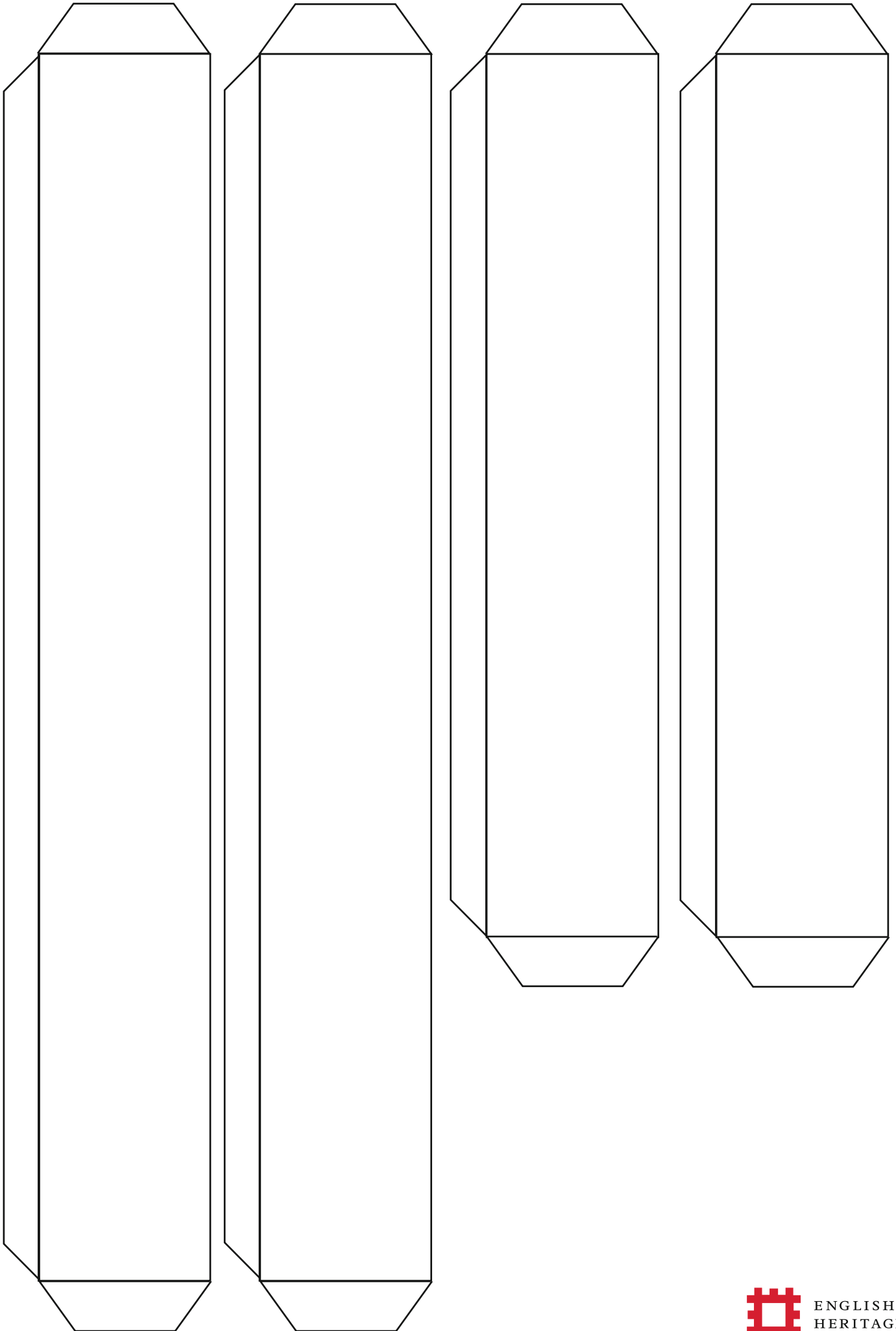
BACK PANEL

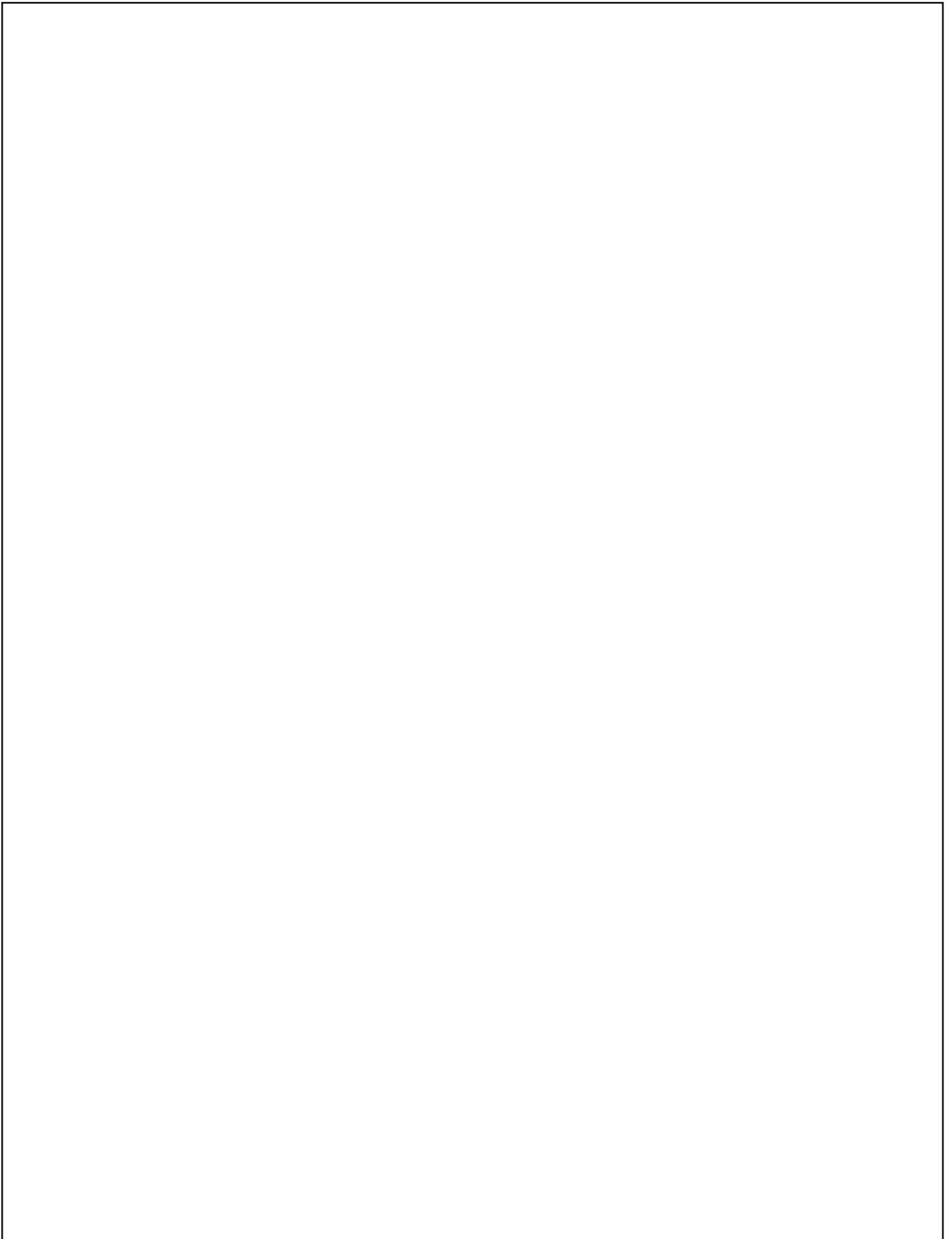


SUPPORT BAR

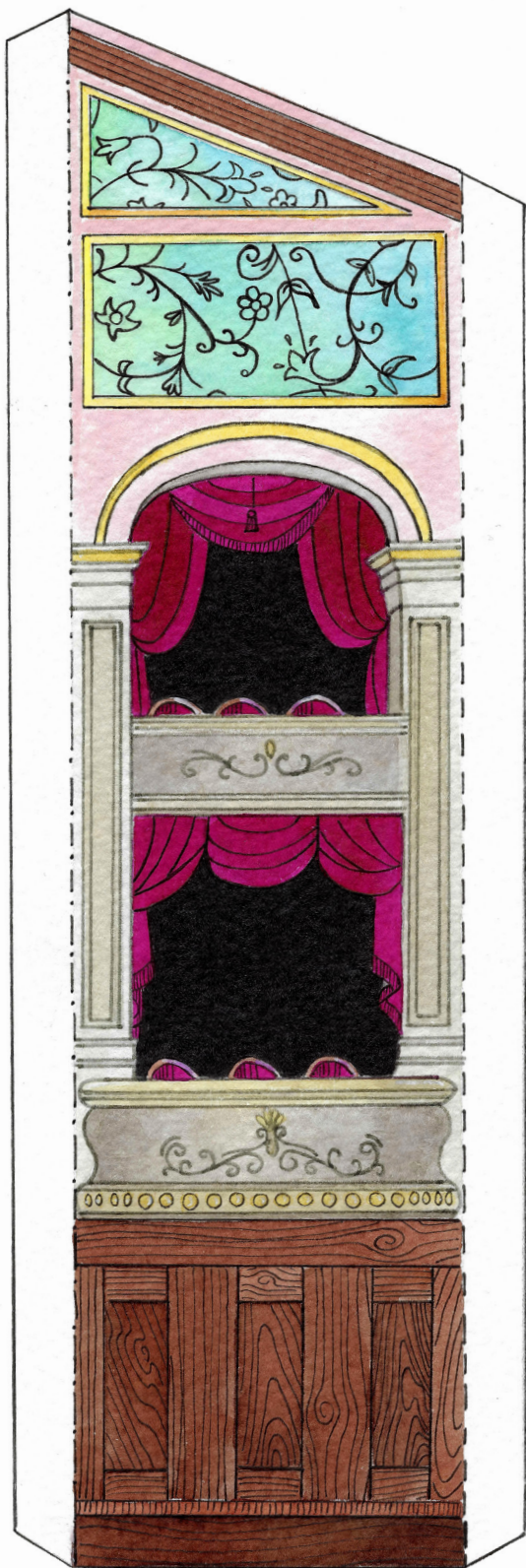


BASE SIDES

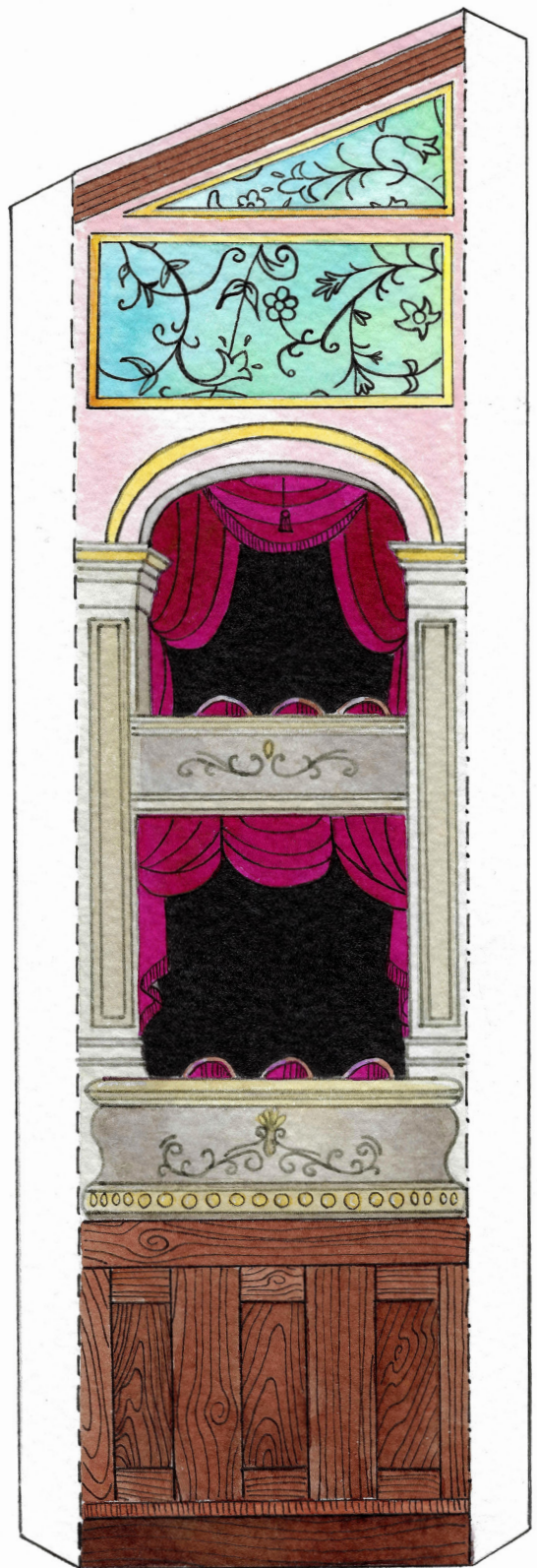




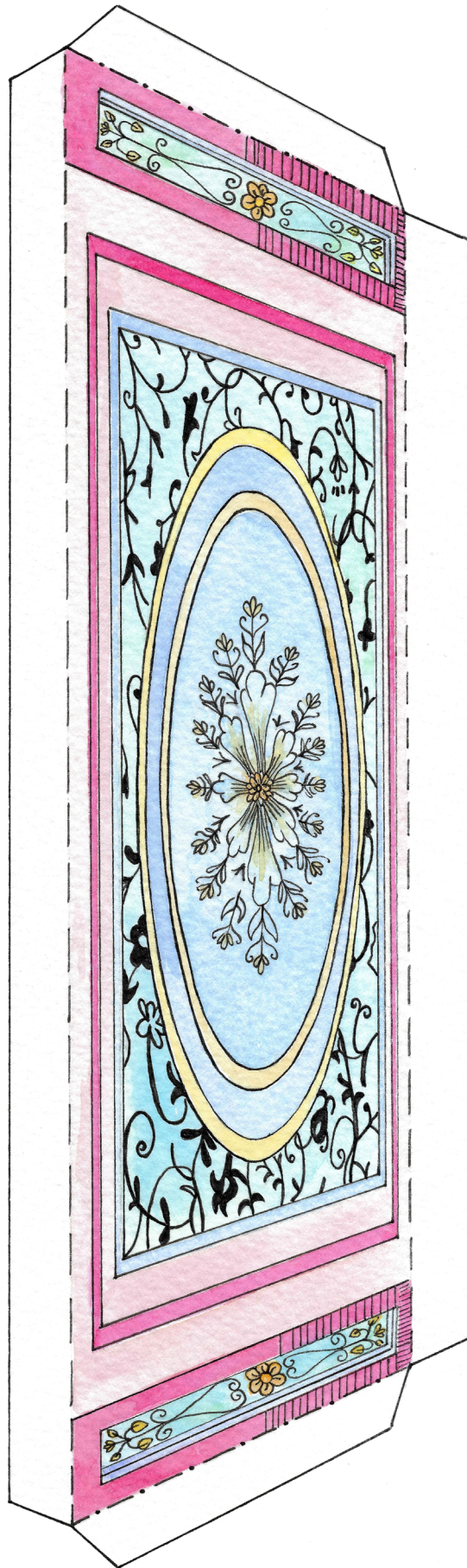




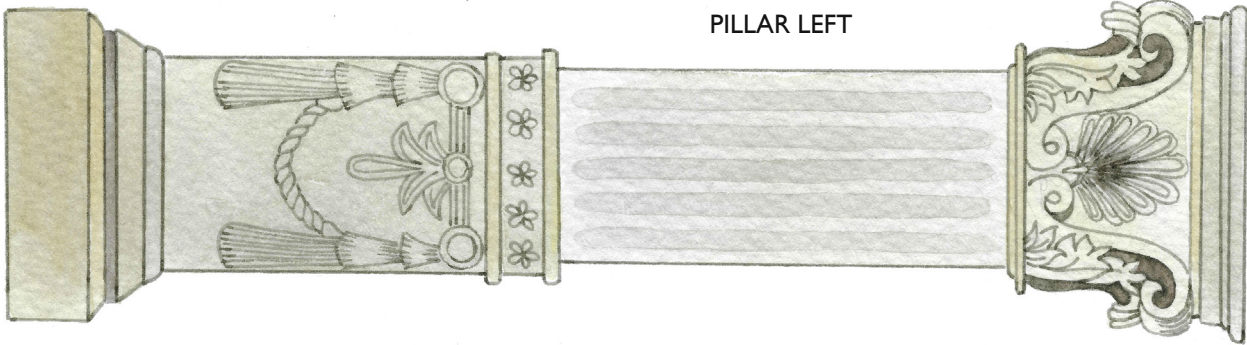
BOXES LEFT



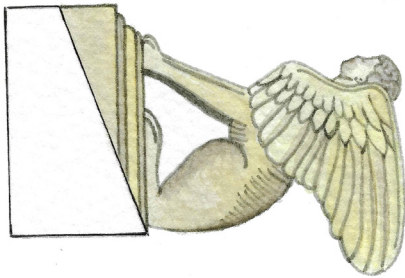
BOXES RIGHT



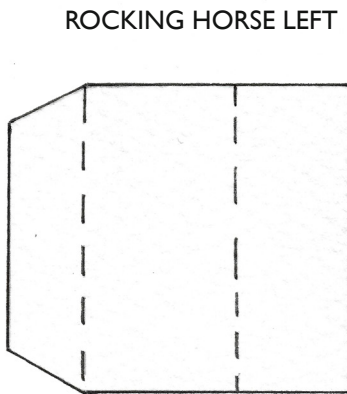
CEILING



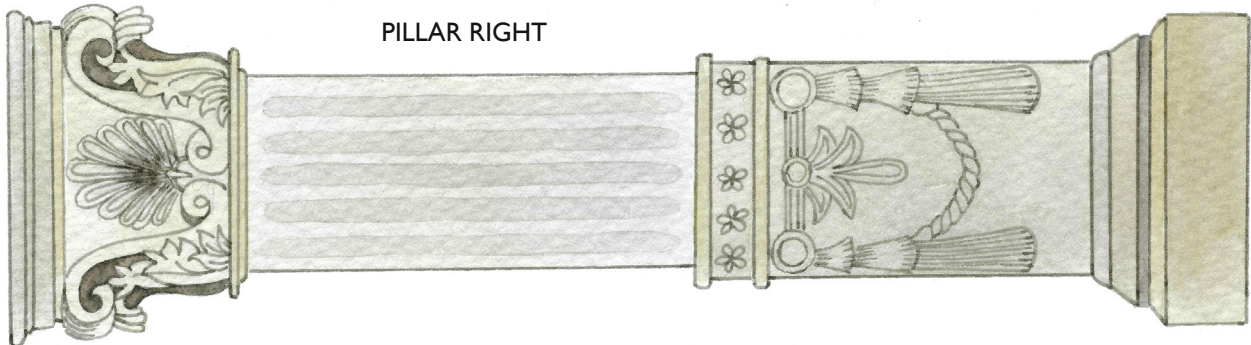
PILLAR LEFT



GARGOYLE LEFT



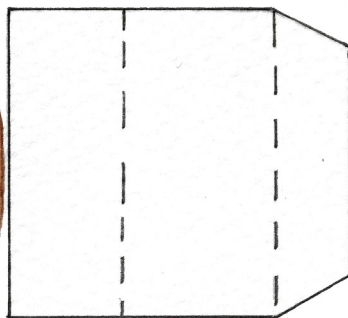
ROCKING HORSE LEFT



PILLAR RIGHT

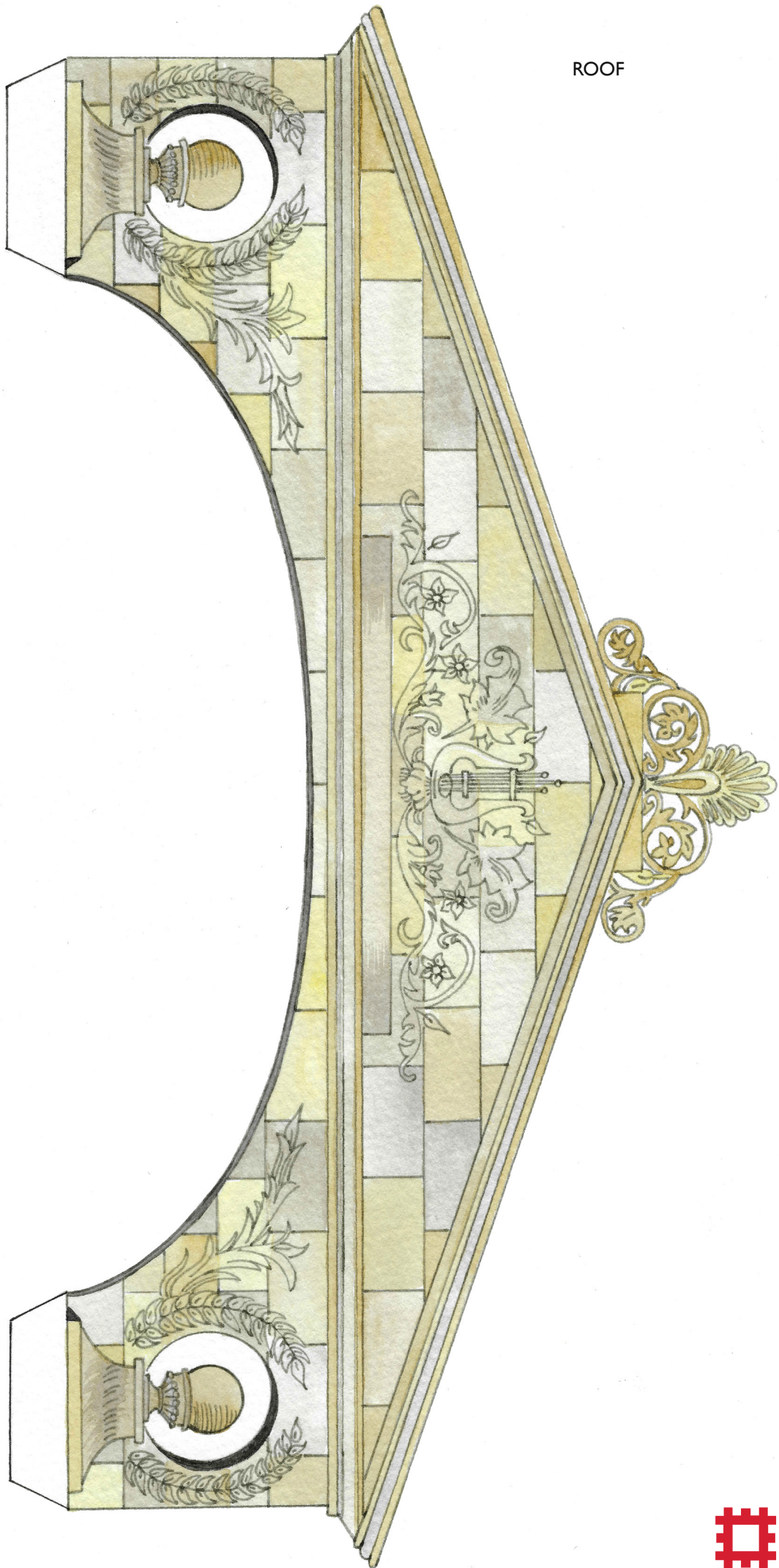


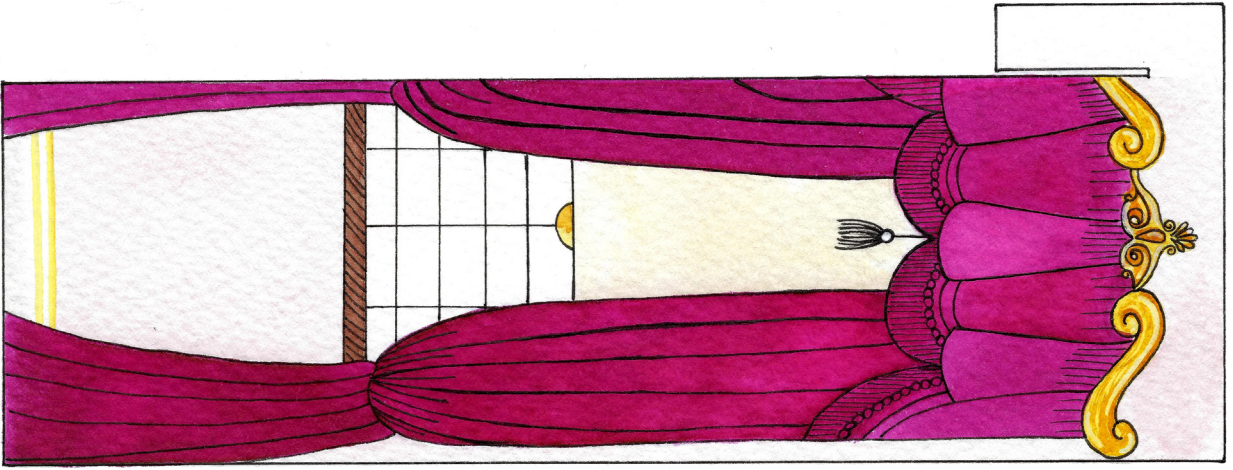
ROCKING HORSE RIGHT



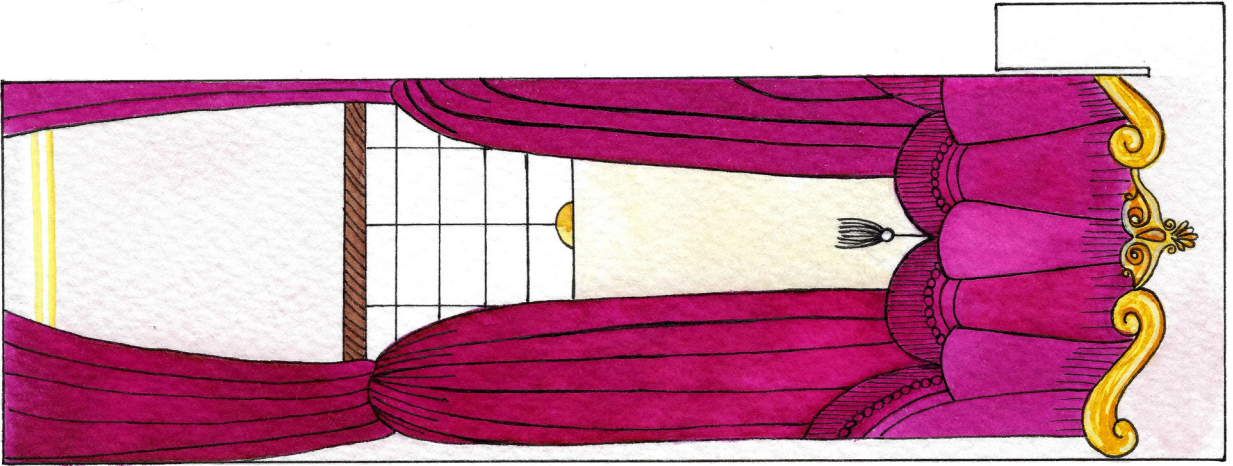
GARGOYLE RIGHT

ROOF

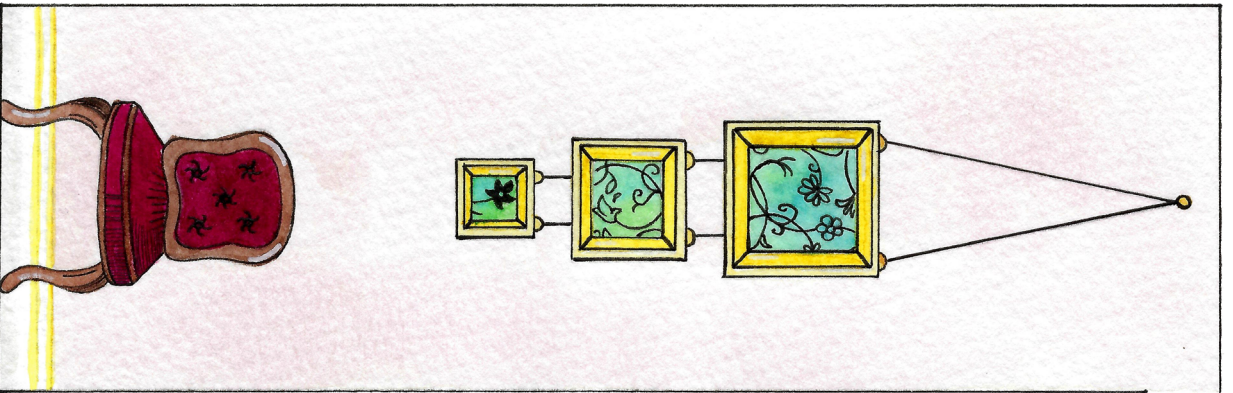




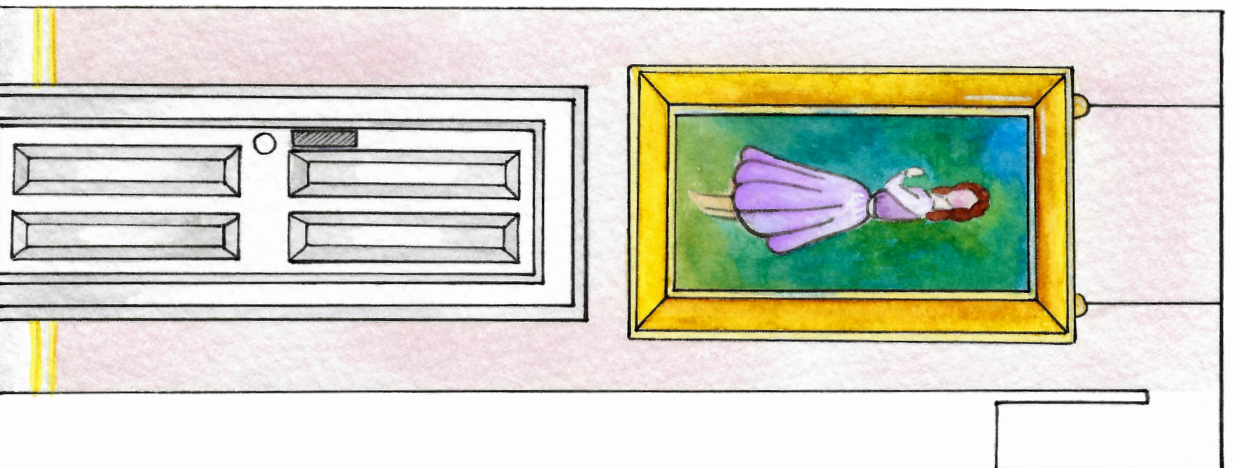
SCENERY - LEFT BACK



SCENERY - LEFT FRONT



SCENERY - RIGHT BACK



SCENERY - RIGHT FRONT

STAGE FLOOR

Wings right

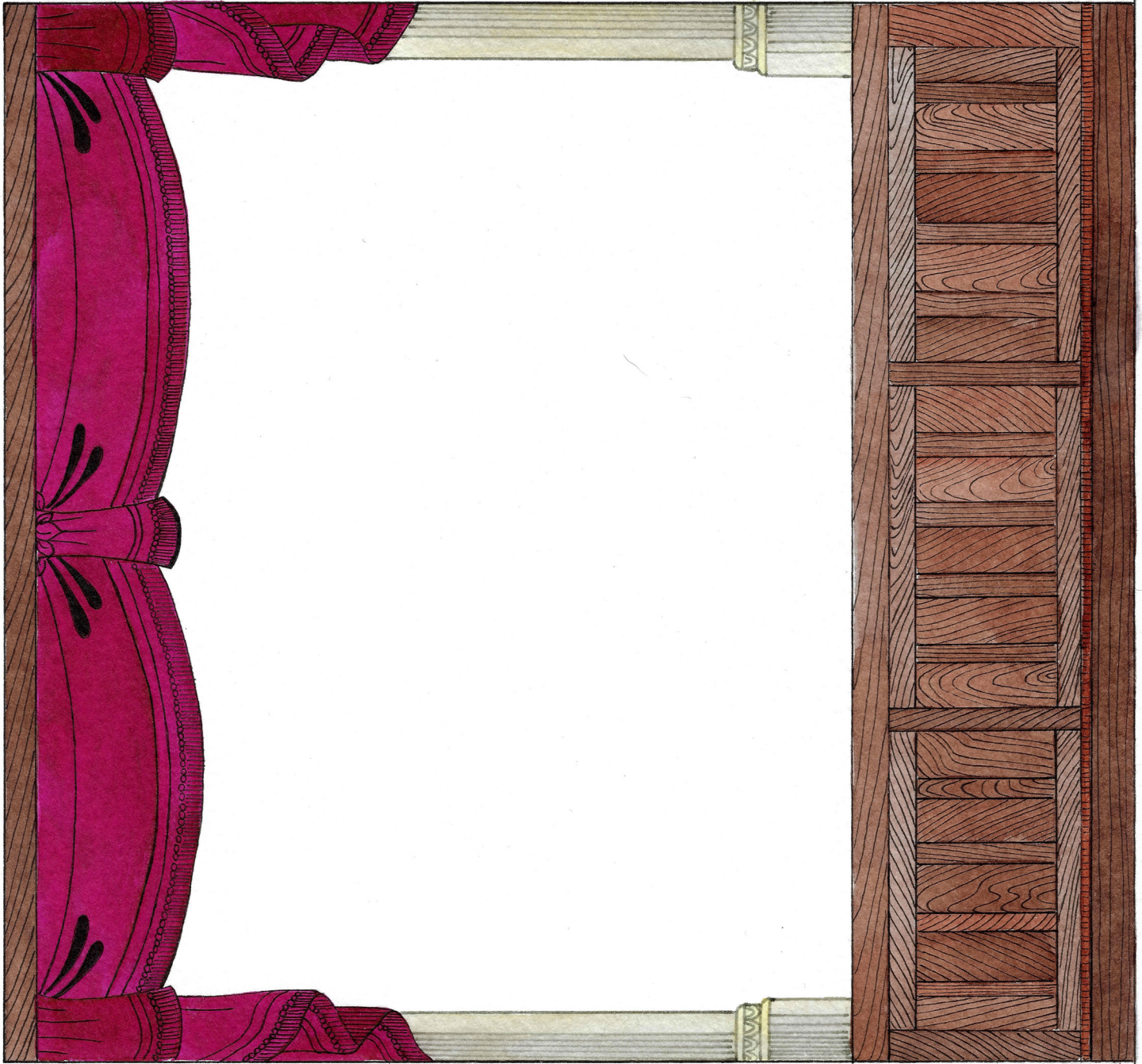
back of theatre

Stage front

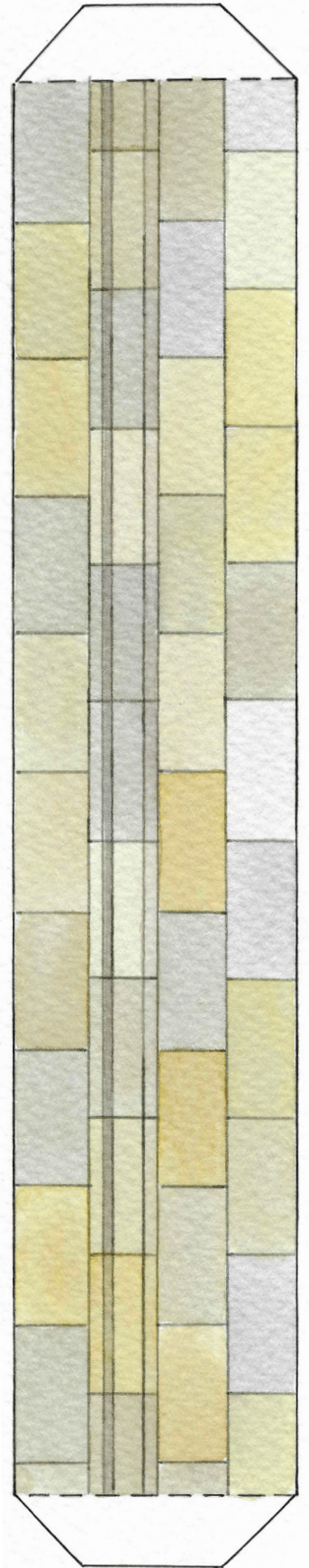
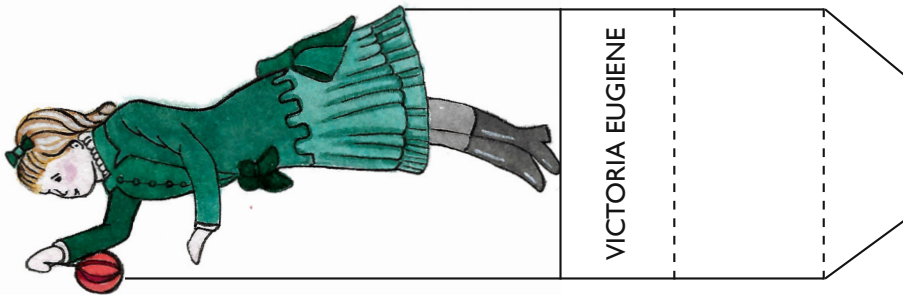
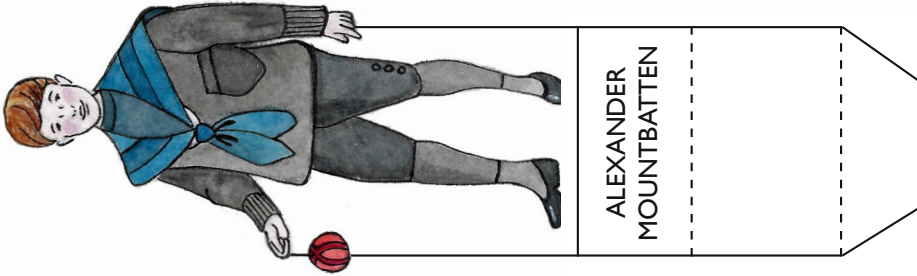
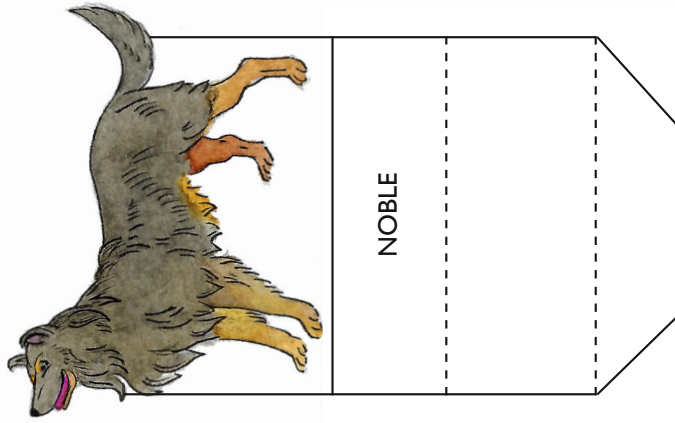


Wings left

STAGE FRONT

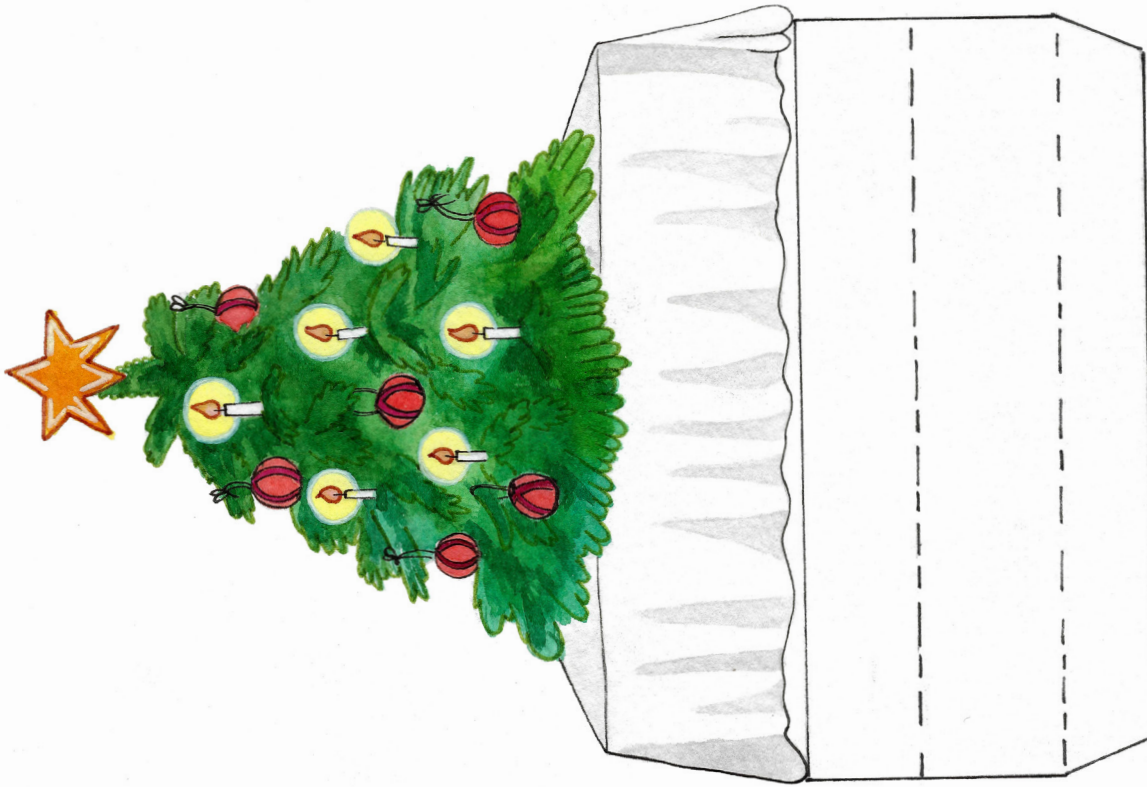
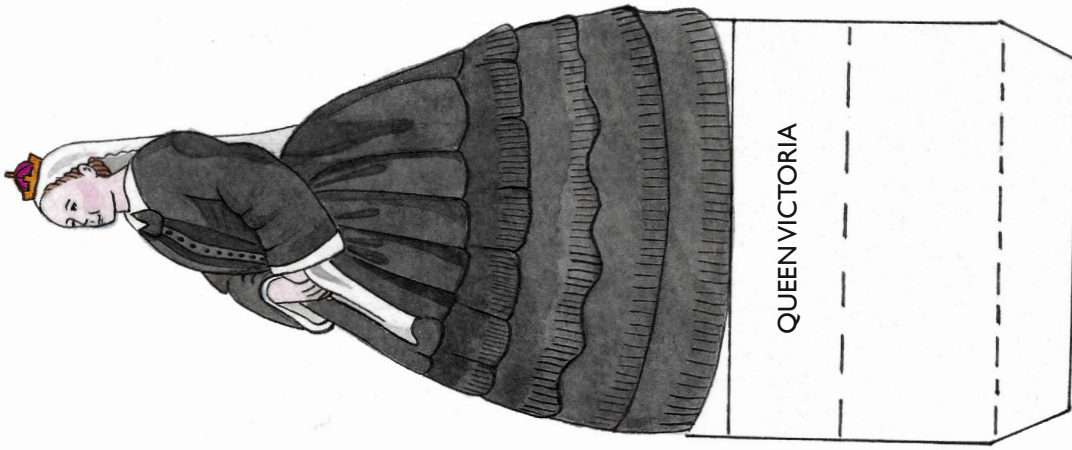


CHARACTERS



FRONT WALL

CHARACTERS



GIFTS

