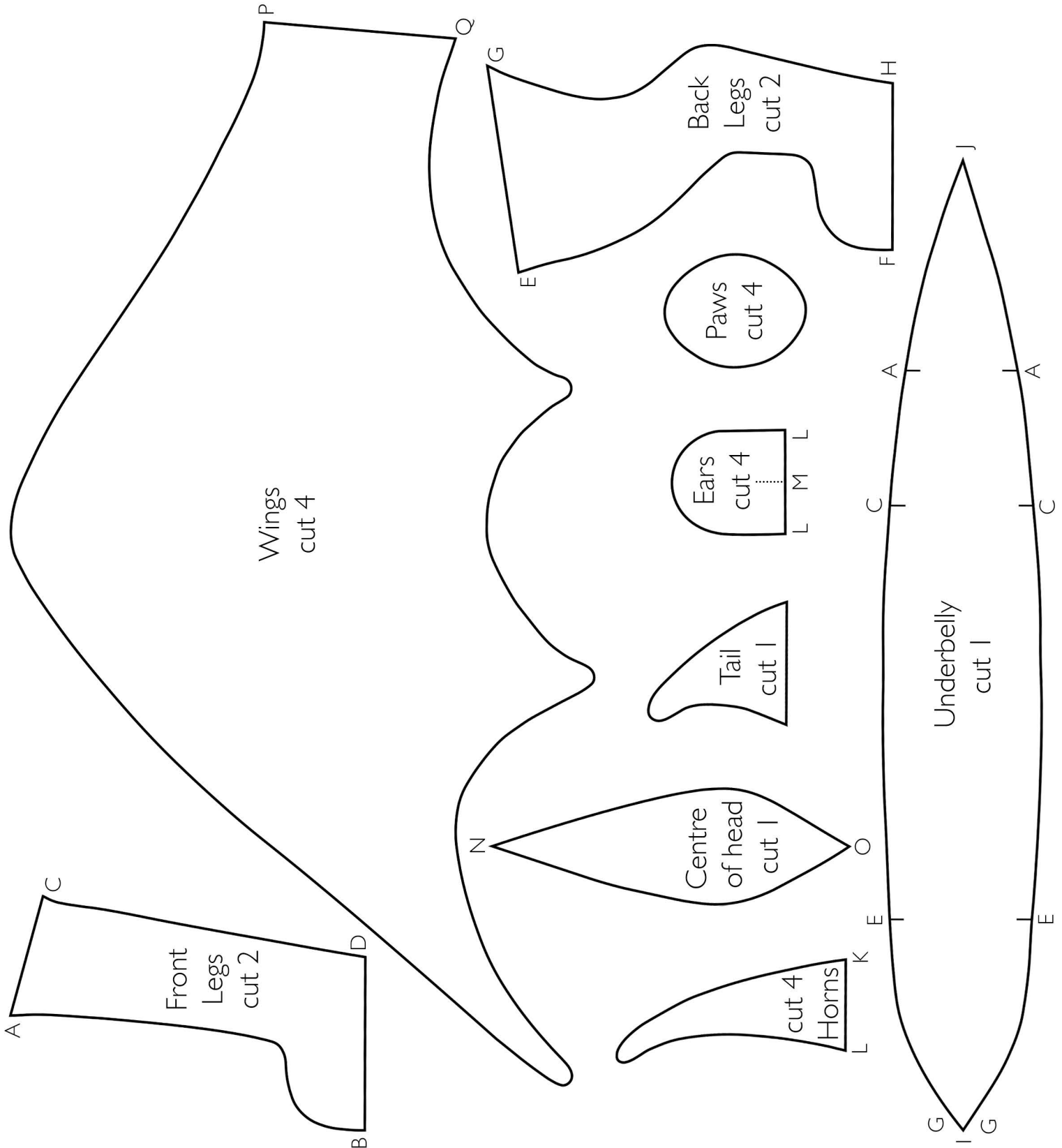


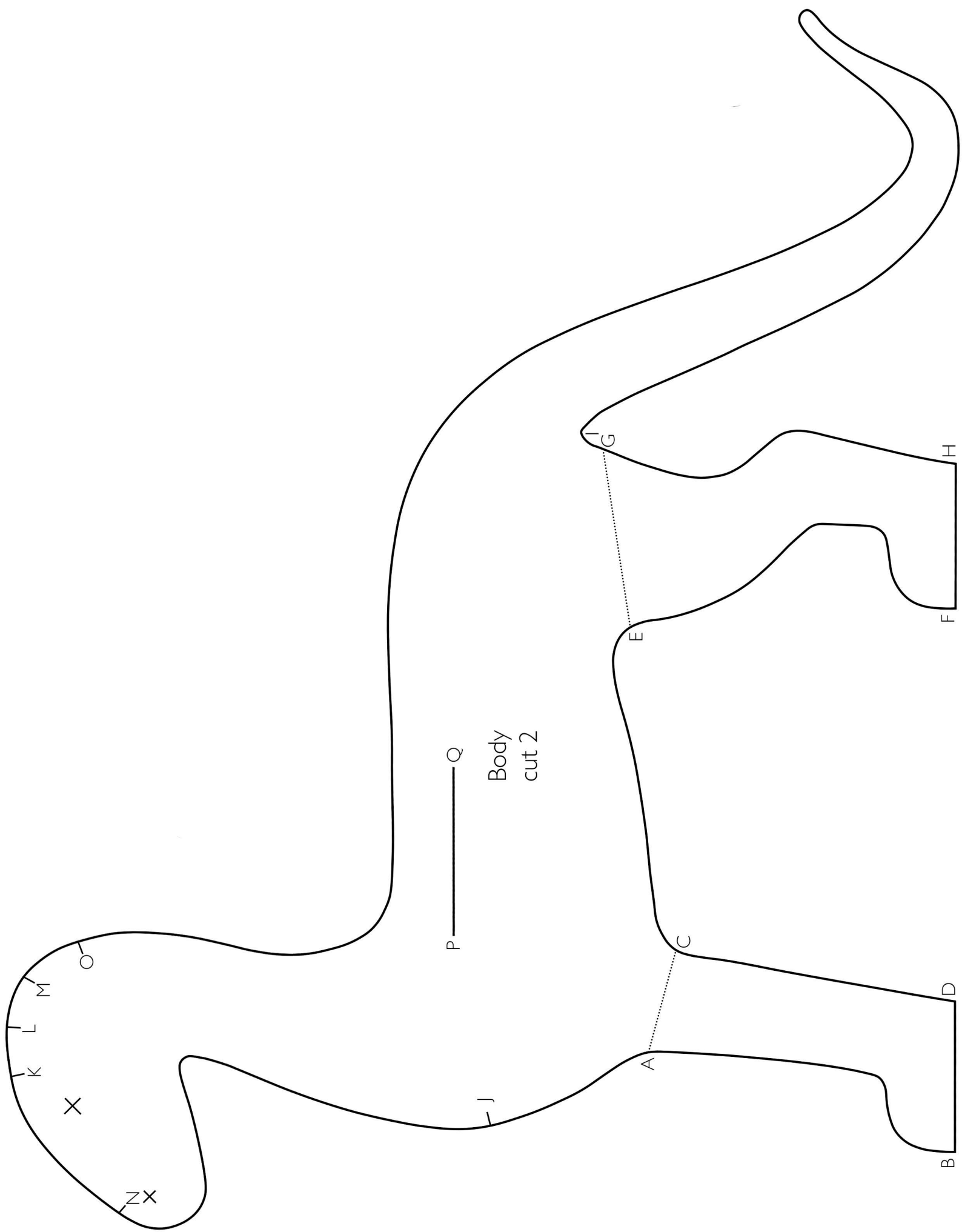


Print out this pattern and follow our tutorial to create your own felt dragon.

Discover more about the legend of St George and the Dragon here:

www.english-heritage.org.uk//visit/whats-on/st-georges-day/







YOU WILL NEED

- Dragon sewing pattern
- A pen
- Scissors
- Pair of soft toy eyes
- Needle
- A bag of stuffing
- A chopstick or device for stuffing the tail
- Optional pipe cleaners for the wings
- Thread in a colour that matches your felt
- Three colours of felt (approximately 6cm x 10cm of white for the horns, three A4 felt sheets of your main dragon colour and one A4 felt sheet for your secondary colour)

CUTTING OUT

1. Print out the dragon sewing pattern and use the scissors to cut out the pattern pieces.
2. Place the pattern pieces onto your felt and use the pen to trace around the outline.
 - White felt
 - Horns, trace two, flip pattern piece, trace another two
 - One of your chosen felt colours
 - Body, trace one, flip pattern piece, trace another one
 - Wings, trace one, flip pattern piece, trace another one
 - Ears, trace two
 - Centre of head, trace one
 - Front legs, trace one, flip pattern piece, trace another one
 - Back legs, trace one, flip pattern piece, trace another one
 - Your other felt colour
 - Wings, trace one, flip pattern piece, trace another one
 - Tail, trace one
 - Paws, trace four
 - Ears, trace two
 - Underbelly, trace one
3. Carefully cut out the pattern pieces from your felt.

TECHNIQUE

This pattern uses a simple over stitch (also called whipstitch or slipstitch) to sew the pieces of felt together. Thread your needle and use single thread thickness throughout. Start and finish each row of stitches with either a tiny knot in the thread or several small stitches in the same place. Pull the needle from one side of the felt to the other in a looping motion. Aim to stitch as neatly as possible with stitches approximately 3mm from the edge.

CREATING THE DRAGON

1. Lay one front leg piece against the front leg of one of the body pieces., the front leg piece will form the inside of the dragon's front leg. Try to line up the corresponding letters marked on the pattern pieces e.g. line up A to A. If you have any pen outline on your felt, ensure that it is on the inside of the two felt pieces so that it will be hidden.

Sew along the front edge of the leg, from A to B, then sew the back of the leg from C to D. Don't sew the base of the foot, from B to D, as we need this to attach the paws later. Repeat with the other front leg piece onto the second body piece, but ensure to sew this inner leg to the opposite side of the second body piece. You should end up with two mirrored body pieces that you can place together with the front leg body pieces sew into the inside of the legs.

2. Lay one back leg piece against one of the body pieces, lining it up with the corresponding letters on the pattern. Ensure that it's laid down on the same side of the body piece that the front leg is sewn to. Sew from E to F, avoid sewing the base of the foot and sew from G to H. Repeat with the second back leg on the other body piece.
3. Take one of the four paw pieces and sew it to the base of one of the dragon's front legs. This will involve sewing a semicircle from point B to D on the inner leg piece then round from D to B at the base of the dragon body piece - leaving you with a 3D circle at the base of the front leg. It can be helpful to fold the paw fabric and sew several loose temporary stitches to line everything up. Repeat for the front paw and the two back paws.
4. Place one of the ear pieces on top of another ear piece cut from the second felt colour. Sew around the outside to attach the two, then fold along the centre and sew along the flat edge (from M to L). Repeat for the second ear.
5. Take two of the four horn pieces that face in opposite directions, place them together so that any pen marks will be concealed on the inside. Sew around the outside edge, leaving the flat edge open (from K to L). Add a small amount of stuffing into the horn using the chopstick. Sew along the base, and repeat for the other horn.
6. Place one of the wing pieces on top of another wing piece cut from the second felt colour. Sew around the edge, but leave the flat edge (from P to Q) open. Repeat for the second wing.

7. Line the underbelly piece up with the inside of one of the body pieces (the same side that the inside leg pieces are sewn to). The long thin end of the underbelly should line up with the dragon's chest. Attach the underbelly by sewing from I to G on the body piece, then from G to E at the top of the back leg pattern piece. Continue by sewing from E to C on the body piece, then from C to A at the top of the front leg pattern piece. Finish attaching the underbelly to this half of the body by sewing from A to J on the body piece. Repeat by sewing the other side of the underbelly piece to the opposite body piece. You should now have the two body pieces joined with an underbelly of the second felt colour between them.
8. Position the tail piece in between the two body pieces' tail section. Sew around the tail, holding the tail piece in place and joining the two body pieces further.
9. Using the X symbols on the dragon pattern, gently mark out the position for the eyes and nose. Make small marks for the placement of the wings, the centre of the head, the horns and ears. Use the letters to help determine placement, with N to O marking the centre of the head, P to Q marking the wings, K to L marking the horns and L to M marking the ears.
10. Sew several stitches in the spot marked out for the nose, aiming to create a small circular nostril. Repeat for the other side of the head. Create two small holes for the soft toy eyes and push them through, using the plastic back to secure.
11. Roughly sew the horns and ears together with a small amount of overlap between them. The horn should be in front of the ear with the ear on the outside. Sew the horn and ear into the spot marked on the head of the body piece and repeat on the opposite side.
12. Take the two body pieces and sew from the top of the underbelly piece to the area marked for the centre of the head piece (from J to N). Then place the centre of head piece in the middle of the two body pieces' head sections, the long thin end should face the front of the dragon. Sew from N to O along one side of the head of the body piece, sealing in the horns and ears, then repeat with the other body piece.
13. Carefully use the scissors to cut open a slit for the wings. Push the wings through the holes, ensuring that the top of the wing has the same felt colour as the dragon body. Sew from inside the dragon through from the body piece through both sides of the wing and then underneath back into the body piece to firmly attach. Optionally, if you want poseable wings add pipe cleaners to the inside of the wings. and twist together.
14. Fill the dragon with stuffing using the chopstick for difficult to reach areas. Sew along the final section, joining together the two body pieces... and the dragon is complete!!!