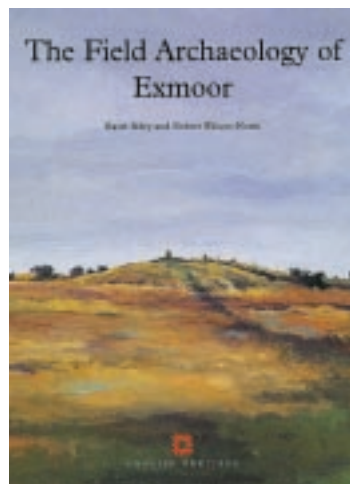


# New Publications

from English Heritage

## The Field Archaeology of Exmoor

by Hazel Riley and Rob Wilson-North



A wealth of fascinating and diverse archaeology lies concealed in Exmoor's valleys, woods and moorlands. Six years of original survey work have sought out the evidence from prehistoric stone settings and burial mounds to medieval castles, lost settlements and 19th-century industrial remains. This comprehensive programme of recording deployed the techniques of field survey, aerial photographic transcription, air and ground photography, and recording standing buildings.

The Field Archaeology of Exmoor presents this distinctive heritage, for the first time, to the general reader and the specialist alike, and tells the story of the development of Exmoor's landscape from the Stone Age until the World War II. It is illustrated in colour.

- Reconstructions by the artist Jane Brayne and a series of stunning air photographs bring Exmoor's story to life
- Detailed plans and interpretative drawings complement the authoritative text
- Particular areas and ideas are explored in detail through the use of special landscape studies

The book has immediate appeal for those who know Exmoor – its residents and visitors – and

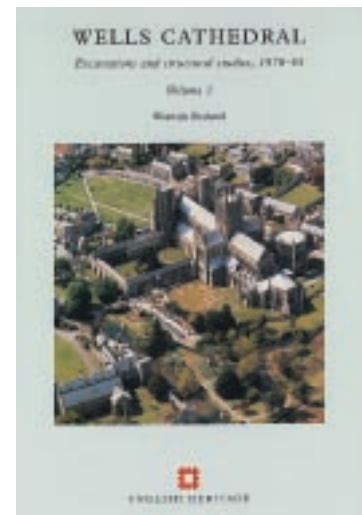
are interested in its history. It is also essential reading for those who study upland landscapes and field archaeology.

PRICE £12.95 ISBN 1 873592 58 2  
PRODUCT CODE XA20019

## Wells Cathedral

Excavations and structural studies, 1978–93

by Warwick Rodwell



A programme of archaeological excavation, architectural survey, and historical research carried out between 1978 and 1993 elucidated the origins and explored the early development of Wells Cathedral. The study concentrated primarily on the cloister and its adjuncts, and excavation took place in the adjoining 'Camery' garden. Here lay an ancient cemetery and the foundations of a succession of demolished buildings, ranging in date from Roman to post-medieval. Collectively, these enshrined a continuous development of religious and sepulchral activity, probably from the fourth to the mid-16th century; secular uses followed thereafter. Adjacent to the Camery is the group of springs from which Wells takes its name, and the first mention of the 'holy well' and minster church of St Andrew is in 766.

Excavation yielded a complex stratigraphic sequence, demonstrating how an anonymous

late Roman burial in a mausoleum probably provided the *raison d'être* for the development of a middle Saxon cemetery and chapel, and hence for the origins of Wells Cathedral itself in AD 909. The establishment of this sequence is uniquely important in the history of English cathedral archaeology and sets Wells alongside developments in continental Europe.

In c 1175 construction began on a wholly new church at Wells, in the Early English style, on a site immediately north of the old cathedral. The present cloister was then laid out on its site, and the memory of this ancient locus sanctus was perpetuated by a succession of chapels that were incorporated in the new development. The growth and demise of these chapels, together with the history and architecture of all other structures associated with the cloister, has been studied. The history of the springs, the well-heads, and the medieval conduits and pipes that emanated from them is also traced.

In addition to the elucidation of structural sequences, studies of sculptural remains and other artefacts are included in the second volume. Among the former are the remarkable Anglo-Saxon font, that continues in use today, and the large collection of decorated medieval floor tiles. Important sculptural assemblages from the chapels, dating from the mid-thirteenth and late-fifteenth centuries, respectively, are also described. Finally, the study of three hundred burials is described, from the points of view both of palaeopathology and sepulchral history.

**PRICE £150** (2 volumes, case bound in a slipcase)  
**ISBN 1 85074 741 5** **PRODUCT CODE XA20008**

## Timber

### Dendrochronology of roof timbers at Lincoln Cathedral

edited by R R Laxton, C D Litton and R E Howard

Volume 7 of the English Heritage Research Transactions is a ground-breaking study of the dendrochronology, or tree-ring dating, of the roofs of Lincoln Cathedral. The authors compiled data from sampling of over 500 oak timbers from nine different roofs on the Cathedral, and found three distinct periods of oak felling: 1192-1280 (medieval construction), c 1500-c 1570 (post-medieval repairs) and c 1660-c 1750 (early-modern repairs). In each case the tree-ring dates, in

conjunction with other evidence, were used to date the constructions and repairs to the roofs. The authors discuss the problems of loss of sapwood and, in the early-modern period, of seasoned timbers that can make accuracy in dating difficult. This volume contains details of all the dating undertaken over the last twenty years. The volume is a valuable case study on the use of dendrochronology in the analysis of a complex historic site, and an important contribution to the discipline.

In association with James and James  
(Science Publishers) Ltd

**PRICE £30**  
**ISBN 1 902916 03 4** **ISSN 1461 8613**  
**PRODUCT CODE XC20036**

## Timber

### The EC Woodcare Project

#### Studies of the behaviour, interrelationships and management of deathwatch beetles in historic buildings

edited by Brian Ridout

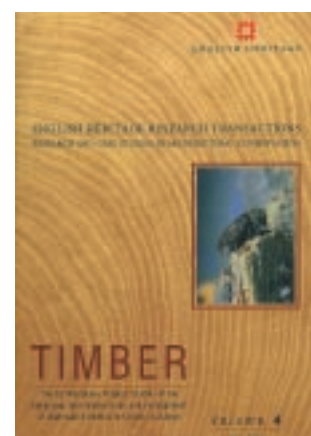
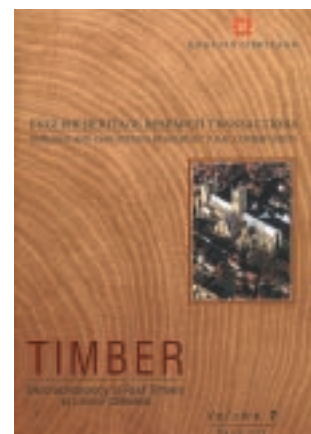
Volume 4 of the English Heritage Research Transactions is a record of the Woodcare conference, held in London in September 1998. This international gathering discussed technical and scientific matters related to structural oak timber decay in historic buildings and studies of deathwatch beetles (*Xestobium rufovillosum*), the virulent pest species found in north-west Europe but also extant in similar temperate zones across the world.

The Woodcare project, funded by the European Union's Fourth Framework Environment R&D programme, studied the interaction of deathwatch beetles and timber in historic roof spaces, taking into consideration the ages of timbers, the relationship of beetles to fungi (in particular, *Donkioporia expansa*, the oak rot fungus), natural predation and the environment.

Additional papers cover the mating behaviour of the deathwatch beetle, pesticides and non-destructive diagnostics as tools for structural timber infestation assessment.

In association with James and James  
(Science Publishers) Ltd

**PRICE £30**  
**ISBN 1 873936-65-6** **ISSN 1461 8613**  
**PRODUCT CODE XC20029**



## Gilding

### Approaches to treatment

edited by Jeremy Noel-Tod and Victoria Boyer



Gilding is to be found on a wide range of materials across the spectrum of the visual arts and its conservation spans many fields, including metalwork, architecture, sculpture, paintings, frames, furniture and other artefacts.

This book presents papers from the landmark conference, 'Gilding: Approaches to Treatment', held in September 2000, the aim of which was to achieve a greater understanding of the reasons and variations in the approaches to the treatment of gilded materials.

Not only are technical details of individual conservation projects described, but the papers also discuss the complex decision-making processes involved, covering such questions as the most appropriate materials to use and the extent of conservator intervention. Collection management issues are addressed, including the planning of conservation and care for large numbers of objects belonging to a single organisation, as are the social values that can be involved when deciding upon the final appearance of conserved gilded objects.

*Gilding: Approaches to Treatment* puts on record current thinking and practice from leading conservation specialists. It will lead to an increased understanding of the shared issues in gilding conservation across very different disciplines and will be an essential reference for conservators, curators, collection managers and other custodians of gilded objects.

The conference, 'Gilding: Approaches to Treatment', was a collaborative event organised by the Gilding Section of the United Kingdom Institute for Conservation of Historic and Artistic Works (UKIC) and English Heritage.

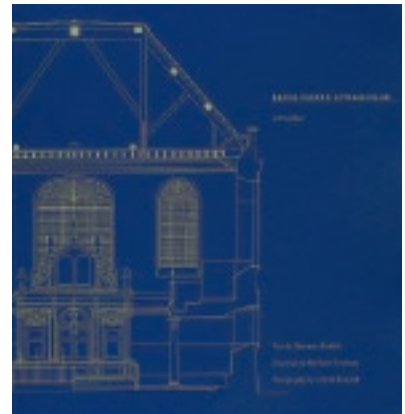
In association with James and James  
(Science Publishers) Ltd

PRICE £30 ISBN 1 85074 801 2  
PRODUCT CODE XE20061

## Bevis Marks Synagogue

### A short history of the building and an appreciation of its architecture

by Sharman Kadish



Bevis Marks in the City of London is the oldest synagogue in Great Britain and in 2001 celebrates its tercentenary. This booklet is published to coincide with that event and gives a brief outline of the history of the building and describes its architecture. The simple style of Bevis Marks shares features in common both with contemporary Wren churches in London and the larger nonconformist meeting-houses, but it bears a striking resemblance to the Spanish and Portuguese Great Synagogue of Amsterdam, the mother congregation. Bevis Marks remains much as it was when it first opened in 1701; hidden and dwarfed by modern high-rise office developments, the synagogue is actually very hard to find. This booklet, illustrated in colour and with detailed line drawings, will make this fascinating building better known.

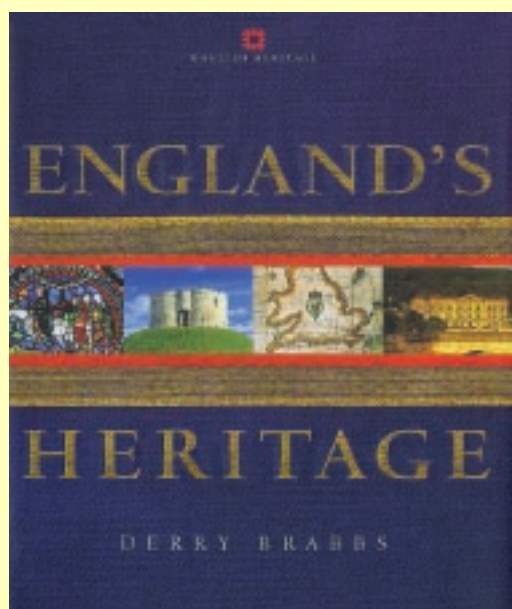
Published by English Heritage in association with the  
Survey of the Jewish Built Heritage in the United  
Kingdom and Ireland

PRICE £5 ISBN 1 873592 65 5  
PRODUCT CODE XE20066

# New general publications from English Heritage

## England's Heritage

by Derry Brabbs, with contributions from *English Heritage* by Val Horsler and David Miles



This imaginative exploration of England's heritage uses glorious photography of buildings and sites to draw out the major themes that have shaped England's history: invasion and conquest, education and religion, travel, trade and industry.

It looks at our rich genetic and cultural inheritance and investigates discovery through archaeology and re-enactment. Its aim is to bring England's history vividly to life through brilliant images and accessible text.

Published in association with Cassell

PRICE **£30** (highly illustrated, 416 pages)

ISBN **0304 355992**

PRODUCT CODE **XE20049**

## Heritage Hikes

South West Vol 1 and Yorkshire Vol 1

By Barrie Rouse

The first two regional volumes of guided walks in the English countryside which include English Heritage properties or sites. The Heritage Hikes series is ultimately intended to cover all English Heritage regions, offering a collection of beautiful, interesting and inspiring walks throughout the length and breadth of the country.

Each walk is circular, taking three to five hours to complete and giving ample time to visit English Heritage sites en-route, in winter or summer, along coastlines, through beautiful parkland and woodland, moorland and mountains.

The walks are designed to be easy to follow and suitable for experienced or novice walkers alike.

They all have legal access to land using public footpaths, bridleways and permissive paths. Directions use only permanent landmarks as reference points.

Each regional volume consists of six walk cards in an attractive folder. The cards measure 209 mm by 128mm so that they can be easily carried while walking, are waterproof and durable, and give information on parking, public transport and refreshment facilities as well as comprehensive walk directions.

In association with Glenwood Publications

South West Vol 1

PRICE **£7.95** ISBN **1 85074 798 9**

PRODUCT CODE **XE20050**

Yorkshire Vol 1

PRICE **£7.95** ISBN **1 85074 799 7**

PRODUCT CODE **XE20051**



Priced publications may be ordered from 15 October from English Heritage Postal Sales, Gillards, Trident Works, Marsh Lane, Temple Cloud, Bristol BS39 5AZ, Tel 01761 452 966 or at all times from [www.english-heritage.org.uk](http://www.english-heritage.org.uk)