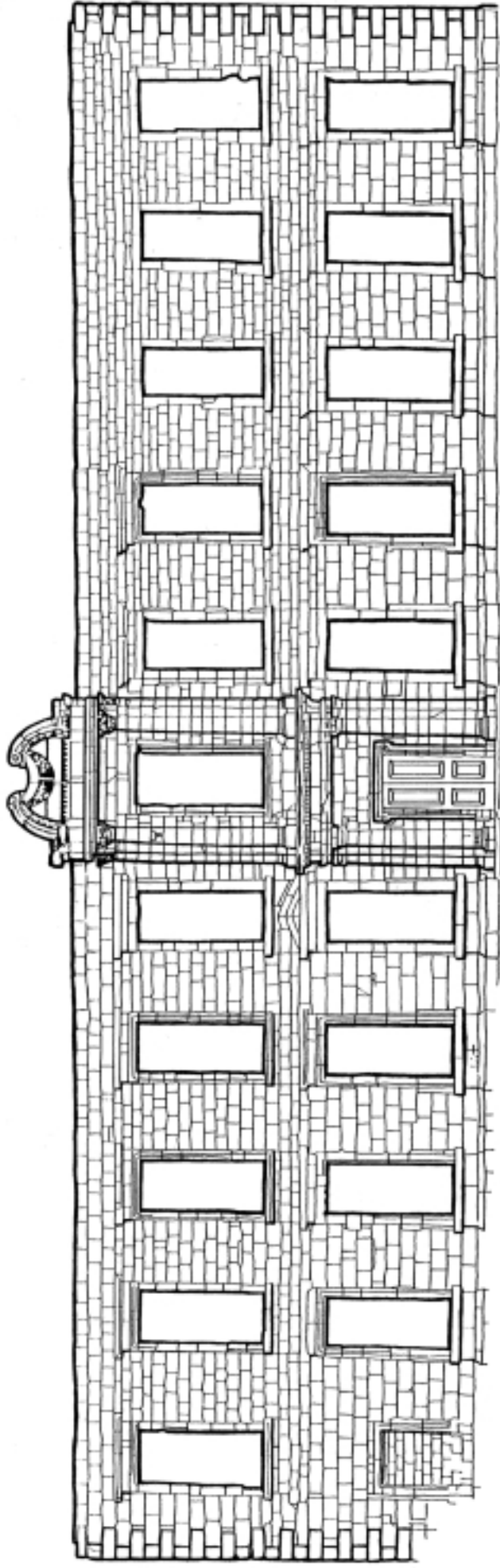


# Cholmley's House Resource Sheet

---



---

Sir Hugh Cholmley II built the house to live in and to impress his visitors. It was built in the latest style in 1672. The visitor centre was built inside the walls of the house, which was all that remained of it.

By using the line drawing and what you can see of the front of the visitor centre complete the drawing showing what the new house might have looked like in 1672.



## Cholmley's House

This series of activities investigates the facade and courts of seventeenth-century Cholmley's House using numeracy and art activities.

### Learning objectives

Pupils should learn to:

- observe and record the building
- survey and measure the courts
- use their observations and surveys to produce artwork and designs for specific purposes.

### Teaching activities

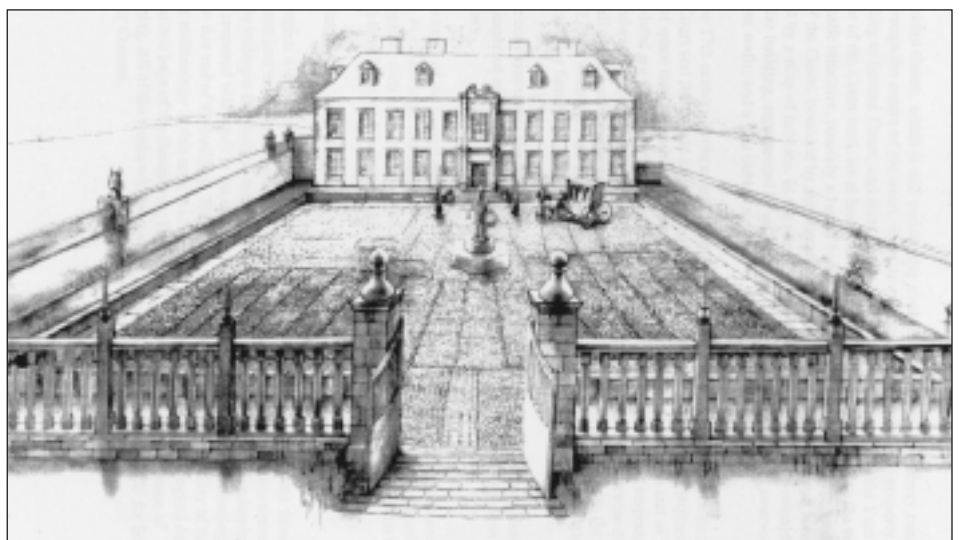
■ Ask pupils to use the line drawing on this resource sheet to draw the front of the house as it may have looked in 1672 when it was completed. The visitor centre has been built inside what remained of the walls of the house, which has been conserved rather than restored. Pupils can use the line drawing and the front of the visitor centre to produce an impression of what the house might have looked like when it was new. Pupils can compare their impression or reconstruction with the computer model produced for the exhibition, either in the exhibi-

tion or on the information panels at Whitby Abbey.

■ Pupils can produce a detailed plan of the courts using measuring tapes, trundle wheels or estimating using measured paces. Pupils can consider how the Cholmleys might have used the courts and design activities, based on these ideas, for visitors in this area. This can be developed further by asking pupils to design seating for visitors to the house in the twenty-first century that include the size, number and

positioning of the seats on a plan.

The centre of the court is thought to have had a statue of a Roman gladiator. Using the plan of the courts and the façade of the house pupils can design a modern sculpture for this important central position. Pupils need to take account of the scale of the sculpture. Follow-up work in the classroom can include refining designs for the sculpture and producing a 3D model in clay or papier-mâché.



*This artist's impression shows how Cholmley's house and inner court may have looked in the seventeenth century.*