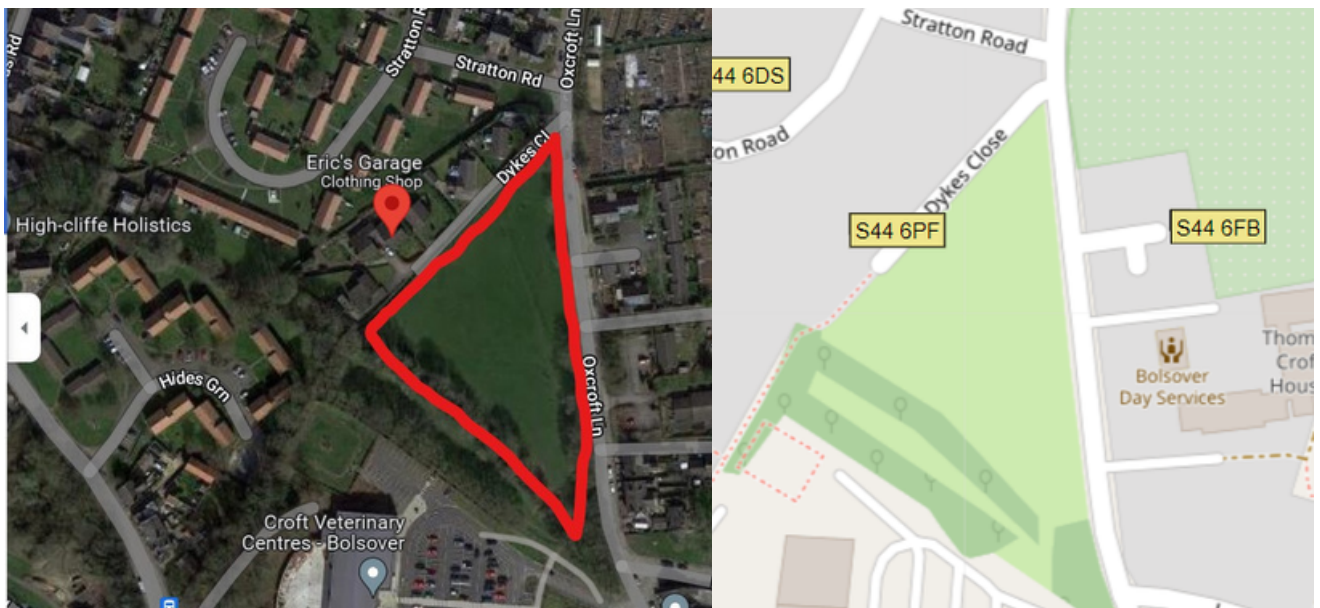
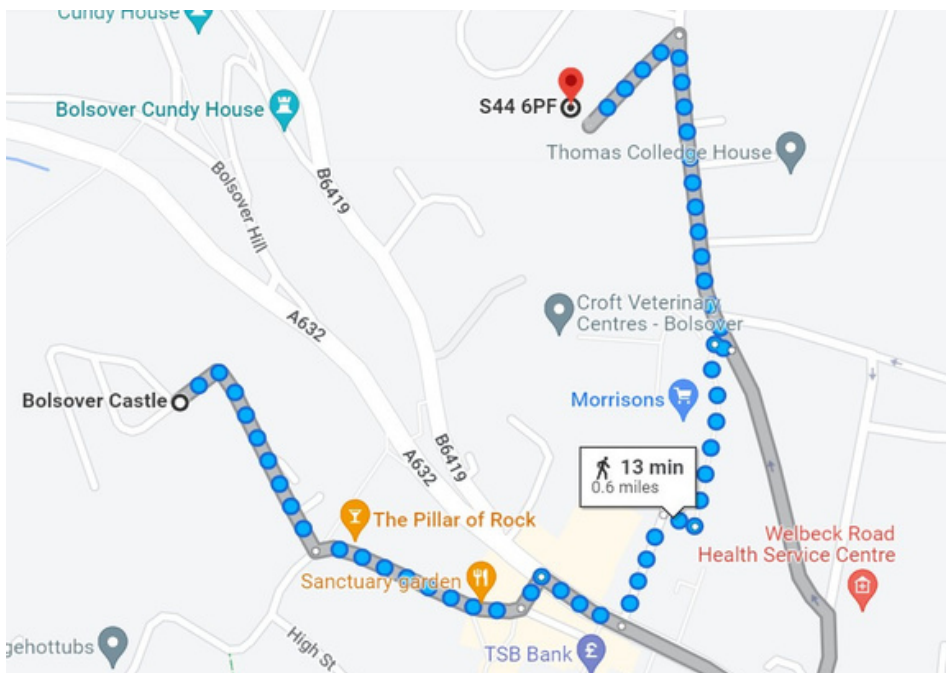


Overflow carpark highlighted below



Highlighted route from the overflow car park to Bolsover Castle with instructions



1. Walk north-east on Dykes Cl towards Oxcroft Ln
2. Turn right onto Oxcroft Ln
3. Turn right towards Callum Wy
4. Turn left towards Callum Wy
5. Turn right towards Callum Wy
6. Turn left onto Callum Wy
7. Turn right onto Town End/A632
8. Turn left onto Castle St/Market Pl
9. Continue to follow Castle St
10. Continue straight to stay on Castle St
11. Turn right and Bolsover Castle will be on your left

You can find these instructions and the map on Google Maps. Simply put in directions for S44 6PF to Bolsover Castle or use the following link: bit.ly/bolsover-castle-over-flow