



ENGLISH HERITAGE

Landscape Advice Note: Garden Archaeology Reports



www.english-heritage.org.uk/professional/advice/advice-by-topic/parks-and-gardens/

This Landscape Advice Note lists English Heritage and the Royal Commission of Historic Monuments in England (RCHME) garden archaeology investigation and other related reports. The aim of the leaflet is to highlight the range of garden archaeology studies.

INTRODUCTION

The study of gardens through archaeology has allowed us to better understand the designed landscapes of bygone historical periods. Details revealed through garden archaeology can inform garden conservation and aid restoration.

Garden archaeology spans a range of disciplines from field walking, aerial photography, geophysical survey and remote sensing technology such as lidar (see page 7) to excavation and study of environmental archaeological evidence.

Garden archaeology continues to advance. As well as the English Heritage investigations, garden archaeology programmes and projects are also run by universities, historical and archaeological societies, and individual historic properties. Universities also offer courses covering garden archaeology.

GENERAL REFERENCES

Bowden, Mark 1999 *Unravelling the Landscape: an Inquisitive Approach to Archaeology* London: English Heritage

Currie, Chris 2005 *Garden Archaeology: A Handbook* York: Council for British Archaeology

Harvey, J 1982 'Medieval Gardens' in *Medieval Archaeology* **26**, 243 London: Maney Publishing

English Heritage 2011 *Environment Archaeology Guidance* English Heritage Product Code: 51644
www.english-heritage.org.uk/professional/advice/advice-by-topic/heritage-science/archaeological-science/environmental-archaeology/

English Heritage 2007 *Understanding the Archaeology of Landscapes: a guide to good recording practice* Swindon: English Heritage

www.english-heritage.org.uk/publications/understanding-archaeology-of-landscapes/

English Heritage 2010 *The Light Fantastic. Using airborne lidar in archaeological survey*
www.english-heritage.org.uk/publications/light-fantastic/

Everson, Paul and Williamson, Tom 1998 'Gardens and Designed Landscapes' in *The Archaeology of Landscape* Manchester: Manchester University Press

Hazell, Z and Robinson, DE 2011 *Moats, Ponds and Ornamental Lakes in the Historic Environment* London: English Heritage Product Code: 51687

ICOMOS-UK 1999 *Guidelines on Archaeology in the Management of Gardens, Parks and Estates* London: ICOMOS-UK

Jacques, David 1997 'The Progress of Garden Archaeology' in *Journal of Garden History* London: Taylor & Francis

Taylor, Christopher 1991 'Garden archaeology: an Introduction' in *Garden Archaeology* York: Council for British Archaeology

Taylor, Christopher 1998 'From record to recognition: the discovery and understanding of the remains of parks and gardens' in *There by Design* (ed. Pattison, P) British Archaeological Reports British Series 267 1-6 Oxford: BAR

Taylor, Christopher 1983 *The Archaeology of Gardens* Princes Risborough: Shire Publications

Taylor, Christopher 1997 'The place of analytical fieldwork in garden archaeology' in *Journal of Garden History* **17** (1), 18-25 London: Garden History Society

Taylor, Christopher 2000 'Medieval Ornamental Landscapes' *Landscapes*, **1**(1), 38-55

COVER IMAGE:

The late 16th to early 17th century garden at Kirby Hall (Northamptonshire) was re-excavated in the late 1980s. © English Heritage

01



02



IMAGES 01 AND 02:

A garden or garden area may have many layers of design developments. The early 19C Gilpin parterre at Audley End (Essex) was restored following archaeological investigation in the late 1980s.
© English Heritage Photo Library.

USEFUL WEBSITES

research.english-heritage.org.uk/

A searchable database of English Heritage's research reports, covering all aspects of archaeological survey, excavation or scientific work undertaken.

www.english-heritage.org.uk/professional/research/archaeology/

Briefing on English Heritage's archaeological research work, aerial survey, projects and archives. English Heritage also publishes an e-magazine on applied research undertaken as part of the National Heritage Protection Plan (see below).

www.english-heritage.org.uk/professional/research/heritage-science

Information on English Heritage's heritage science research including environmental archaeology, dating and geophysics.

www.english-heritage.org.uk/national-heritage-protection-plan

The National Heritage Protection Plan maps out priorities for protection and research.

www.englishheritagearchives.org.uk/

English Heritage's archive of photographs, plans and drawings.

sdb2.eng-h.gov.uk/replist.html

A searchable list of geophysical reports from 1986 onwards carried out by the Ancient Monuments Laboratory. Full reports and synopses are provided.

oasis.ac.uk

University of York's Online Access to the Index of Archaeological Investigations (OASIS) searchable database of archaeological investigations undertaken in both England and Scotland.

archaeologydataservice.ac.uk

Archaeology Data Service (ADS) website includes a searchable database of archaeological records in England.

www.gardenhistorysociety.org

The Garden History Society promotes the study of the history of gardening, landscape gardening and horticulture in all its aspects. It publishes the 'Garden History journal' and maintains a bibliographical and research database.

www.parksandgardens.org

An online resource for historic parks and gardens information.

ENGLISH HERITAGE AND RCHME GARDEN ARCHAEOLOGY REPORTS, AND REPORTS RELATING TO ENGLISH HERITAGE HISTORIC PROPERTIES

MEDIEVAL

Alexander, Magnus and Millward, Jonathon 82/2008 *Codnor castle, Derbyshire: Earthwork Analysis*

Barker Jo, Keir, Wes, McOmish, David, Newsome, Sarah and Shotliff, Drew 2007 *Stratton Park, Bedfordshire: Survey and Archaeological Investigation of Moated Enclosures within a designed landscape*

Blood, Keith and Taylor, Christopher 1991 'Cawood: an Archiepiscopal Landscape' in *Yorkshire Archaeology Journal* 64, 83-102 London: Maney Publishing

Bowden, Mark 2006 AI/20/2005 *Hopton Castle, Shropshire: Archaeological Investigation of Site*

Brown, Graham 29/2006 *Hailes Abbey, Glos. Analytical Earthwork Survey*

Brown, Graham AI/2/2005 *Settlement earthworks at Lamport, Buckinghamshire*

Brown, Graham 2006 *Hailes Abbey: Geophysical Survey of site including possible Later Designed Landscape*

Busby, Peter and Wilmott, Tony 1997 and 1998 *Whitby Abbey: SAM no. 13284: A project design for the Evaluation of the Formal Gardens within the inward and outward Courts of Abbey House*

Busby, Peter and Wilmott, Tony 1998 *A Project Design for the Evaluation of Gardens within Parlour Yard (Whitby Abbey)*

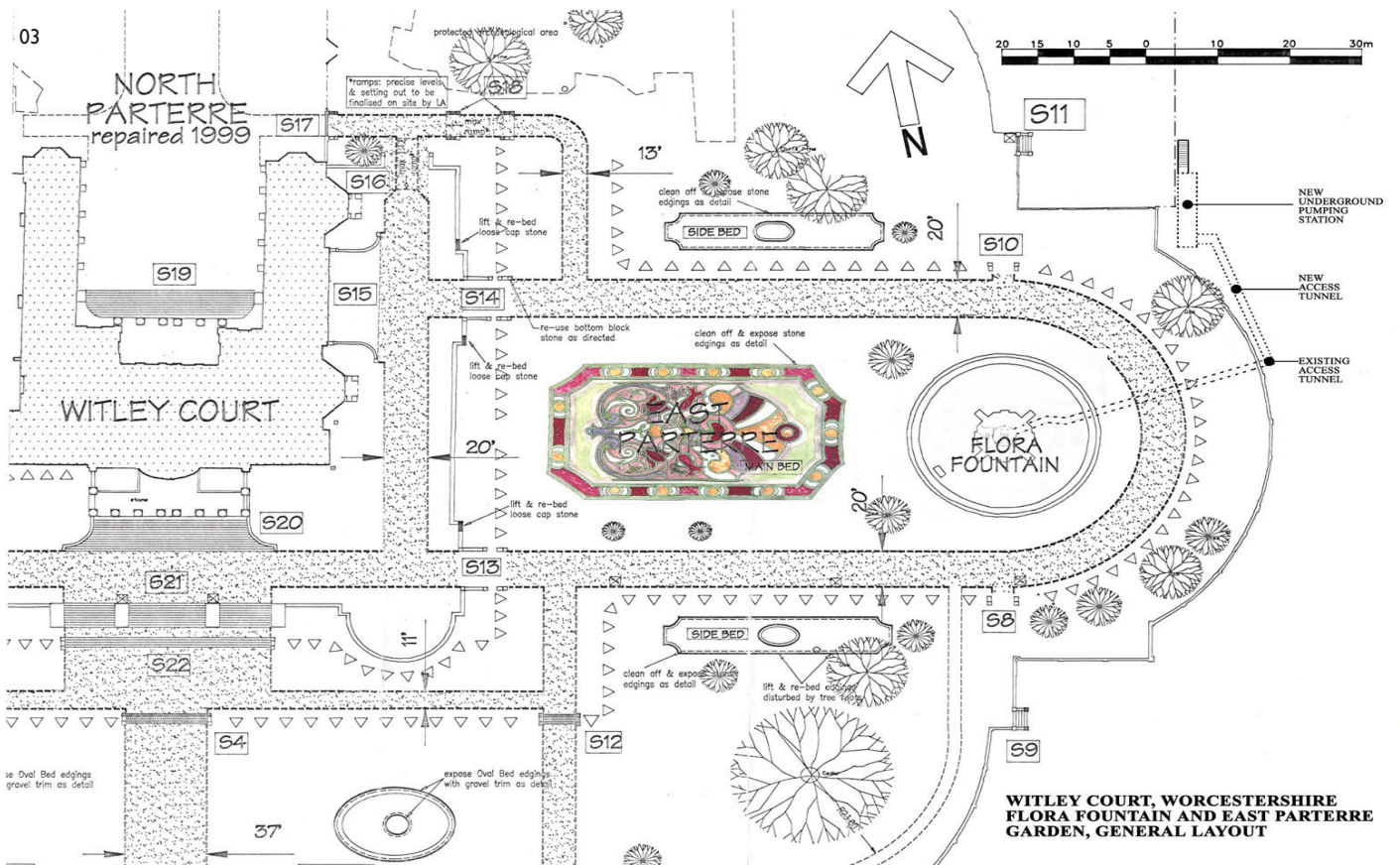
Canti, Matt, Leary, Jim, Martin, Louise, Newsome, Sarah and Pattison, Paul 52/2008 *Ashby de la Zouch Castle, Leicestershire: A Multi-Disciplinary Investigation of the Castle Garden*

Ellis, Peter 1992 *Ludgershall Castle: a report led by Conservation Consultancy June 1992*

Gregory, D and Edgeworth, M 54/2012 *Sundon Park, Lower Sundon, Bedfordshire: Archaeological Desk-Based Assessment*

Linford N 5/1998 *Old Wardour Castle, Wiltshire, Report on Geophysical Survey 1997*

Jamieson, Elaine and Lane, Rebecca 2013 'The Pleasance, Kenilworth: a royal residence and pleasure garden' *Research News* 19, 26-29 ISSN 1750-2446,



IMAGES 03 AND 04:

The East Parterre at Witley Court (Worcestershire) was restored in 2011. Archaeological investigation helped determine the detail of the Nesfield design. © English Heritage Photo Library

Linford, NT 44/1993 *Report on the geophysical survey at Reigate Priory, Surrey June 1993* Unpublished AML Report Series

Linford, N 2/1997 *Hamstead Marshall, Berkshire, Report on Geophysical Surveys. 1996*

Martin, Louise 2007 *Carisbrooke Castle Privy Garden: Plant Remains from Evaluation and Excavation*

Payne, A 55/2000 *Bishop's Palace Garden, Peterborough Cathedral, Cambridgeshire Report on Resistivity Survey. September 1996*

Payne, A 123/93 *Cawood Castle Garth, N Yorks Report on Geophysical Survey. March 1993*

Payne, A 100/90 *Bury St Edmunds Abbey, Suffolk: Resistivity Survey. March 1990*

TUDOR

Barker, Louise and Pattison, Paul AI/15/2005 *Cobham Hall, Kent: The North Pleasure Grounds*

Barker, Louise and Pattison, Paul AI/2/2003 *Cobham Hall, Kent: Lady Darnley's Garden and the South Garden*

Bowden, Mark AI/21/2002 *Greys Court, Rotherfield Greys, Oxon: Level 1 Archaeological Survey*

Brown, Graham AI/3/2005 *The Elizabethan Garden at Kenilworth Castle*

Brown, G, Jamieson, E and Jones BV 94/2009 *Croxden Abbey, Staffordshire: Croxon Abbey and its Environs*

Field, Dave 72/2006 *Barrington Court, Ilminster, Somerset: Analytical Survey and Investigation Report of Earthworks*

Harmer, Vicky 1999 *Portland Castle: Contemporary Heritage Gardens Scheme: Archaeological Desk-Based Assessment*

Keay, Anna and Watkins, John (editors) 2013 *The Elizabethan Gardens at Kenilworth Castle Swindon: English Heritage*

Linford, N and Martin, L 29/2005 *Kenilworth Castle, Warwickshire, Report on Geophysical Surveys, June and July 2004*

STUART

AI/4/2005 *Apethorpe Hall, Northants: a landscape assessment*

46/2011 *Audley End House, Essex – Landscape: Investigation Report*

Bowden, Mark 1992 *Report into the Old Durham Gardens Co. Durham NMR Archive Collection no. 827407*

Bowden, Mark and Everson, Paul AI/5/2003 *Wyeford Farm, Pamber, Hants. Level 2 Archaeological Survey*

Bowden, Mark and Rardin, Anya 93/2007 *Ascott Park, Stadhampton, Oxfordshire: Analytical Earthwork Survey of a 17th Century Park and Garden*

Bowden, Mark, Jones, Barry and Grady, Damien 2008 *'Ascott Park, Oxfordshire' Research News 9, 25 ISSN 1750-2446*

Everson, Paul AI/7/2005 *Lewes Priory, Sussex: the post-Dissolution mansion and gardens of Lords Place*

Goodall, John, Oswald, Alistair and Sutcliffe, Tara-Jane 100/2010 *Thornton Abbey, Lincolnshire: Archaeological Survey revealing a period of unfinished designed landscape*

Linford, NT 38/1992 *Report on the geophysical survey at Kirby Hall, July 1991* Unpublished AML Report Series

Linford, P K 115/93 *Bolsover Castle, Bolsover, Derbyshire; Report on Geophysical Survey, 1993*

Payne, AW, Oswald, A, Goodall, J, Sutcliffe, TJ 100/2010 *Thornton Abbey, North Lincolnshire: Historical, Archaeological and Architectural Investigations*

Smith, Nicky 2002 AI/39/2002 *Dyrham Park, South Gloucestershire*

Smith, Nicky AI/21/2005 *Lodge Park, Glos.*

Wilson-North, Robert 1996 *Low Ham, Somerset: Relict Gardens of the 17th Century and the development of the landscape*

GEORGIAN

Barker, Louise and Pattison, Paul AI/15/2003 *Wimpole Park, Cambridgeshire: medieval settlement, post-medieval park and gardens*

Bowden, Mark 1990 *Report on the Steel Cementation Furnace at Derwentcote Co. Durham. NMR Archive Collection no. 821963*

Bridge, Martin 92/2010 *Chiswick House Gardens, Burlington Lane, Chiswick, London Borough of Hounslow: Tree-Ring Analysis of Yew Stumps*

Fellows, David 4/2006 *Chiswick House Facilities Development Project*

Fellows, David 52/2007 *Chiswick House, London Borough of Hounslow: Report on the Archaeological Evaluation Trench in the Camellia Garden*

Hunt, Abby 2006 *Beningbrough Hall North Yorks. An Archaeological Survey and Investigation of the Post-Medieval Deer Park and gardens*

Jamieson, Elaine AI/21/2003 *Fyne Court, Broomfield, Somerset: an 18th Century Landscape Park*

Linford, Neil 28/2011 *Wrest Park, Silsoe, Bedfordshire: Report on the Geophysical Survey, July 2010*

Lord, John AI/27/2003 *Lydiard Park, Swindon, Wiltshire*

McOmish, David, Tuck, Cathy and Went, David AI/17/2001 *West Wycombe Park, Buckinghamshire*

Menuge, Adam and Oswald, Alistair AI/10/1999 *Rayne Hall, Braintree, Essex*

Riley, Hazel AI/21/2001 *Stowe Park, Buckinghamshire*

Rodwell, Warwick 1991 *Coombe Abbey, Coventry Warwickshire; an Archaeologists assessment of the Buildings, Gardens and Parks*

Smith, Pete 73/2011 *The 'Umbrello', Great Saxham Hall, Suffolk: Recording and Analysis*

RCHME, 1996 *Horseheath Hall, Cambridgeshire: an earthwork survey*

RCHME, 1998 *A survey of the garden earthworks at Hall Barn, Beaconsfield, Buckinghamshire*

VICTORIAN

Barrett, Nathalie AI/11/2004 *Bletchley Park, Buckinghamshire: the Park and Gardens*

Brown, Annabel, Martin, Louise, Pattison, Paul and Russell, Michael 2008 'The 'Privy Garden' at Carisbrooke Castle reveals its secrets' *Research News* 9, 14-17 ISSN 1750-2446

Davies, T and Weaver, S 2004 *Parterre Gardens, Witley Court, Great Witley, Worcestershire Oxford: Oxford Archaeology*

Dix, Brian 2011 'Barbarous in its magnificence' Restoration of W.A. Nesfield's parterre-design for the East Garden at Witley Court, Worcestershire' *Journal of Garden History* 39(1) London: Garden History Society

Goodall, Ian and Hunt, Abby 2002 *Basingill Gunpowder Works and Garden, Cumbria: an Archaeological and Architectural survey*

MODERN

Newman, Phillip 2001 *Battery Gardens Brixham: an Archaeological Survey by English Heritage*



IMAGE 05:

The lidar image of Wrest Park (Bedfordshire) shows surviving features such as the long water and also details like lost paths. © English Heritage

Airborne lidar (light detection and ranging) provides highly detailed and accurate models of the land surface. English Heritage's *Light Fantastic* publication provides advice on using lidar for archaeological survey.

ENGLISH HERITAGE OFFICES

North East
Bessie Surtees House
41-44 Sandhill
Newcastle Upon Tyne
NE1 3JF
Tel: 01912 691200
e-mail: northeast@english-heritage.org.uk

North West
Suites 3.3 and 3.4
Canada House
3 Chepstow Street
Manchester
M1 5FW
Tel: 01612 421400
e-mail: northwest@english-heritage.org.uk

Yorkshire and the
Humber
37 Tanner Row
York
YO1 6WP
Tel: 01904 601901
e-mail: yorkshire@english-heritage.org.uk

West Midlands
The Axis
10 Holliday Street
Birmingham
B1 1TG
Tel: 01216 256820
e-mail: westmidlands@english-heritage.org.uk

East Midlands
44 Derngate
Northampton
NN1 1UH
Tel: 01604 735400
e-mail: eastmidlands@english-heritage.org.uk

East of England
Brooklands
24 Brooklands Avenue
Cambridge
CB2 2BU
Tel: 01223 582700
e-mail: eastofengland@english-heritage.org.uk

London
1 Waterhouse Square
138-142 Holborn
London
EC1N 2ST
Tel: 02079 733000
e-mail: london@english-heritage.org.uk

South East
Eastgate Court
195-205 High Street
Guildford
GU1 3EH
Tel: 01483 252000
e-mail: southeast@english-heritage.org.uk

South West
29 Queen Square
Bristol
BS1 4ND
Tel: 01179 750700
e-mail: southwest@english-heritage.org.uk

National Office
The Engine House
Firefly Avenue
Swindon
SN2 2EH
Tel: 01793 414700
e-mail: customers@english-heritage.org.uk

English Heritage is the Government's adviser on the historic environment with responsibility for all aspects of protecting and promoting the historic environment in England.

The role of English Heritage's Curatorial Department is to help everyone to be inspired and engaged by the Story of England through sites, artefacts and archives.

This guidance has been written and compiled by Felix Mayle (Curatorial Department) with advice from Jenifer White (Curatorial Department), Paul Stamper (Designation Department), Christopher Taylor and David Jacques.

Published by English Heritage September 2013
Product Code: 51828

www.english-heritage.org.uk

Please do not print this document
unless you really need to.



If you would like this document in a different format, please contact our customer services department on telephone: 0870 333 1181
fax: 01793 414926 textphone: 01793 414878
email: customers@english-heritage.org.uk



ENGLISH HERITAGE