



ENGLISH HERITAGE



# SUMMER EXPLORER QUEST



Congratulations on completing the Summer Quest  
We hereby certify that

is now an official explorer!



ENGLISH HERITAGE

# SUMMER EXPLORER QUEST



Welcome to the Summer Explorer Quest at Wrest Park. On your visit today look out for question boards and clues. Please be aware of other explorer's and remember to not let anyone see your answers too closely! Good Luck!!

➤ Check off the animals you see on your visit to Wrest Park today;

Goose

Butterfly

Bee

Swan

Heron

Pheasant

Magpie

Duck

➤ Did you see any other insects or animals?

➤ Bees live in a ... \_\_\_\_\_

➤ Can you find the building that is hidden in the trees by the dairy? That is where you will find your next question.

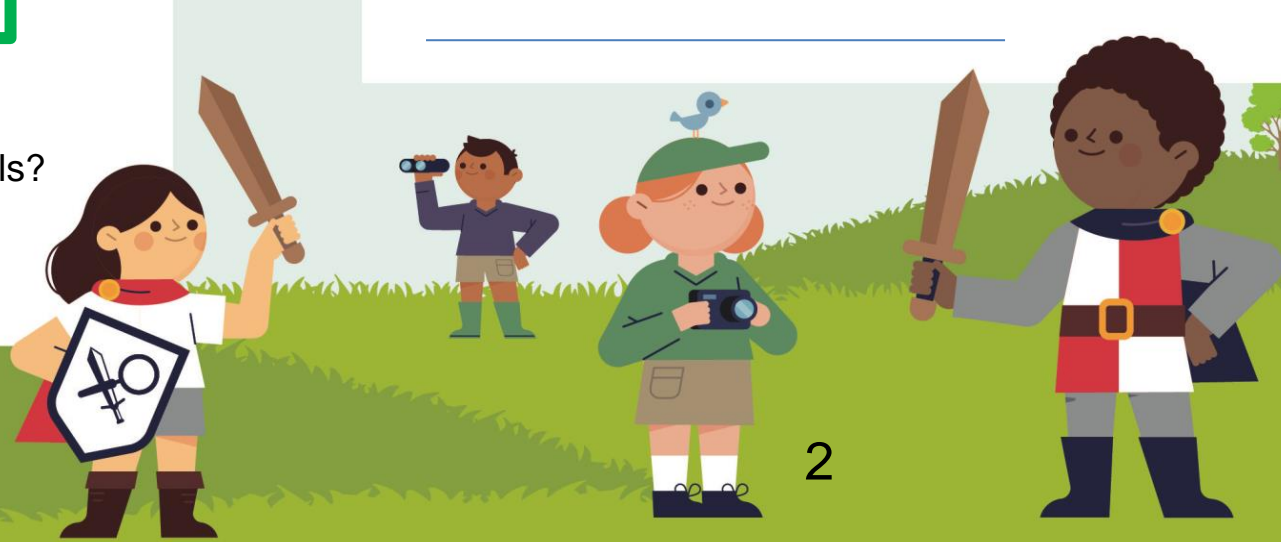
\_\_\_\_\_

➤ Head to the building opposite the fountain to find a clue to solve the anagram below.

**YARGERON** \_\_\_\_\_

➤ Now head to the Bowling Green. How many statues did you find today?

\_\_\_\_\_



- Use the space below to design your own statue for Wrest Park.



- How many Dragonflies did you find along the long water?  
\_\_\_\_\_

- Head across into the trees. Can you find the building that looks like it comes from China? This is where your next question is.  
\_\_\_\_\_

- Head to the bridge to find out what tree this leaf comes from.



3



4

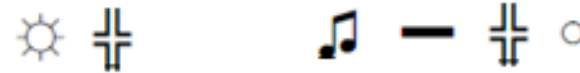
➤ What name do we give people who lived in the 18th Century? Head to the Pavilion for a clue.

➤ Can you find this building? Your next board is located here.



➤ What is a Wyvern? See if you can find the board up near the mansion for a clue!

➤ Can you find the final board among the flowers to crack this code?



6

