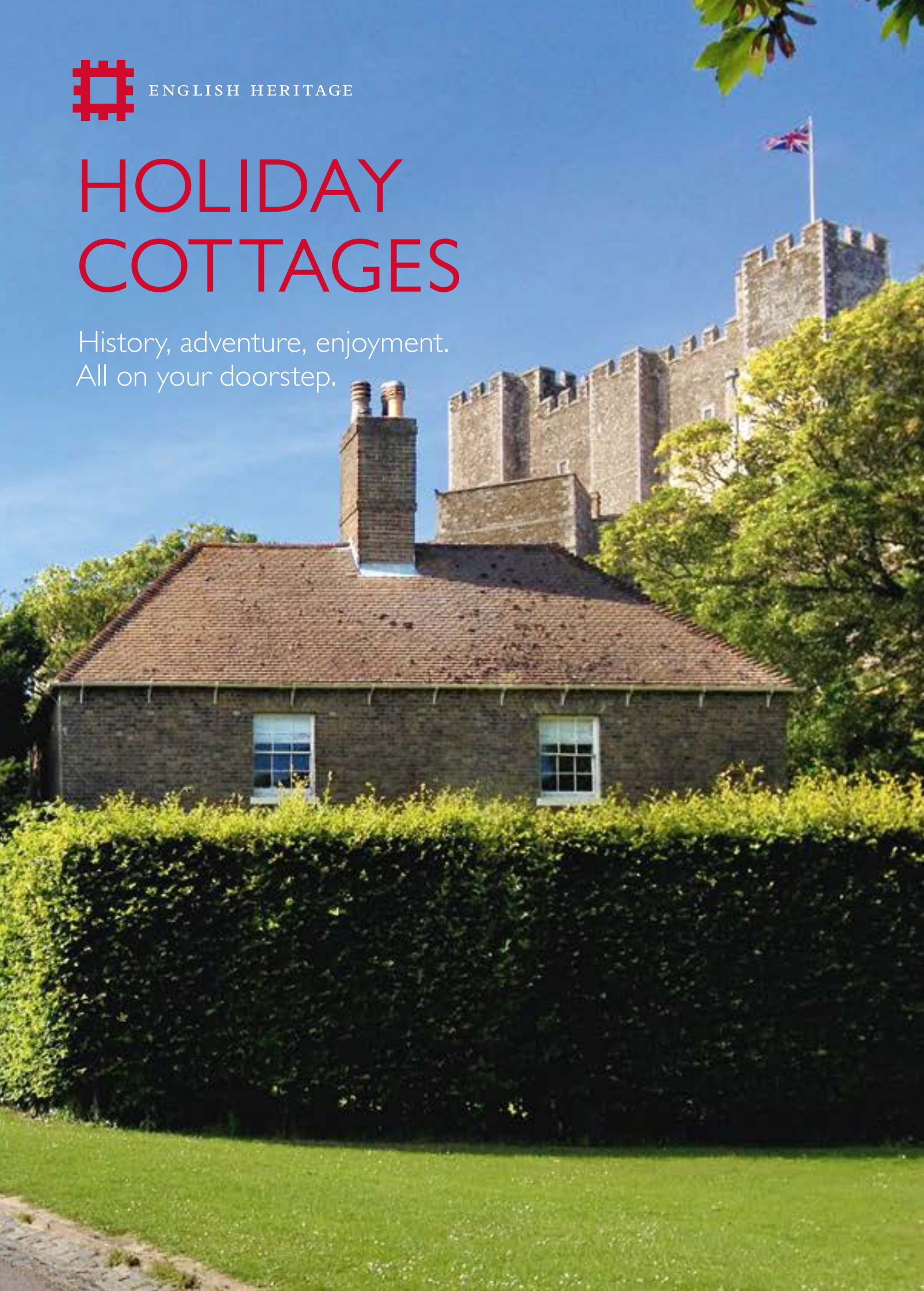


ENGLISH HERITAGE

HOLIDAY COTTAGES

History, adventure, enjoyment.
All on your doorstep.



WEST OF ENGLAND

A	PENDENNIS CASTLE	
	Callie's Cottage	6
	The Custodian's House	8
B	ST MAWES CASTLE	
	Fort House	10
C	WITLEY COURT & GARDENS	
	Pool House	12

SOUTH OF ENGLAND

D	CARISBROOKE CASTLE	
	The Bowling Green Apartment	16
E	OSBORNE	
	Pavilion Cottage	18
	No 1 Sovereign's Gate	20
	No 2 Sovereign's Gate	22
F	BATTLE ABBEY	
	South Lodge	24
G	DOVER CASTLE	
	The Sergeant Major's House	26
	Peverell's Tower	28
H	WALMER CASTLE & GARDENS	
	Garden Cottage	30
	The Greenhouse Apartment	32

EAST OF ENGLAND

I	AUDLEY END HOUSE & GARDENS	
	Cambridge Lodge	36

EAST MIDLANDS

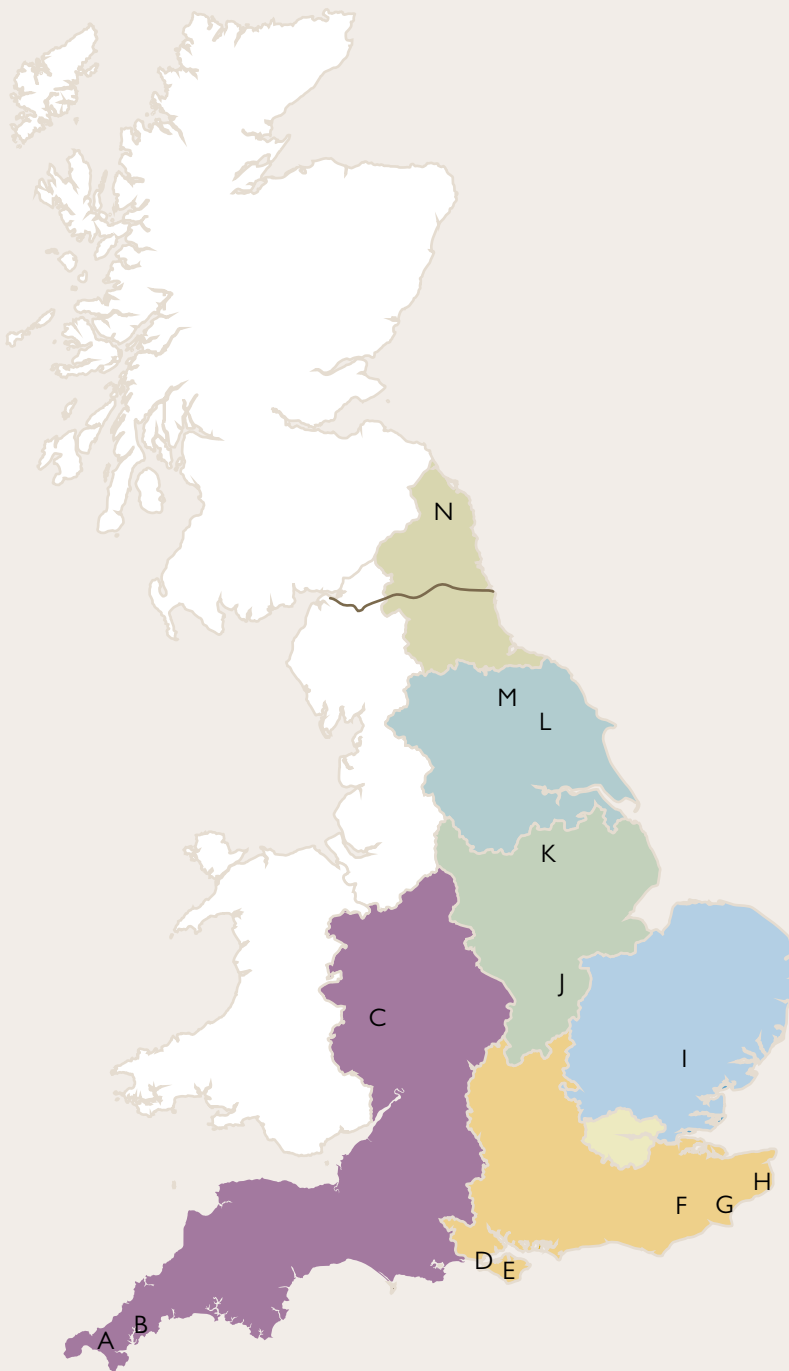
J	KIRBY HALL	
	Peacock Cottage	40
K	HARDWICK OLD HALL	
	East Lodge	42

NORTH YORKSHIRE

L	RIEVAULX ABBEY	
	Refectory Cottage	46
M	MOUNT GRACE PRIORY, HOUSE AND GARDENS	
	Prior's Lodge	48

NORTHUMBERLAND

N	LINDISFARNE PRIORY	
	Coastguard's Cottage	52



SYMBOL GUIDE

COTTAGES

	Dogs (max 2 well-behaved)
	Travel Cot/Highchair
	Barbeque
	Wood Burner
	Wi-Fi

PROPERTY FACILITIES

	Events
	Tearoom
	Shop
	Children's Play Area
	Wheelchair Access

NEARBY

	Pub
	Coast
	Shops
	Train Station

Join us on social media

englishheritageholidaycottages @EnglishHeritage

All cottages are equipped with TV/DVD, washer/tumble dryer, dishwasher and microwave.

Welcome

From coast to countryside, north to south, our holiday cottages give you the chance to enjoy a break in the heart of some of the country's most remarkable locations. With unique stories and settings, each cottage opens a window to the past and makes a great base for a memorable holiday with family and friends.

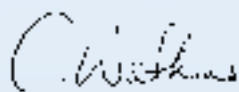
We hope this brochure gives you all the inspiration and information you need to get planning. Whether you want to see sunrise over a castle keep or explore a royal retreat after dark, cosy in by the fire or head out on a hike, you'll find a cottage to match your holiday plans.

As ever, we've been working to improve every angle of your stay with us – starting with the cottages themselves. We've been painting inside and out, putting in new furniture, and, at the Pool House in Witley Court, fencing in the garden to make it easier for your four-legged friends to join too. On the Holy Island of Lindisfarne we've improved accessibility within the ruins so wheelchairs, pushchairs and mobility scooters will be able to get around the entire site much more easily.

We're excited to show you what's new within our historic places too. Highlights include the recently opened Lower Terrace at Osborne and the transformed grounds of Mount Grace Priory, House and Gardens, which open in April 2018. Explore these gardens as part of your stay with us and enjoy a bright and beautiful face of the past.

If you're planning a trip to the south coast, please note we'll be closing our cottages at Walmer Castle at some point in 2018 as we start a project to rediscover the pleasure gardens there. Please keep an eye on our website and social media channels for the most up-to-date information.

We look forward to welcoming you to our cottages. We hope you enjoy staying with us, knowing that your support is helping to care for these historic places and keep the story of England alive for future generations.



Clare Watkins
National Holidays Manager



YOUR STAY



As part of your stay with us, you'll be able to make the most of our historic properties and enjoy a hands-on experience of the past. Whether that's by climbing ramparts, dressing up as characters from another age, stepping into an ocean lookout point or tasting a traditional recipe.

Our properties are packed full of discoveries and as a holiday cottage guest you can explore the grounds, investigate nooks and crannies and enjoy the atmosphere all by yourself. Putting you in touching distance of some of the most famous names in English history – from William the Conqueror to Queen Victoria – staying with us is sure to keep all your group inspired and entertained.

7 REASONS TO HOLIDAY WITH US

1 COMPLIMENTARY ENTRY

There are over 400 sites across the country available for you to visit free of charge whilst staying in our cottages. Make the most of your holiday and delve deeper into England's past.



2 OUT OF HOURS ACCESS

One of the great benefits of a stay in our cottages is that you have exclusive access to the grounds once the public have gone home. What's better than to have Rievaulx Abbey to yourself to sit and think or to stroll around the parade ground at Pendennis Castle as the sun comes up.

3 ORIENTATION TOUR

Our teams on the ground will show you around the property during your holiday so that you can gain an added insight into the buildings and their collections.

4 PRIORITY ACCESS TO EVENTS

We have events for all ages and interests across the country. From Easter adventure quests to summertime jousts and Victorian Christmas celebrations, our year-round events will add another dimension to your holiday.



As a guest you can enjoy these on a reduced charge or complimentary basis. Take the chance to see how our events are set up and watch our re-enactors prepare for the day. Inspire the children with some hands-on fun or experience a thrilling medieval spectacle at one of our jousts or knights' tournaments across the country. On each of the cottage pages we have given you an idea of some of our events that you can attend whilst on holiday. Please check what's going on during your stay at www.english-heritage.org.uk/events

10% TEAROOM DISCOUNT

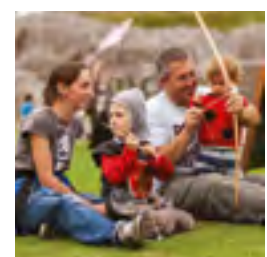
With 26 tearooms, cafés and restaurants across the country, benefit from a 10% discount as a holiday cottage guest and enjoy our delicious locally-sourced food and drink freshly cooked or prepared on site wherever possible.

10% GIFT SHOP DISCOUNT

Whether you're looking for gifts inspired by history, a souvenir to remind you of your stay or a tasty treat from our food and drink collection, you'll benefit from a 10% discount while on holiday. We'll extend your 10% online discount for a month after your stay so that you have the opportunity to take home your favourite finds if you missed them in our 103 shops.

ROOM FOR EVERYONE

Osborne, Walmer Castle and Gardens, Pendennis Castle and Dover Castle are ideal if you want your own space yet are travelling with others as you can stay in more than one cottage on the site. We will offer you a 10% discount if you book more than one cottage over a single period.

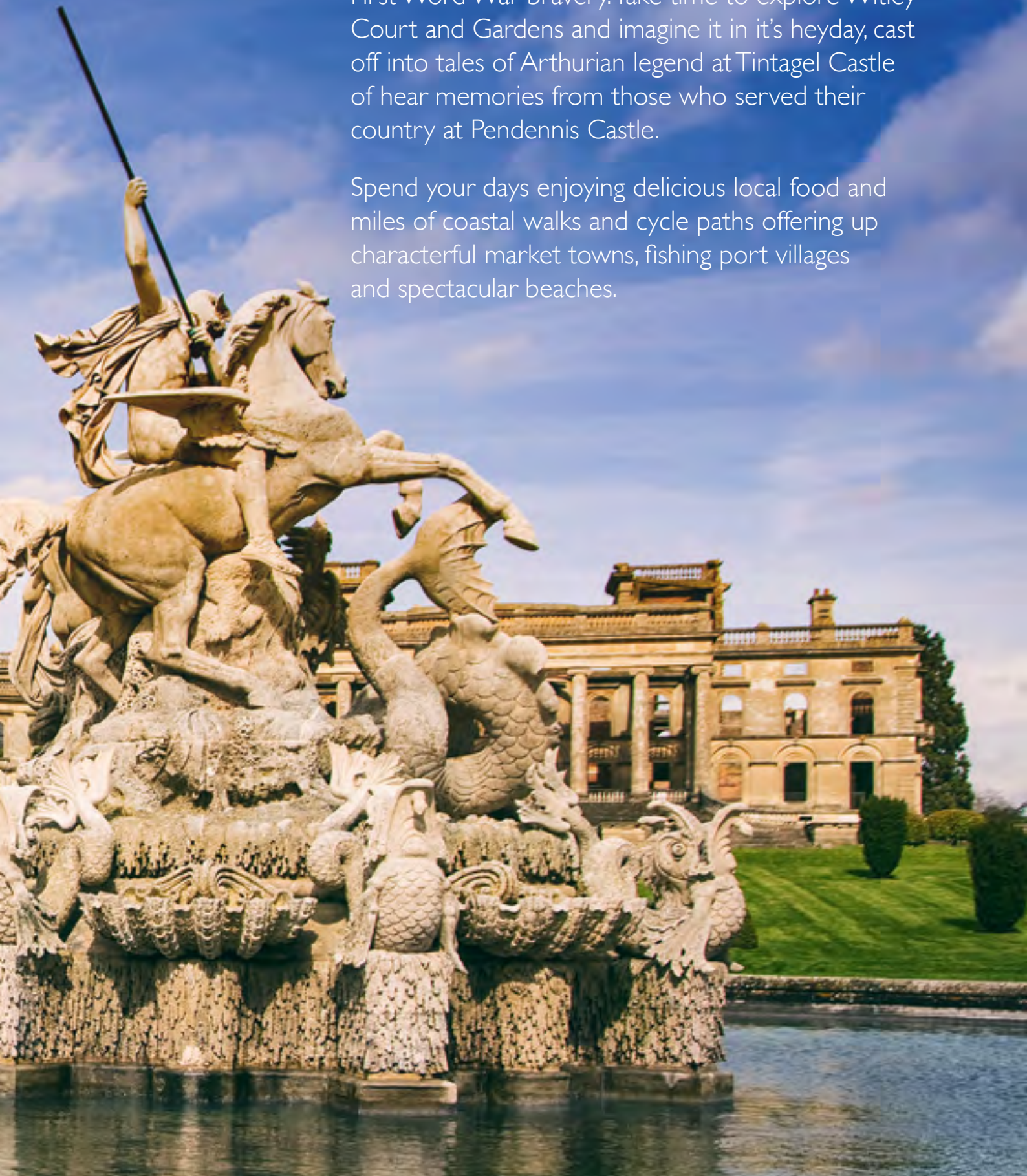


WEST OF ENGLAND



Head to the West of England and discover gently rolling countryside rooted in thousands of years of history. Fringed by a rugged coastline crowned with castles, the region opens up a holiday that's packed with intriguing discoveries of prehistoric life, medieval legend and First World War bravery. Take time to explore Witley Court and Gardens and imagine it in its heyday, cast off into tales of Arthurian legend at Tintagel Castle or hear memories from those who served their country at Pendennis Castle.

Spend your days enjoying delicious local food and miles of coastal walks and cycle paths offering up characterful market towns, fishing port villages and spectacular beaches.





Enjoy captivating views of the rugged shoreline and one of Henry VIII's finest coastal fortresses.



CALLIE'S COTTAGE

Built in the early 1900s and named after the castle's long-serving operations manager, this former Sergeant's Mess has been stylishly converted into a two bedroomed holiday cottage.

Pendennis Castle brings all the drama of coastal defence to life. Uncover the role it played in the major conflicts of the past 450 years, including being one of the last royalist strongholds in the Civil War. In the summer, the firing of the noonday gun serves as a reminder of the troops who left Falmouth to support the D-Day landings in the Second World War.

During your stay, take advantage of your priority access to many of the events taking place on the castle's lawns. From medieval jousts to defending the castle from dastardly pirates, the whole family can get involved.

Take a short walk into historic Falmouth and discover its harbour with seafood sellers, craft shops, restaurants and bars. Alternatively, enjoy one of the four sandy beaches on this Cornish coastline.

PRICES	From	To
3 nights	£350	£940
4 nights	£355	£990
7 nights	£665	£1,770

For full details and our special offers, visit our website or call a member of our reservations team.

NEW FOR 2018

New for 2018 is cutting-edge interactive interpretation bringing new life to the castle's story. In the Tudor gun tower, life-sized projected figures and animations let you witness how 16th-century artillerymen reacted to the sudden appearance of enemy ships. In the Half Moon Battery, travel back to another crisis in Pendennis's history, the Second World War.

Experience an air-raid, and watch out for enemy aircraft. Pendennis' guns from the Tudor, to Second World War will demonstrate how they and Pendennis developed over the centuries. Our popular First World War centenary 'Fortress Falmouth' exhibition is re-invigorated.

WHAT'S ON

Pendennis at War

This summer step back in time to the Second World War and experience explosive action and all the thrills of the home front.

SLEEPS 4 + COT

GROUND FLOOR

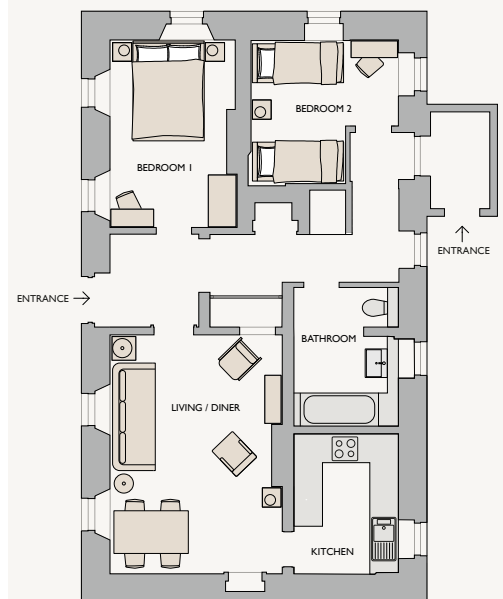
Open plan living/dining room with wood burner; kitchen, double bedroom, twin bedroom, bathroom with bath/shower.

GARDENS

To the rear of the cottage is a private garden with outdoor seating and barbeque. The front of the cottage opens onto the parade grounds of the castle which are yours to enjoy.



1 mile 1/2 mile



Ground Floor



Spend the evening relaxing in your private courtyard with the historic Pendennis Castle as your backdrop.



PENDENNIS CASTLE, CORNWALL

THE CUSTODIAN'S HOUSE

A spacious one bedroom holiday cottage, the Custodian's House has sweeping views of Gyllyngvase Bay and the Cornish coastline beyond.

Crowning a spectacular headland for over 450 years, Pendennis Castle is a memorable setting for some of the best live action events in the area. From fighting knights and battling pirates to spooky Halloween tours – there's something for everyone to enjoy. Climb to the top of the castle and take in panoramic views of the sea, Falmouth town and St Mawes Castle.

The Custodian's House is the ideal base from which to explore this picturesque part of southern Cornwall. The area is steeped in a rich maritime heritage and boasts stunning gardens. Alongside this, discover where Miss Beatrix Potter found her inspiration for the *Tale of Little Pig Robinson* in Falmouth and the setting for Dauphine Du Maurier's *Frenchman's Creek* on the Helford River.

PRICES	From	To
3 nights	£350	£795
4 nights	£365	£835
7 nights	£665	£1,490

For full details and our special offers, visit our website or call a member of our reservations team.

NEW FOR SPRING 2018

New for 2018 is cutting-edge interactive interpretation bringing new life to the castle's story. In the Tudor gun tower, life-sized projected figures and animations let you witness how 16th-century artillerymen reacted to the sudden appearance of enemy ships. In the Half Moon Battery, travel back to another crisis in Pendennis's history, the Second World War:

Experience an air-raid, and watch out for enemy aircraft. Pendennis' guns from the Tudor, to Second World War will demonstrate how they and Pendennis developed over the centuries. Our popular First World War centenary 'Fortress Falmouth' exhibition is re-invigorated.

WHAT'S ON

Pendennis at War

This summer step back in time to the Second World War and experience explosive action and all the thrills of the home front.

SLEEPS 3 + COT

GROUND FLOOR

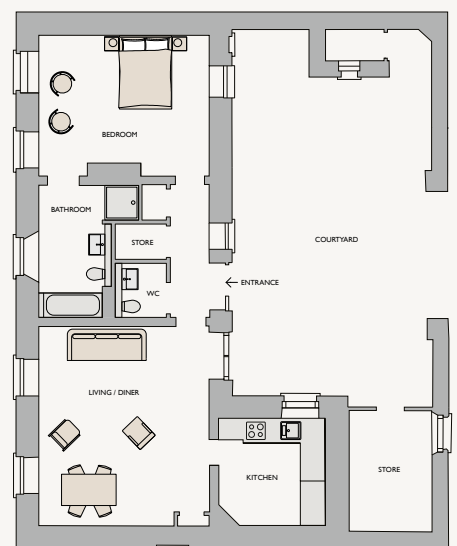
Open plan living/dining room with double sofa bed, kitchen, king bedroom with en-suite bathroom with separate shower.

GARDENS

To the front of the cottage is an enclosed courtyard garden with barbeque. Pendennis Castle grounds are yours to enjoy during your stay.



1 mile ½ mile



Ground Floor



Step out onto the terrace from the dining room and enjoy spectacular views across the Fal Estuary.



FORT HOUSE

Nestled into the hillside just above the castle, this spacious and airy single storey holiday cottage has its own private garden.

Standing guard over the Fal Estuary, St Mawes Castle was built in the 16th century as part of Henry VIII's chain of fortresses to defend the south coast from Spanish and French invasion. With its clover shape and elaborate decorations of friendly gargoyles and carved inscriptions, St Mawes Castle is the most unusual and best-preserved of these coastal forts. The cottage also played a part in defending the Fal Estuary during the Second World War when, due to its commanding position, it was used as an observation point.

Discover the idyllic town of St Mawes, with its historic harbour, rock pools and sandy beaches only a short walk away. Alternatively, take the ferry, or for the more adventurous, a paddle board, to Falmouth town and explore the harbour front with seafood sellers, craft shops, restaurants and bars.

Previous guests will recognise a difference in the Fort House, not only have we given it a face lift turning it white as the rest of St Mawes but it has also had new living and bedroom furniture to make your stay as comfortable as possible.

PRICES	From	To
3 nights	£335	£1,135
4 nights	£360	£1,195
7 nights	£640	£2,125

For full details and our special offers, visit our website or call a member of our reservations team.

WHAT'S ON

Grand Medieval Joust

Experience a true medieval spectacle this summer as knights on horseback clash in a contest of speed and skill at Pendennis Castle just over the water.

SLEEPS 4 + COT

GROUND FLOOR

Living room with wood burner, dining room with French doors to the terrace, kitchen, double bedroom, twin bedroom, bathroom with bath/shower, guest W.C.

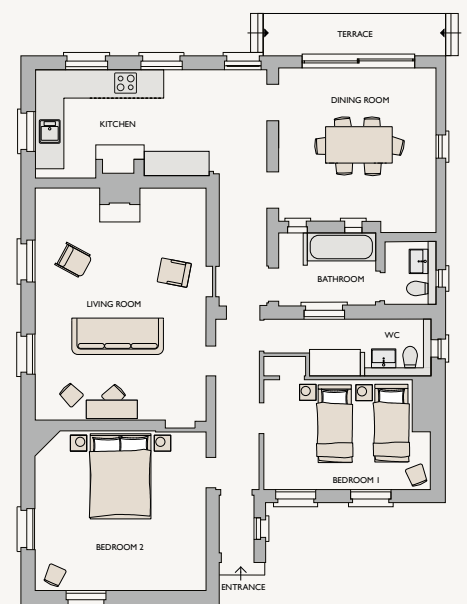
GARDENS

Private gated driveway and enclosed gardens surround the house, seaview patio with barbeque.



½ mile

4 miles (via car ferry)



Ground Floor



Discover the glorious rhododendron-lined paths that lead you to the ruined mansion – with its magnificent fountain featuring Perseus and Andromeda.



WITLEY COURT & GARDENS,
WORCESTERSHIRE

POOL HOUSE

Light and welcoming, the Pool House is ideal for large groups. You can dine inside or outside under the glass canopied patio in the spacious private garden.

This large family house is located in the grounds of one of England's most atmospheric ruins, Witley Court and Gardens. You'll be able to explore the many paths around the grounds and gardens at your leisure once the public have gone home. Wander over to see the Great Witley Church with its dazzling Italianate Baroque interior. Children can have hours of fun in the Wilderness Play Area and trying to spot squirrels and rabbits.

In the Victorian era, Witley Court and Gardens hosted lavish parties. Today, these spectacular ruins still provide a captivating backdrop for a holiday. During your stay why not take a trip to Royal Worcester; the Malvern Hills, Hay-on-Wye – renowned for its bookshops – and the historic town of Ludlow just across the Welsh border. A little further afield, you can explore Birmingham with its jewellery quarter and modern shops or go back in time to the industrial revolution at Iron Bridge.

PRICES	From	To
3 nights	£480	£940
4 nights	£500	£990
7 nights	£885	£1,770

For full details and our special offers, visit our website or call a member of our reservations team.

WHAT'S ON

Hands on Holiday Fun

Get set for a summer packed with time-travelling fun! With lots to see and do, our Hands on History Crew will be bringing history to life throughout the holidays.

SLEEPS 8 + COT

GROUND FLOOR

Living room, kitchen with breakfast bar, dining room, music room, guest W.C.

FIRST FLOOR

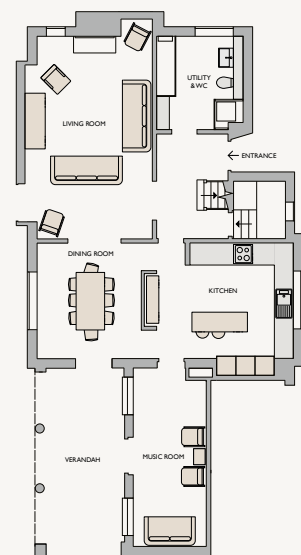
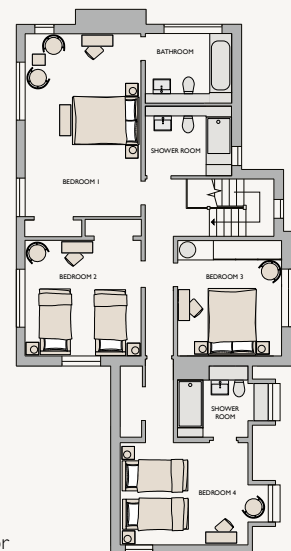
Master super-king bedroom with en-suite bathroom, king/twin bedroom with en-suite shower room, king bedroom, twin bedroom, family shower room.

GARDENS

Private driveway and lawned gardens to the rear of the property with a sheltered dining terrace and brick barbecue. Witley Court Gardens are yours to enjoy during your stay.



1 1/2 miles 3 miles 8 miles



SOUTH OF ENGLAND



As the gateway to the realm, the South East has seen some of the most defining moments in English history. A holiday in the region will lead you straight into the heart of the action. See where the Normans landed the first blows of their conquest at Pevensey Castle and 1066, Battle of Hastings, Abbey and Battlefield; watch a Second World War rescue unfold at Dover Castle or marvel at Queen Victoria's state entertainment at Osborne on the Isle of Wight.

The region's coastline offers clifftop walks, expansive beaches and towns where boutique shops, fishing heritage and world-class cuisine all jostle side-by-side.





Walk along the ramparts at dusk and conjure up thoughts of the advancing Spanish Armada.



CARISBROOKE CASTLE, ISLE OF WIGHT

THE BOWLING GREEN APARTMENT

This contemporary apartment is on the second floor of the 19th-century former service block, inside the castle walls. With the keep rising above you, enjoy the excitement of having a castle all to yourself.

Built in the 12th century, Carisbrooke Castle has been an enduring stronghold against invading forces. During the Civil War Charles I was held prisoner here and attempted to escape through the window in his bedchamber – but became wedged between the bars. The castle has also served as a residence for the governors of the Isle of Wight, which included the youngest daughter of Queen Victoria, Princess Beatrice. She spent her summers here and the Privy Garden is named after her.

During your stay, explore the castle and let the kids get dressed up in armour, fire a mini-cannon and meet the famous donkeys. Head over to Osborne, the family home of Queen Victoria and spend the day discovering the royal residence and private beach. Explore the rest of the island – full of outstanding natural beauty and the dinosaur capital of Great Britain. From the boats and beaches to the atmospheric villages, there's something for everyone.

PRICES	From	To
3 nights	£335	£915
4 nights	£360	£960
7 nights	£640	£1,580

For full details and our special offers, visit our website or call a member of our reservations team.

WHAT'S ON

Joust

Highly trained knights in armour and their magnificent steeds battle for good or evil throughout August. Choose your side, dark or light, and watch as an ultimate display of chivalry determines the victor of this medieval spectacular.

SLEEPS 4 + COT

SECOND FLOOR

Open plan kitchen/living/dining room, king bedroom, bunk-bedroom, bathroom with bath/shower.

GARDENS

Sleeping in the heart of the castle, the grounds are yours to enjoy during your stay.



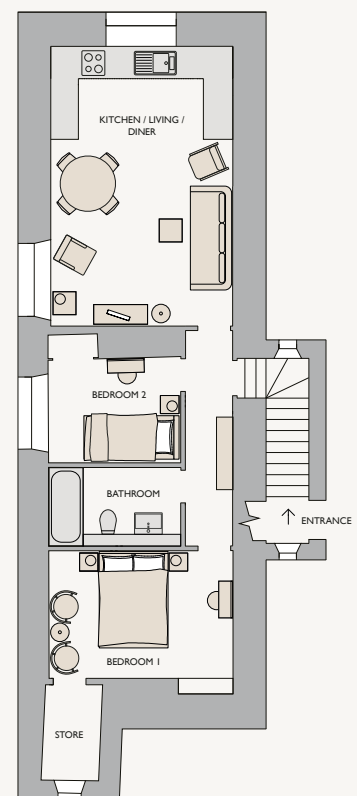
½ mile



6 miles



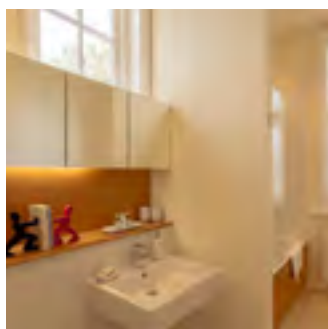
1 mile



Ground Floor



Relax at the beach on traditional deck chairs overlooking a view that reminded Prince Albert of the Bay of Naples.



OSBORNE, ISLE OF WIGHT

PAVILION COTTAGE

Stay at the former cricket pavilion in the grounds of Queen Victoria's family home. Brimming with period character, spend your evenings enjoying a starlit sky on the verandah.

Osborne is tailor-made for a holiday. Developed by Queen Victoria and Prince Albert, it was used as a private residence where they could raise their growing family. Prince Albert was heavily involved with all aspects of creating the new house and estate with the help of Thomas Cubitt. Edward VII opened Osborne to the public in 1904 and now it provides an intimate insight into a story of marriage, family and empire.

You can enjoy a number of Victorian-themed events throughout the year including vintage Punch and Judy shows during the summer. Osborne's gardens are a constant source of inspiration – from the tulips to the fruit trees and rhododendron-lined walks. Discover the royal family's bathing beach before strolling to the children's play-cottage, Swiss Cottage.

Bring your bicycle on holiday as we permit bikes and children's push scooters on the estate when the estate is closed to the public.

PRICES	From	To
3 nights	£460	£1,135
4 nights	£475	£1,195
7 nights	£855	£2,125

For full details and our special offers, visit our website or call a member of our reservations team.

WHAT'S ON

Victoria's Fabulous Garden Party

Come and celebrate Queen Victoria's birthday at the end of May with a fabulous party at her favourite home by the sea. Enjoy a traditional garden extravaganza with side saddle riders, jugglers, sideshows, sun, sea, tea and cake. Enjoy a real British celebration fit for a queen.

SLEEPS 4 + COT

GROUND FLOOR

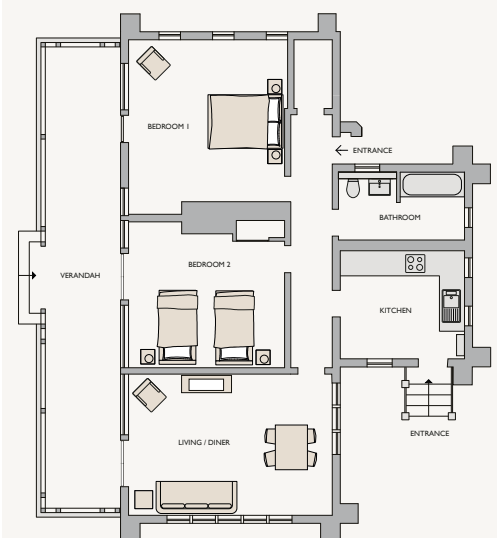
Open plan living/dining room, kitchen, king bedroom, king/twin bedroom, bathroom with bath/shower.

GARDENS

Private parking and lawned gardens surround the cottage with a covered verandah leading to a deck overlooking the countryside. Osborne's grounds and beach are yours to enjoy during your stay.



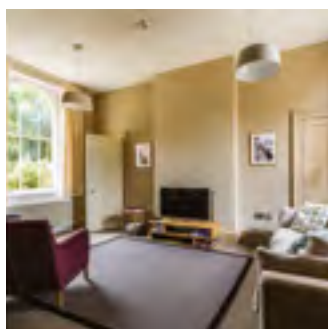
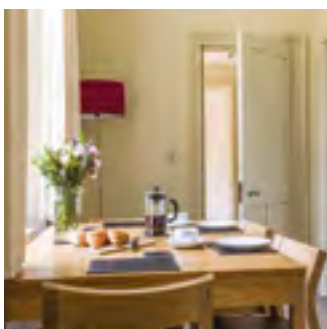
½ mile 1 ½ miles



Ground Floor



Stroll down to the beach for a picnic where Queen Victoria's children learnt to swim and sit in the alcove where she liked to sketch.



OSBORNE, ISLE OF WIGHT

NO. 1 SOVEREIGN'S GATE

Reminiscent of something from the Mediterranean and framed by palm trees, No 1 Sovereign's Gate is the ceremonial entrance to this royal retreat and can also be booked with No 2 Sovereign's Gate.

During her first visit to the site, Queen Victoria commented that 'it is impossible to imagine a prettier spot'. Osborne grew to be the private home for the royal family for over 50 years, after being developed by Prince Albert. They had 'the quite charming beach' to themselves and the royal children even learnt to swim there.

Osborne is packed with places to explore – from the sumptuous state rooms to the intimate family rooms where Victoria and Albert used to listen to nightingales on a summer's evening. Stand in awe at the Durbar room, styled to reflect Queen Victoria's status as Empress of India. Stroll to the beach for a picnic and discover the personalities of each of the nine children at the Swiss Cottage. Head out to Cowes, whose sailing heritage is long and rich, or hop on a bicycle and wind your way to picturesque seaside villages.

Bring your bicycle on holiday as we permit bikes and children's push scooters on the estate when the estate is closed to the public.

PRICES	From	To
3 nights	£400	£950
4 nights	£420	£990
7 nights	£745	£1,770

For full details and our special offers, visit our website or call a member of our reservations team.

WHAT'S ON

Victorian Seaside Fun

Laugh out loud at Punch & Judy and discover the fun of a Victorian day out at the house by the sea Queen Victoria loved to call home.

SLEEPS 4 + COT

GROUND FLOOR

Living room, dining room, kitchen, king bedroom, bathroom with bath/shower.

FIRST FLOOR

Shower room.

SECOND FLOOR

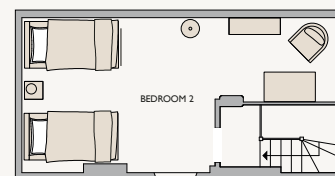
Twin bedroom.

GARDENS

Private lawned gardens with a dining patio and bicycle store. Osborne's grounds and beach are yours to enjoy during your stay.



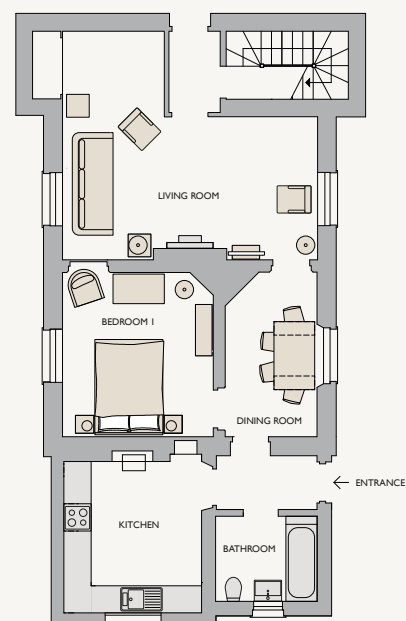
½ mile 1 ½ miles



Second Floor



First Floor



Ground Floor



Stroll down to the beach for a picnic where Queen Victoria's children learnt to swim and sit in the alcove where she liked to sketch.



OSBORNE, ISLE OF WIGHT

NO. 2 SOVEREIGN'S GATE

With modern comforts in harmony with the historic interior, this mirror image of No. 1 Sovereign's Gate also has its own private garden. Although not used by visitors today, it remains the entrance by which members of the royal family enter the estate.

Queen Victoria described the estate as 'our dear Osborne, which is like a little paradise for us' and it still has all the trappings for a peaceful holiday today. Away from court life at the other royal residences, it was used by Queen Victoria for over 50 years. It was here that she found solace after Prince Albert died and where she herself passed away 40 years later.

Take time to explore the vast estate when the public have left for the day. Glimpse the private lives of the royal family in the many rooms of the house, and find out more about the royal children at the Swiss Cottage. During spring, take in the scents of the magnolias and blossom in the fruit trees. Explore further afield with a trip to Cowes where life is mainly on the water. The island is packed with picturesque villages, beaches and myriad opportunities for walks and bike rides.

Bring your bicycle on holiday as we permit bikes and children's push scooters on the estate when the estate is closed to the public.

PRICES	From	To
3 nights	£400	£950
4 nights	£420	£990
7 nights	£745	£1,770

For full details and our special offers, visit our website or call a member of our reservations team.

WHAT'S ON

Outdoor Theatre

Join us this summer for an outdoor theatre production on the lawns.

SLEEPS 4 + COT

GROUND FLOOR

Living room, dining room, kitchen, king bedroom, bathroom with bath/shower.

FIRST FLOOR

Shower room.

SECOND FLOOR

Twin bedroom.

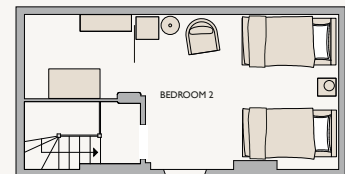
GARDENS

Private lawned gardens with a dining patio and bicycle store. Osborne's grounds and beach are yours to enjoy during your stay.



½ mile

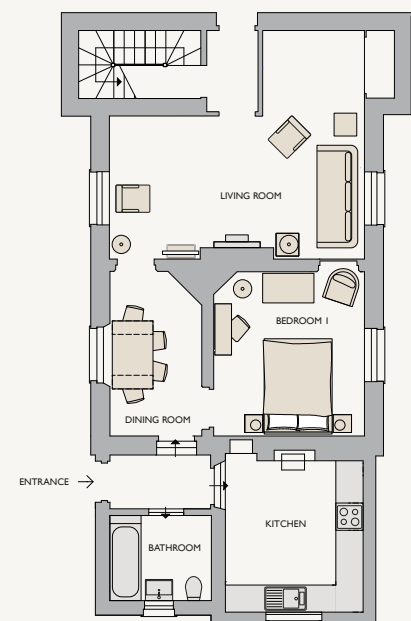
1 ½ miles



Second Floor



First Floor



Ground Floor



Wake up next to one of the most famous battlefields in history.



BATTLE ABBEY, EAST SUSSEX

SOUTH LODGE

Situated at the far end of the battlefield on the road to Pevensey, South Lodge is an enchanting stone cottage and former gatehouse, partially surrounded by woodland.

Fought on the 14th October 1066, the Battle of Hastings altered the course of English history when the triumphant William, Duke of Normandy, defeated King Harold and marked the end of Anglo-Saxon England. To commemorate his victory and atone for the devastating loss of life, William I built a Benedictine abbey on the exact spot where King Harold is said to have died.

From South Lodge, use the connecting gate to enter the battlefield and imagine it being torn apart by soldiers and cavalry. During opening hours, head to the visitor centre to discover more about this iconic turning point in history and get hands-on with replica weaponry and the interactive exhibitions. Walk through the abbey, stroll through the medieval cloisters and stand where it's said King Harold died.

The town of Battle is on your doorstep and you can head to the beaches at the nearby town of Hastings to sample the traditional food and soak up the sun.

PRICES	From	To
3 nights	£335	£915
4 nights	£360	£960
7 nights	£645	£1,720

For full details and our special offers, visit our website or call a member of our reservations team.

WHAT'S ON

Haunted Abbey

Feeling brave enough to take on the haunted abbey ruins of Battle? Be prepared to be scared this autumn half term as a frighteningly fun day out awaits you. Join our spooky Halloween adventure if you dare.

SLEEPS 4 + COT

GROUND FLOOR

Open plan living/dining room, kitchen, king bedroom, king/twin bedroom, bathroom with bath/shower.

GARDENS

Private gated driveway and lawned gardens with views over the battlefield which is yours to enjoy during your stay.



½ mile



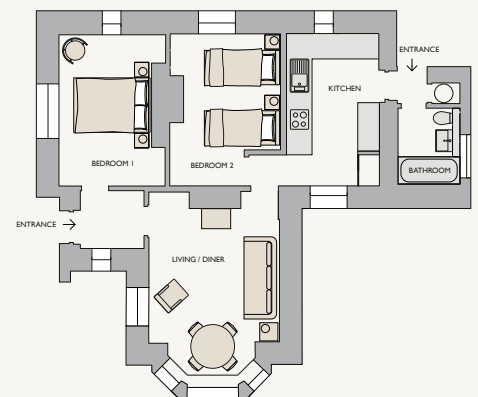
6 miles



1 mile



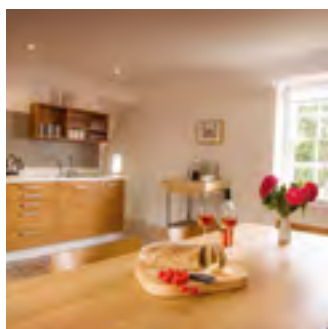
½ mile



Ground Floor



Staying in the grounds of Dover Castle is to be enveloped by hundreds of years of history.



THE SERGEANT MAJOR'S HOUSE

Situated inside the castle's historic walls, this spacious and elegant four-storey Georgian building has its own grounds with captivating views over the town and out to France.

From its commanding location, Dover Castle has guarded the Channel for over nine centuries – you'll be holidaying on the frontline of English history. At the core of the castle stands the Great Tower, built by Henry II as a palace to entertain great visitors including the Holy Roman Emperor, Charles V. Underfoot is a network of chalk-cut tunnels. Head down to witness one of Dover's most important roles as you watch 'Operation Dynamo' play out and follow the rescue of allied troops from Dunkirk.

Your stay will be a busy one: delve into the tunnels, explore the Great Tower, visit the WWI Fire Command Post and discover the UK's oldest surviving lighthouse. Outside the castle walls, take a trip to nearby Deal and weave through the smuggler's lanes or head to Walmer Castle. Stretch your legs along the cliff top trails or walk along the largest shingle beach in Europe at Dungeness.

PRICES	From	To
3 nights	£560	£1,135
4 nights	£590	£1,200
7 nights	£1,045	£2,125

For full details and our special offers, visit our website or call a member of our reservations team.

WHAT'S ON

Grand Medieval Joust

In August witness the spectacular medieval art of jousting. Step back in time and experience a spectacular tournament full of rich pageantry and excitement.

SLEEPS 6 + COT

BASEMENT

TV room, games room with table-tennis table.

GROUND FLOOR

Living room, open plan kitchen / dining room, guest W.C.

FIRST FLOOR

Master king/twin bedroom, double bedroom, bathroom with bath/shower.

SECOND FLOOR

Twin bedroom with en-suite shower room.

GARDENS

Private lawned gardens surround the property with a sheltered barbeque terrace. Dover Castle's grounds are yours to enjoy during your stay.



½ miles



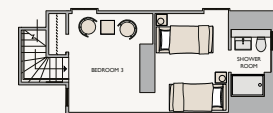
1 mile



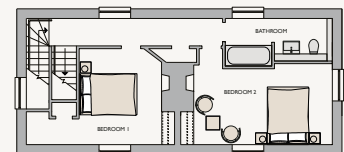
3½ miles



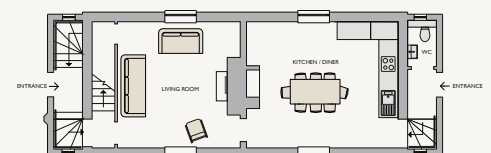
1½ miles



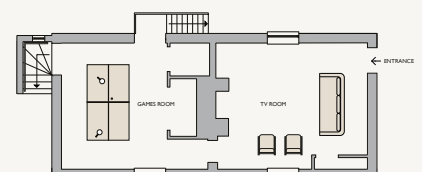
Second Floor



First Floor



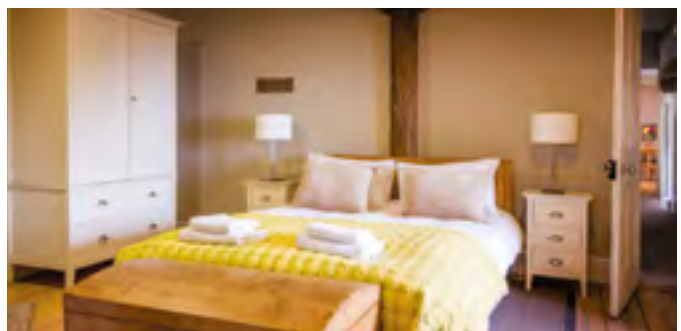
Ground Floor



Basement



The private roof terrace gives guests an unparalleled panoramic view over the Channel.



PEVERELL'S TOWER

Built high within the walls of Dover Castle, this 13th-century tower is as rich in character as it is in history. An ideal location for a romantic getaway or it can be booked with The Sergeant Major's House for larger groups.

Dover Castle is steeped in over 900 years of history. Roam through the centuries and step into dramatic scenes from England's past. As part of an action-packed break, you can take in sieges, the royal court of Henry II, garrison life in the First World War and the miracle evacuation from Dunkirk. Time your stay to coincide with one of the many events that are staged at the fortress. Children will be thrilled to see castle stories come to life.

After hours, when the site closes to the public you have exclusive access to the extensive grounds. Walk along the picturesque white cliffs of Dover where you might be lucky enough to spot some sealife. You can also explore the wild salt marshes at Romney and stroll along the shingle beach at Dungeness. Children under 16 are not allowed at Peverell's Tower due to the roof terrace.

PRICES	From	To
3 nights	£465	£770
4 nights	£475	£810
7 nights	£855	£1,450

For full details and our special offers, visit our website or call a member of our reservations team.

WHAT'S ON

WWII Weekend

For a full-on forties experience this May, it has to be WWII Weekend at Dover Castle.

SLEEPS 2

GROUND FLOOR

Shower room.

FIRST FLOOR

Open plan kitchen/dining room, living room, king bedroom.

ROOF

Private roof terrace with restricted access overlooking the castle, sea and Dover.

GARDENS

Courtyard garden to the front of the cottage. Dover Castle's grounds are yours to enjoy during your stay.

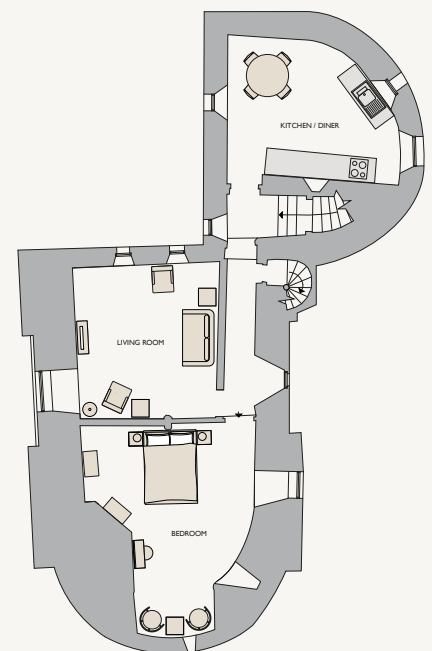


½ mile

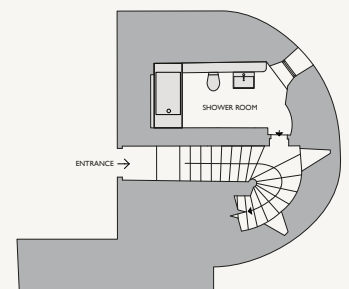
1 mile

3½ miles

1½ miles



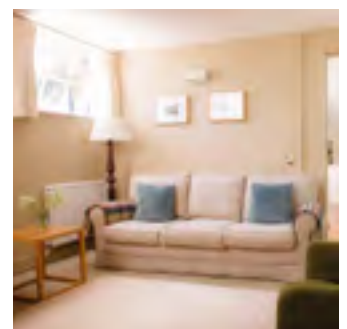
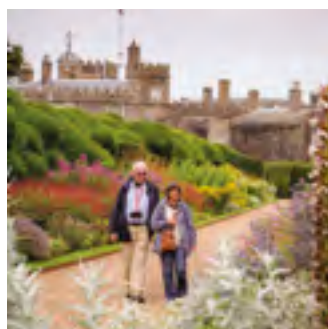
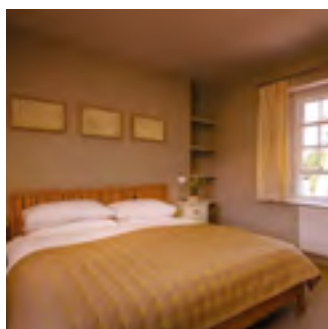
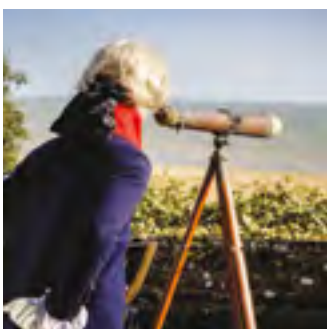
First Floor



Ground Floor



Head to this fortress by the sea and follow in the footsteps of some of England's most distinguished names.



GARDEN COTTAGE

The spacious two bedroomed Garden Cottage has the castle to one side and the beach on the other. It looks out onto the kitchen garden, which has supplied the castle with flowers, fruit and vegetables for over three centuries.

Built by Henry VIII to help protect the English coastline, Walmer Castle became the home of the Lord Warden of the Cinque Ports. This prestigious post has been held by many famous names in English history including William Pitt the Younger, the Duke of Wellington, Sir Winston Churchill and Queen Elizabeth the Queen Mother.

Discover more about Walmer Castle's most renowned resident, the Duke of Wellington. Explore his life at the castle and visit his room which was used as a bedroom and living space – see the chair in which he died and an original pair of Wellington boots. Outside your front door, there are eight acres of gardens and woodland to explore as well as a picturesque beach. Head to Sandwich to see the medieval timbered houses or stop off at the historic cathedral city of Canterbury before dining on oysters at the Whitstable seafront.

To celebrate the centenary of Votes for Women, look out for garden plantings in the Suffragette colours of green, white and purple.

PRICES	From	To
3 nights	£405	£670
4 nights	£425	£705
7 nights	£765	£1,260

For full details and our special offers, visit our website or call a member of our reservations team.

PLEASE NOTE

Due to an exciting project to rediscover Walmer's Pleasure Gardens the holiday cottages will not be available to rent from May 2018. Please keep updated with the progress of the new tearoom and education facility on our website.

SLEEPS 4 + COT

GROUND FLOOR

Living room, open plan kitchen/dining room, guests W.C.

FIRST FLOOR

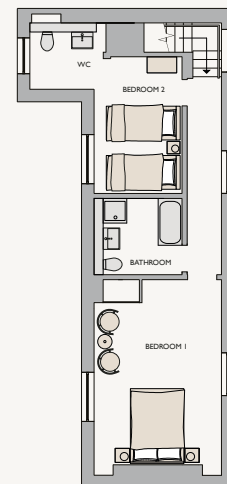
Double bedroom, bathroom with bath/shower; twin bedroom with en-suite W.C.

GARDENS

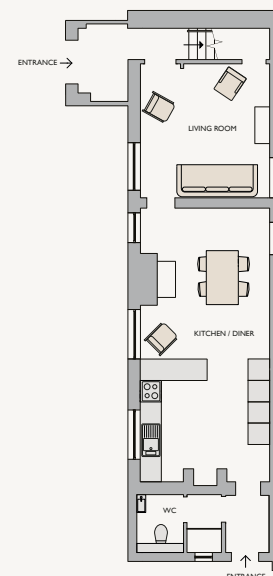
Standing in the heart of the kitchen garden adjacent to The Greenhouse Apartment the castle's grounds are yours to enjoy.



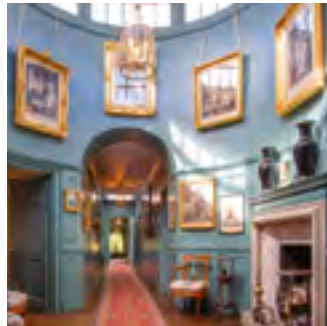
1 mile ½ mile 1 ½ miles



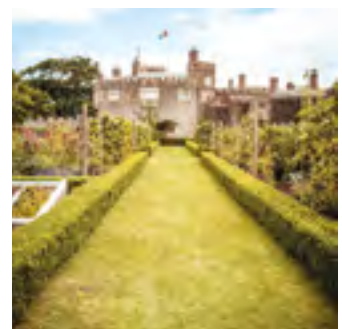
First Floor



Ground Floor



Open your door onto eight acres of garden and woodland as well as a picturesque beach.



THE GREENHOUSE APARTMENT

This roomy, first floor apartment overlooks the walled garden and offers lovely views of the castle. Larger groups could also book the adjacent Garden Cottage.

Built between 1539 and 1540, Walmer Castle was one of Henry VIII's chain of artillery forts. Garrisoned until the 19th century, it became the official residence of the Lord Warden of the Cinque Ports, a position once held by the Duke of Wellington, William Pitt the Younger and Sir Winston Churchill. Queen Elizabeth the Queen Mother is the only woman to have held the post. She stayed at Walmer every July and a special garden was created for her at the castle as part of the celebrations for her 95th birthday.

Using the Garden Apartment as a base, spend your days exploring the history of Walmer Castle and some of its famous residents. Head to Dover and discover over 900 years of history at Dover Castle including a trip into the Great Tower and the Secret Wartime Tunnels. In the evening, you can stroll along the shingle beach up to Deal and enjoy some of the fresh local seafood.

To celebrate the centenary of Votes for Women, look out for garden plantings in the Suffragette colours of green, white and purple.

PRICES	From	To
3 nights	£330	£575
4 nights	£355	£605
7 nights	£630	£1,080

For full details and our special offers, visit our website or call a member of our reservations team.

PLEASE NOTE

Due to an exciting project to rediscover Walmer's Pleasure Gardens the holiday cottages will not be available to rent from May 2018. Please keep updated with the progress of the new tearoom and education facility on our website.

SLEEPS 4 + COT

FIRST FLOOR

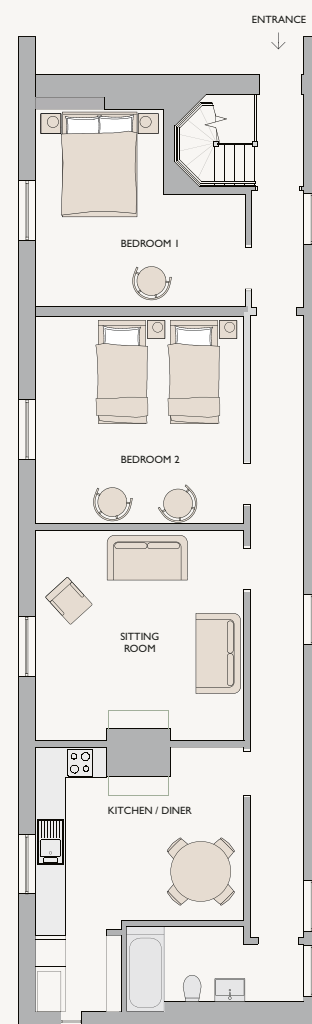
Open plan kitchen/dining room, double bedroom, twin bedroom, bathroom with bath/shower.

GARDENS

Standing in the heart of the kitchen garden adjacent to Garden Cottage the castle's grounds are yours to enjoy.



1 mile ½ mile 1 ½ mile



First Floor

EAST OF ENGLAND



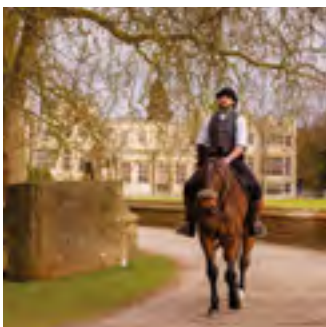
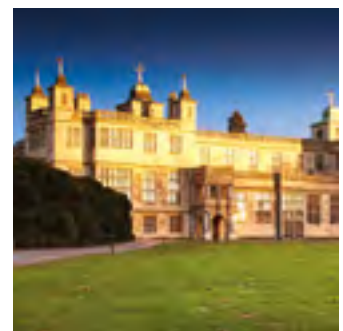
You don't have to journey far from London to plunge into the rural landscape of the East of England. Thread your way across the countryside towards the sweeping coastal beaches and discover baronial castles, landscaped gardens and aristocratic homes. Take the chance to experience the bustle of stately home life in the Victorian era at Audley End House and Gardens or stand on the ramparts at Framlingham Castle – where Mary Tudor was mustering troops when she was proclaimed Queen of England.

When it's time to refuel there are rich culinary pickings from the coastline, farmland and vineyards. Browse a farmers market, pick up fish and chips on a pier or eat in style at a seaside town.





Watch the sunset from the grounds, which are partially designed by Lancelot 'Capability' Brown.



AUDLEY END HOUSE & GARDENS, ESSEX

CAMBRIDGE LODGE

Overlooking a private formal garden, Cambridge Lodge is an elegant two storey Victorian gatehouse built in 1842 and is the perfect place to relax all year round.

Audley End House is a palace in all but name. Designed to help entice royalty to come and stay it succeeded on multiple occasions, playing host to Elizabeth I, James I and ultimately being owned by Charles II. Today the house's interior largely represents the taste of the third Baron Braybrooke, who redecorated many of its rooms in the Jacobean style during the 1820s.

Spend your days exploring the mansion house and sampling Victorian life above and below stairs. Learn from the Victorian staff in the atmospheric Service Wing, wander through the tranquil gardens and visit the horses in the Victorian stable yard. Discover the nursery used by the eight Braybrooke children now restored to its former 1830s glory. Head down to Saffron Walden for market day and uncover foodie delights such as Tiptree Jam and Maldon salt. Just a stone's throw away from London - it feels a world away with its rural farmland and vineyards ripe to be explored.

You can now pre-order a summer picnic or afternoon tea from our tearoom. Please telephone site 48 hours in advance to book your picnic, presented in an English Heritage jute bag.

PRICES	From	To
3 nights	£425	£985
4 nights	£445	£1,305
7 nights	£805	£1,855

For full details and our special offers, visit our website or call a member of our reservations team.

WHAT'S ON

Life Above and Below Stairs

Put on your apron and get your riding crop at the ready as you join us at Audley End as it's brought to life this summer. Come face-to-face with Mrs Crocombe as she prepares a meal for the family.

SLEEPS 4 + COT

GROUND FLOOR

Living room, kitchen and dining room.

FIRST FLOOR

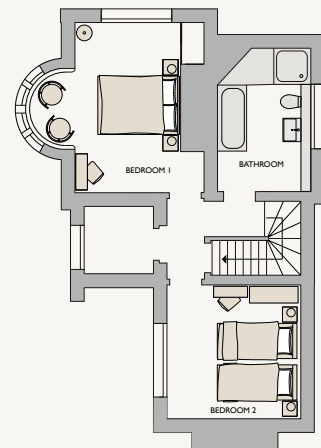
Double bedroom, twin bedroom, bathroom with bath and separate shower.

GARDENS

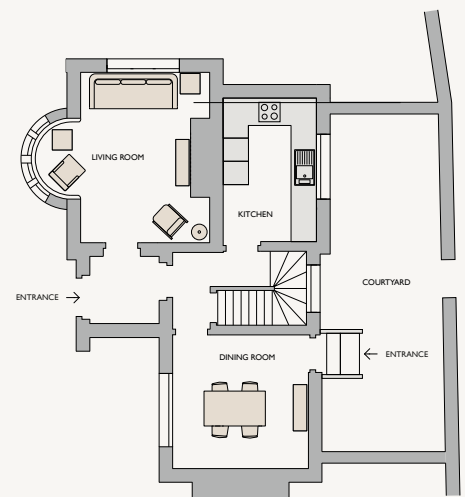
Formal front gardens with seating area overlooking the cricket pitch and Audley End House, sheltered courtyard to the rear.



1 mile 2 miles



Second Floor



Ground Floor

EAST MIDLANDS

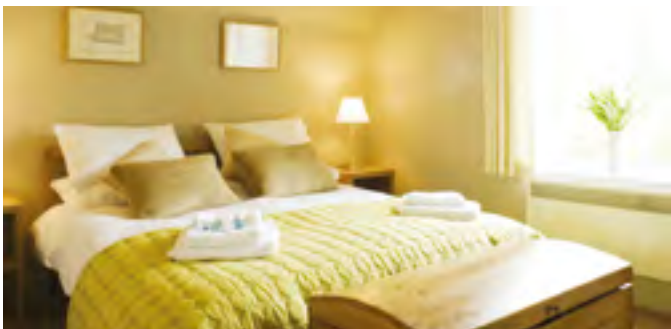


HARDWICK OLD HALL

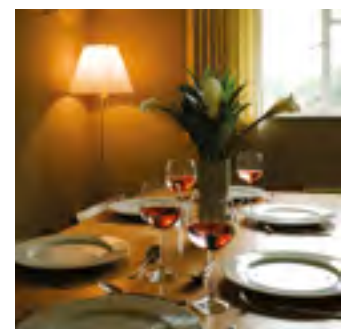
Easily reached from elsewhere in the country, the East Midlands is an ideal spot for a short break or holiday, where you'll discover remarkable pockets of history nestled into breathtaking landscapes. Spend your days in the company of medieval, Elizabethan and Stuart aristocrats and their servants – from the Cavalier playboy, William Cavendish at Bolsover Castle to the impressive Bess of Hardwick at Hardwick Old Hall.

Walking paths and cycle routes crisscross the Peak District National Park, offering endless opportunities to explore remote moorland, meander through market towns and call into villages dotted across the countryside.





Spend your evening exploring the ruins of this once great house and the recently restored Great Garden.



KIRBY HALL, NORTHAMPTONSHIRE

PEACOCK COTTAGE

This cottage, named after the 15 peacocks that live in the grounds of Kirby Hall, stands at the end of an avenue of horse chestnut trees. It has an enclosed garden and opens onto the hall's parklands.

Kirby Hall was the home of Sir Christopher Hatton, Queen Elizabeth I's Lord Chancellor, who spared no expense in an attempt to persuade her to visit during one of her 'royal progresses'. Begun in 1570, Kirby Hall did have its share of royal visitors including James I and Queen Anne but fell into ruin during the 19th century. Although in some parts roofless, many of the rooms in this atmospheric mansion have been recreated in authentic designs, in addition to the Great Garden.

Explore the extensive grounds where you can have a picnic, play games or just go for a quiet walk when the hall has closed its doors to the public for the day. Peacock Cottage also gives you access to the miles of walks and cycle paths of Rutland. Discover regional foodie treats from Stilton cheese to Melton Mowbray pork pies as well as exciting entertainment for the family from space exploration to zoos.

PRICES	From	To
3 nights	£335	£750
4 nights	£360	£795
7 nights	£640	£1,420

For full details and our special offers, visit our website or call a member of our reservations team.

WHAT'S ON

Outdoor theatre

Join us this summer for an outdoor theatre production on the lawns.

SLEEPS 4 + COT

GROUND FLOOR

Living room, kitchen, dining room, bathroom with bath/shower.

FIRST FLOOR

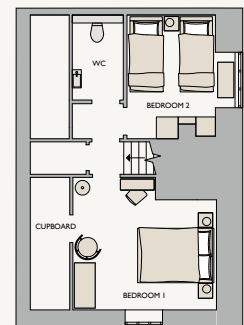
Double bedroom, twin bedroom, guest W.C.

GARDENS

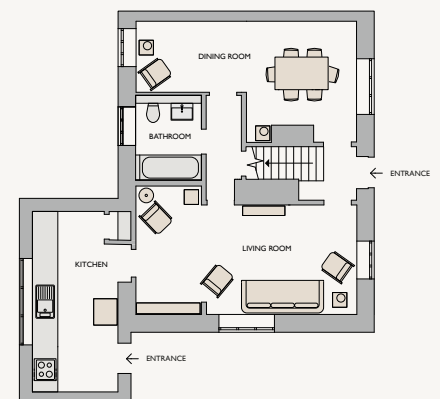
Private gated driveway and lawned gardens with outdoor dining area. Kirby Hall's grounds are yours to enjoy during your stay.



2 miles 4 miles



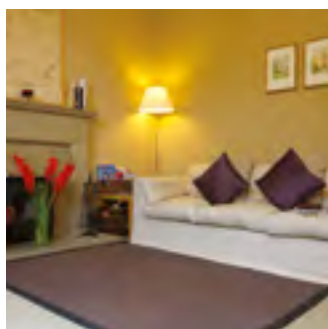
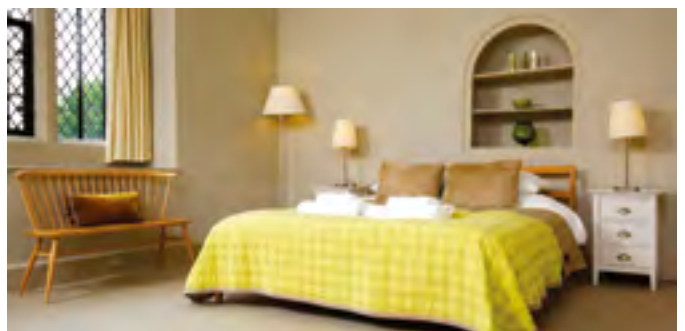
First Floor



Ground Floor



Discover more about one of the most formidable women in Elizabethan England, Bess of Hardwick.



EAST LODGE

Built into the walls of Hardwick Old Hall, East Lodge is a spacious two bedroomed cottage. With views of the halls from the master bedroom and with a wood burner in the living room, East Lodge is the perfect family base in summer and a cosy hideaway in winter.

This late 16th-century hall was one of the most innovative houses of its time. It was home to Bess of Hardwick who rose, via four marriages, to become Countess of Shrewsbury and one of the richest women in England. She took inspiration from newly fashionable Italian villa design as well as continental architectural books. Bess and her granddaughter moved into Hardwick New Hall in 1597 and the Old Hall was used by relatives and friends of the family until the mid-1700s when it was partially demolished.

Trace the remarkable story of Bess of Hardwick in the exhibitions in the West Lodge and climb the roof to watch the sunset over the Derbyshire countryside. Take a trip to the Peak District and explore this area of natural beauty during a walk or cycle ride. Stroll through the nearby market towns and sample local produce such as the Bakewell pudding.

PRICES	From	To
3 nights	£460	£915
4 nights	£475	£960
7 nights	£855	£1,715

For full details and our special offers, visit our website or call a member of our reservations team.

WHAT'S ON

Cavendish Horses

Witness expert horsemen in flamboyant 17th century costume at nearby Bolsover Castle at weekends throughout the summer; training for Art and Battle to baroque music in the spectacular surroundings of the Riding School.

SLEEPS 5 + COT

GROUND FLOOR

Open plan kitchen/dining room, living room, guest W.C.

FIRST FLOOR

Super-king bedroom, twin bedroom with extra single bed suitable for children, bathroom with bath/shower.

GARDENS

Private patio overlooking the Old Hall where the grounds are yours to enjoy during your stay.



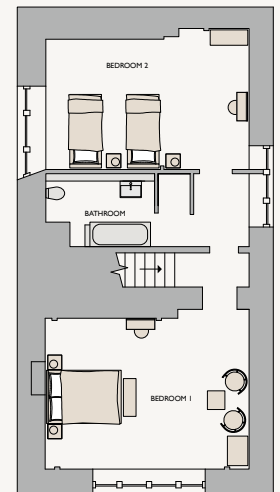
½ mile



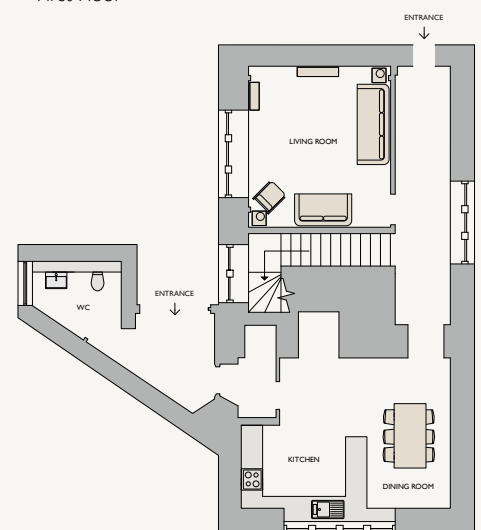
2 miles



8 miles



First Floor



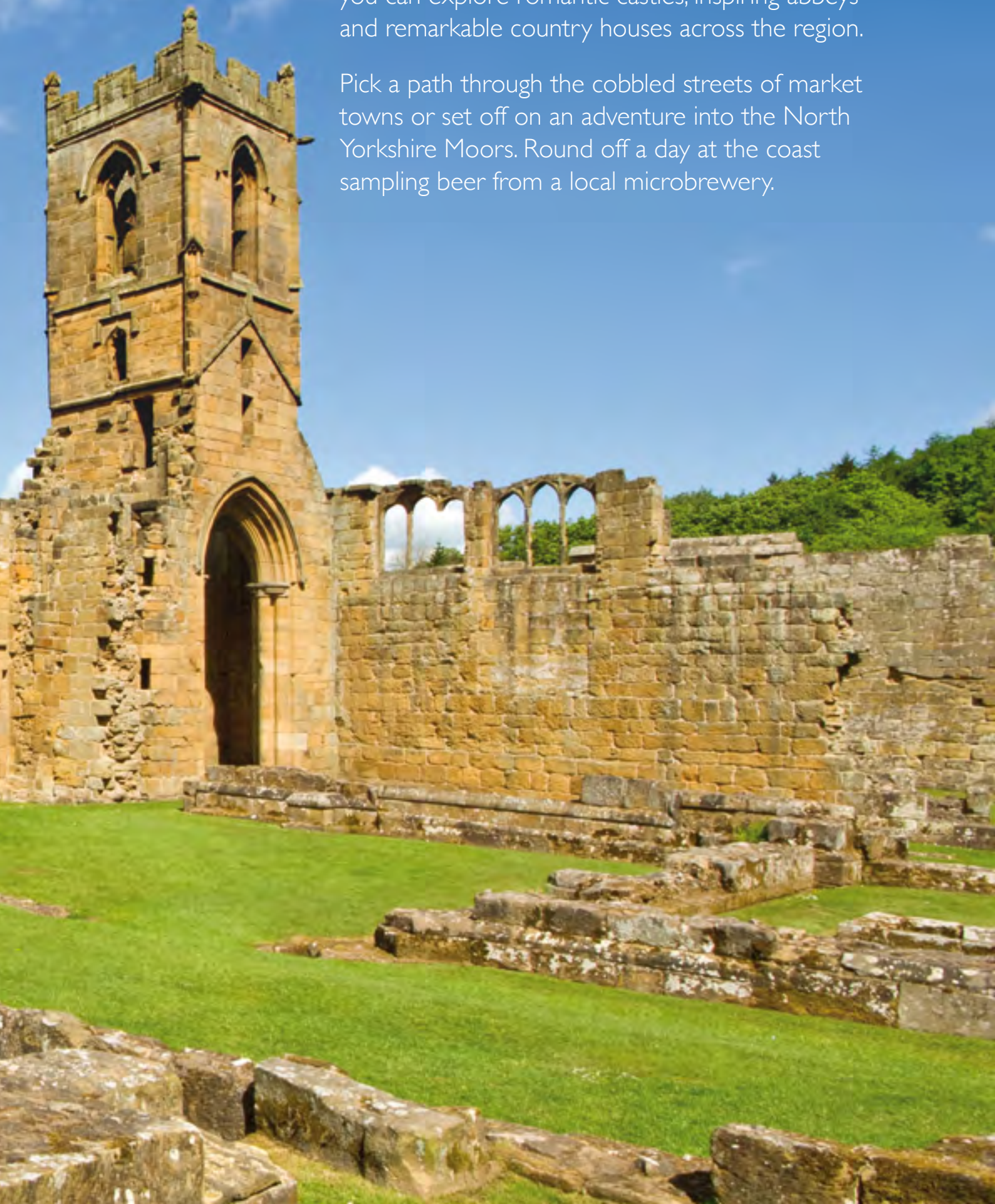
Ground Floor

NORTH YORKSHIRE



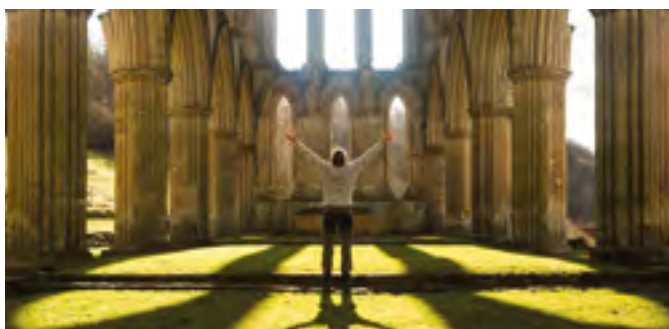
Strike out to the North of England for a holiday packed with exciting tales of unruly barons and castle sieges. Set within rugged moorland and on craggy headlands you can explore romantic castles, inspiring abbeys and remarkable country houses across the region.

Pick a path through the cobbled streets of market towns or set off on an adventure into the North Yorkshire Moors. Round off a day at the coast sampling beer from a local microbrewery.





Soak up the serenity inside the ruins of what was once one of the wealthiest abbeys in the country.



RIEVAULX ABBEY, YORKSHIRE

REFECTORY COTTAGE

Built in the early 20th-century the cottage is made from reclaimed stones from the abbey and was previously the home of the abbey's custodian. Spacious and comfortable, the cottage is perfect for watching the spectacular sunsets through the abbey's ruins.

Rievaulx Abbey was once one of the wealthiest monasteries in medieval England. St Aelred, the abbey's third abbot, described it as 'everywhere peace, everywhere serenity' and it still offers the same sense of escapism for a holiday today. In 1538, the abbey was dissolved by Henry VIII during the suppression of the monasteries and much of its contents stripped. For much of its later life, Rievaulx was seen as picturesque ruins and an increasingly popular visitor destination during the 18th century when the first attempts to preserve the ruins were made.

Refectory Cottage is an ideal spot from which to explore the North York Moors. The Cleveland Way is on your doorstep and you can head into the city of York. Walk from the abbey to the nearby town of Helmsley and try the local craft beer or the award winning fish and chips.

PRICES	From	To
3 nights	£350	£940
4 nights	£375	£985
7 nights	£665	£1,770

For full details and our special offers, visit our website or call a member of our reservations team.

WHAT'S ON

Illuminated Rievaulx

See Rievaulx Abbey in a new light as it is bathed in dramatic illuminations this Autumn.

SLEEPS 5 + COT

GROUND FLOOR

Open plan kitchen/dining room, living room, guest W.C.

FIRST FLOOR

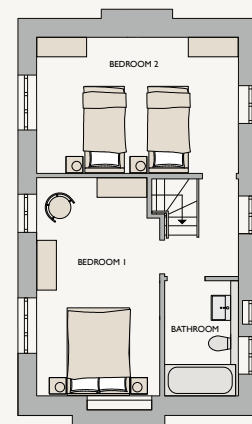
King bedroom, twin bedroom with extra single bed, bathroom with bath/shower.

GARDENS

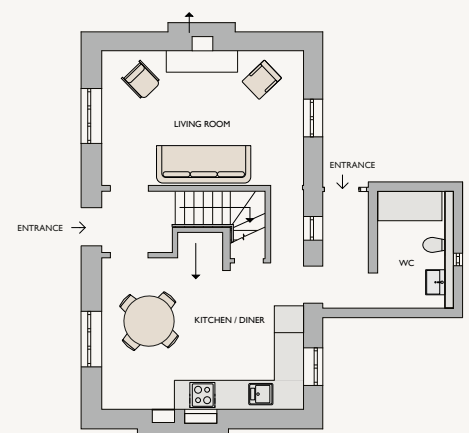
Private lawned gardens surround the cottage with a barbeque patio overlooking the ruins. Rievaulx Abbey's grounds are yours to enjoy during your stay via a private gate.



2 miles 8 miles



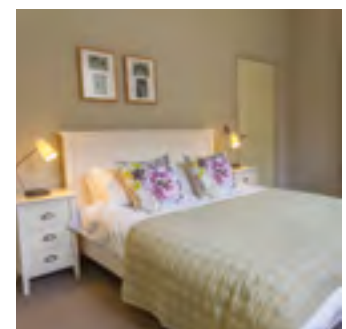
First Floor



Ground Floor



Whether you're enjoying the clear summer sunshine or exploring the frosty ruins in winter, a stay here will create a memorable impression.



MOUNT GRACE PRIORY, HOUSE AND GARDENS, YORKSHIRE

PRIOR'S LODGE

Picturesquely set beneath a wooded slope of the Cleveland Hills, this single storey cottage is built across three buildings overlooking the ecclesiastical ruins.

Founded in 1398, Mount Grace Priory, House and Gardens is one of the best-preserved Carthusian monasteries in England. The monks who called it home lived as a community of hermits and today you can explore this isolated lifestyle in a recreated monk's cell and garden. The priory and its beautifully preserved gardens still offer an appealing sense of solitude – making for a peaceful holiday. In the 17th century the guest house was transformed into a family residence, which was extended in 1901 by Sir Lowthian Bell, wealthy patron of the Arts and Crafts movement. You can see some of the rooms refurbished in this style, complete with William Morris wallpaper.

During your stay, take the chance to enjoy the surrounding Yorkshire countryside. Discover the wealth of activities at your fingertips in the North York Moors and along the Cleveland Way National Trail.

PRICES	From	To
3 nights	£335	£770
4 nights	£360	£810
7 nights	£640	£1,450

For full details and our special offers, visit our website or call a member of our reservations team.

NEW FOR SPRING 2018

We'll be transforming the experience of visiting Mount Grace Priory, House and Gardens in 2018. A wide range of enhancements includes renowned garden designer Chris Beardshaw's renovation of the Arts and Crafts gardens; the research-based replanting of the monk's garden; restoring meadow wildflower grassland and introducing garden tours for the first time. We'll also have a new café by the orchard which you can make full use of during your stay and fresh interpretation to help families discover more about nature within the site.

WHAT'S ON

Blooming Gardens

See the spring blooms bursting to life as we celebrate our beautiful gardens.

SLEEPS 4 + COT

GROUND FLOOR

Open plan living/dining room, kitchen, bathroom with bath/shower, utility room, king bedroom with en-suite shower room, twin bedroom.

GARDENS

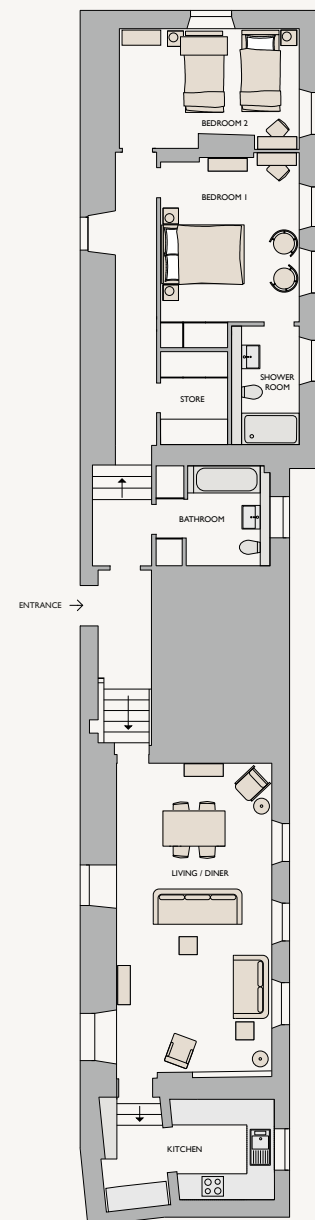
Standing in the heart of Mount Grace's gardens the grounds are yours to enjoy.



1 mile

5 miles

6 miles



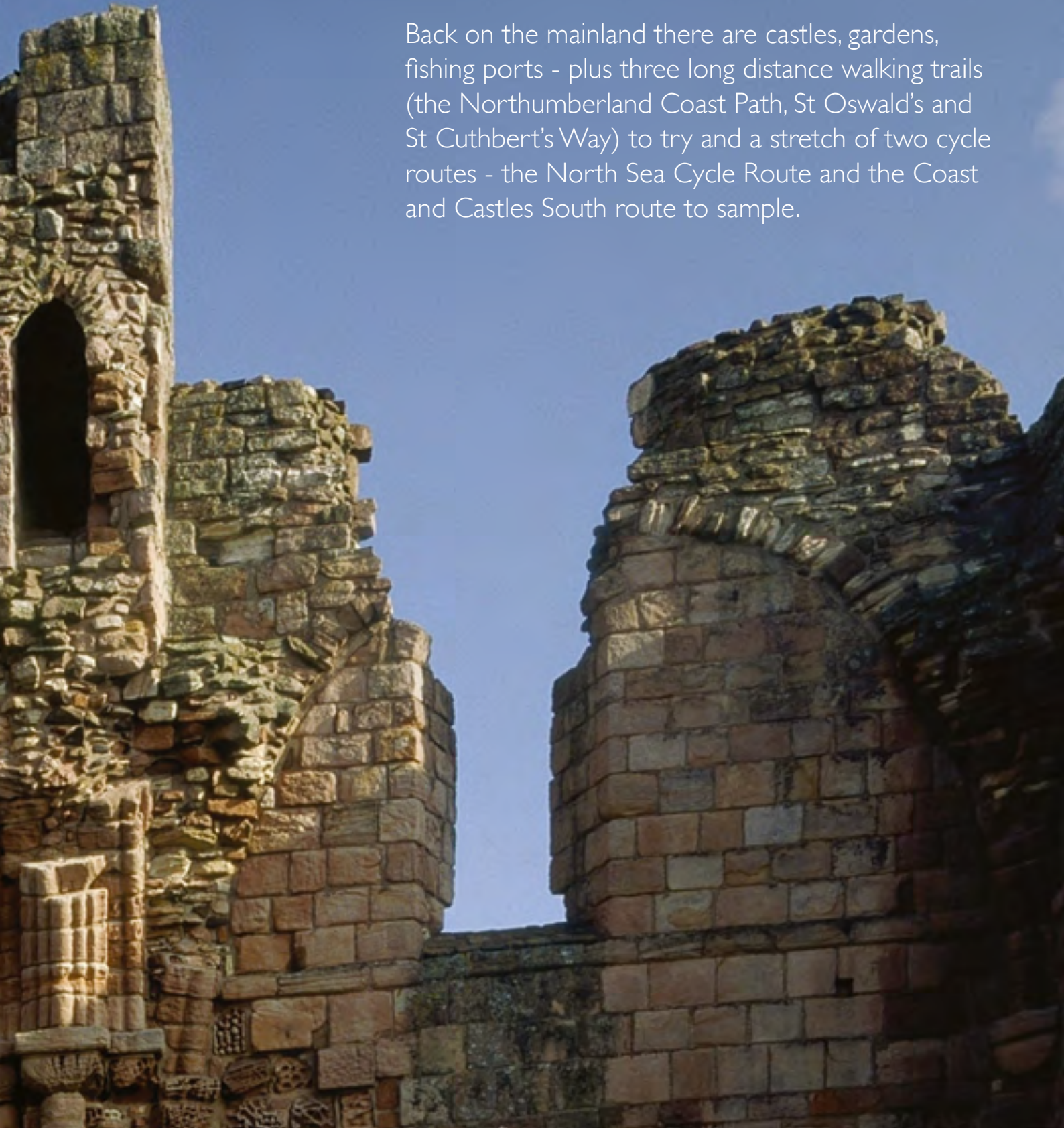
Ground Floor

NORTHUMBERLAND



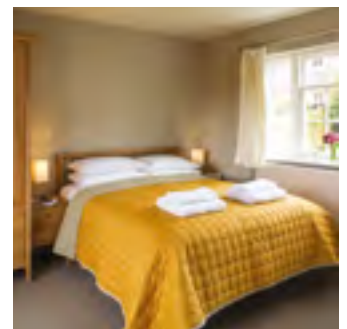
From spotting the puffins and seals on a boat ride to the Farne islands to watching the Aurora Borealis, a stay in Northumberland is filled with unique experiences. The stretch of coastline between Berwick upon Tweed and Warkworth is designated as an Area of Outstanding Natural Beauty with tranquil islands, wide beaches, marshes and saltflats, coves and cliffs to explore.

Back on the mainland there are castles, gardens, fishing ports - plus three long distance walking trails (the Northumberland Coast Path, St Oswald's and St Cuthbert's Way) to try and a stretch of two cycle routes - the North Sea Cycle Route and the Coast and Castles South route to sample.





Cross the dramatic causeway to reach the tiny island of Lindisfarne, on a journey that will stay in your memory forever.



LINDISFARNE PRIORY, NORTHUMBERLAND

COASTGUARD'S COTTAGE

Follow in the footsteps of the ancient monks who built their priory here nearly 1,400 years ago, and explore the wild coastal beauty of Holy Island.

Converted with those with mobility issues in mind this three bedroomed cottage has its own garden overlooking Lindisfarne Castle. The untouched coastline gives you a memorable opportunity to soak up Holy Island's unique atmosphere. When the tide washes over it, the island is cast off from the mainland and you can explore the priory ruins all alone.

Visit the museum at Lindisfarne Priory and find out about a grisly Viking raid, the cult of St Cuthbert, and the beautiful medieval manuscript: the Lindisfarne Gospels. Explore the island on foot and discover St Cuthbert's Isle just off the shore from the priory. It was here that St Cuthbert lived out his hermit years. Climb the high ridge known as the Heugh south of the ruins for spectacular views across to Bamburgh Castle and the Farne Islands.

PRICES	From	To
3 nights	£415	£985
4 nights	£445	£1,040
7 nights	£790	£1,855

For full details and our special offers, visit our website or call a member of our reservations team.

WHAT'S ON

The Story of Lindisfarne

The holy island of Lindisfarne on the Northumberland Coast has a chequered past, a home of saints, sinners, serenity and violence. Throughout the summer discover the origins of the Lindisfarne Gospels and tales of grisly Viking raids as three actors tell the 1,000 year story of this wonderful island.

SLEEPS 6 + COT

GROUND FLOOR

Open plan living/dining/kitchen with wood burner, accessible king bedroom with en-suite wet room, utility room.

FIRST FLOOR

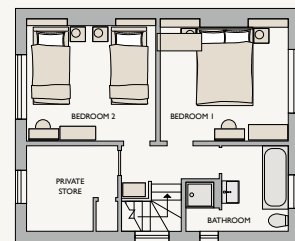
Two king/twin bedrooms, bathroom with bath and shower.

GARDENS

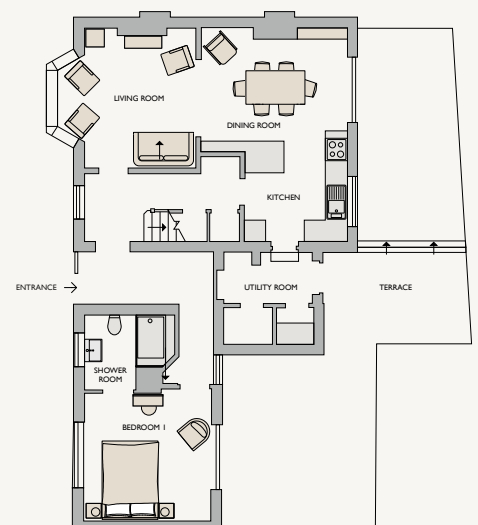
Private driveway and front lawn, enclosed garden to the rear with lawn and terrace overlooking Lindisfarne Castle.



½ mile 6 miles



First Floor



Ground Floor

ESSENTIAL INFORMATION

How to book

Booking an English Heritage holiday cottage is stress-free. Whether it is location, date of stay, size of your party or that dogs must come on holiday too our website will let you search live availability and book your stay. Alternatively call our knowledgeable Reservations Team to discuss your requirements and make your booking.

You will need to pay a deposit to secure a booking, which can be paid by credit or debit card or by cheque. The deposit is one third of the total cost of your stay. Full payment is due 8 weeks before the start of your holiday. Once we have received this payment, full details of your cottage with directions, where to collect your key from and local contacts will be sent to you. All bookings are subject to VAT.

Essential Information

English Heritage Holidays arrival days are Fridays or Mondays except over Christmas and New Year when alternative start days may be applied. Stays can be for as little as 3 nights or as long as you wish. We also offer a 4 night week break as well as a 7 night stay. When staying for a 7 night period that falls over two date bands your holiday price will be prorated. For bookings of two weeks or more, each week will be priced in the date band it falls in.

Check in time is 3pm on your day of arrival except for Pool House at Witley Court that is 5pm. Check out is 10am on the morning of your departure.

We will provide you with a welcome hamper of basic food items as well as toiletry packs in main bathrooms. All electricity, gas, oil and water are included during your stay. Where there is an open fire / wood burner you will find everything you need to light a fire and sufficient wood for the start of your stay. Information will be provided in the cottage on where you can buy additional supplies.

Although our properties are steeped in history our interiors are modern, unique, fully furnished and equipped with TVs, DVD players, CD/DAB Radio music system, hairdryer, iron and ironing board, fridge with freezer compartment, microwave, oven and

hob, washer dryer, dishwasher. Bed linen, hand towels and bath towels are provided as well as tea towels in the kitchen. Please bring your own cot linen.

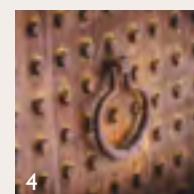
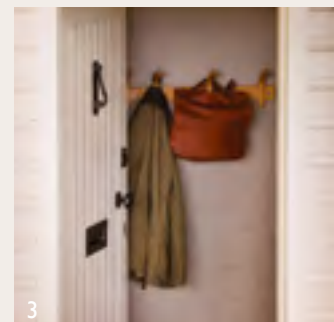
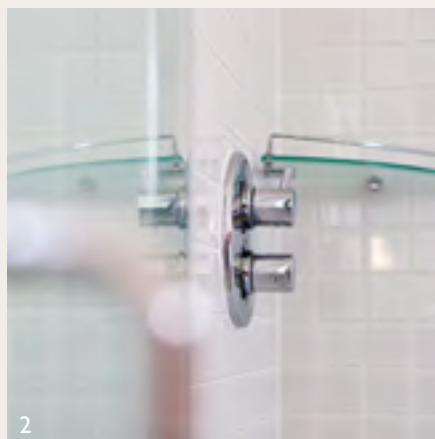
Complimentary wi-fi is available at all cottages except Peacock Cottage. Due to the rural location of some of our holiday cottages, we cannot guarantee that the internet speed will be of a level that you may be used to or that there will be adequate mobile phone signal therefore we provide you with a telephone in the cottage for use during your stay.

We welcome dogs in many of our holiday cottages and allow a maximum of two well behaved dogs where indicated. There is a charge of £30 per stay per dog. Please let us know at the time of booking that you will be bringing your dog/s with you.

Our housekeepers will clean and prepare the cottage prior to your stay and place toilet paper and cleaning materials in it for your use. If you have special requirements or are staying for a special occasion please let our reservation staff know before making a booking so we can do our best to meet them. We can send you access statements should you wish.

One of the many attractions of staying in an English Heritage holiday cottage is the outstanding location and architectural interest. This can mean that access is varied and may at times be over unmade roads, or that the interiors designed for another age are more irregular than modern buildings. For instance stairs may be steeper or ceilings lower. But if you have any particular concerns in these areas, please discuss them before booking.

Some English Heritage holiday cottages are in very rural areas. Sounds created by the rural economy such as harvesting or haymaking, or by animals can sometimes be heard, and at certain times late into the evening or in the early morning. Insects and pests can be a nuisance at some times of year and even the best housekeeping standards may not be able to totally eradicate these. Extreme winter weather could make some of our cottages difficult to reach. In these rare circumstances we will do our best to notify you in advance.



1. Callie's Cottage
2. Prior's Lodge
3. Sergeant Major's House
4. Walmer Castle

TERMS AND CONDITIONS OF BOOKING

For the purposes of the Terms and Conditions, English Heritage means The English Heritage Trust a charity caring for the National Heritage Collection of more than 400 historic properties and their collections. 6th Floor, 100 Wood Street, London EC2V 7AN.

BOOKING A HOLIDAY COTTAGE

1. Agreement

- 1.1 These terms and conditions, which are printed in the Brochure, form the basis of the agreement between you and English Heritage for the holiday rental of the Property named in the Invoice/Confirmation ("the Property") together with all other conditions set out in the Brochure.
- 1.2 You must be over 18 years of age to make a booking and accept full responsibility for all payments due and for the consequences of any actions of all persons who will use the Property during your holiday. If payment is made by credit/debit card by telephone, you will have deemed to have read all the Booking Conditions and agreed to be bound by them.

2. Booking & Pricing

- 2.1 English Heritage will confirm the booking on receipt of a deposit of one third of the holiday rental fee ("the Deposit").
- 2.2 Once English Heritage has confirmed the booking from you in writing and has received the Deposit then an agreement exists between us on these terms and conditions.
- 2.3 If the holiday is due to start within 56 days of the date of booking the total of the holiday rental fee is payable at the time of booking.
- 2.4 No subsequent changes may be made to any part of the Booking without English Heritage's express written approval.
- 2.5 All prices quoted in our brochures, by telephone or on our website include VAT. If the VAT rates change, we reserve the right to change our prices accordingly.
- 2.6 All prices quoted in our brochures, by telephone or on our website include all charges for water, gas, electricity, and oil.
- 2.7 Special Offers are only valid if quoted at time of booking and cannot be combined nor back dated to existing bookings.
- 2.8 Whilst the information concerning our Properties is correct at the time of publishing, we reserve the right to amend prices, services, or other particulars contained in published information at any time before we enter into a contract with you.

3. English Heritage's Right to Refuse/Terminate a booking

- 3.1 English Heritage reserves the right to refuse any booking.
- 3.2 English Heritage reserves the right to terminate this Agreement and ask you and your guests to leave immediately if this is deemed necessary by English Heritage as a result of your behaviour or that of your guests or any other material breach by you of the terms of this Agreement.

4. Final Payment

- 4.1 The balance of the holiday rental fee less any Deposit is due 56 days before the start of the holiday. If the balance is not received on time English Heritage reserves the right to cancel your booking and retain the Deposit as a cancellation fee.

5. Tenancy

- 5.1 This Agreement is for the purposes of a holiday rental only and does not create the relationship of Landlord and Tenant between you and English Heritage. You will not be entitled to a tenancy or to any other form of statutory security of tenure as a result of this Agreement.

6. Description and facilities

- 6.1 English Heritage will endeavour to inform you at the time of booking of any changes to the brochure or website description of the Property or of any English Heritage organised events which may be taking place at its site near the Property during your holiday. English Heritage does not accept any liability for any works or activity of any sort occurring on its premises adjoining or neighbouring the Property.

CHANGING OR CANCELLING A BOOKING

7. Change of Booking

- 7.1 English Heritage will endeavour to assist you in a transfer of a booking to an alternative property or an alternative date or duration at your request.
- 7.2 Changes cannot be accepted within 56 days of the start date of the holiday.
- 7.3 If prior to 56 days a change results in a reduction in the length of the holiday your balance will be adjusted accordingly.
- 7.4 If prior to 56 days a change results in a reduction in your holiday cost (excluding extras) your refund will be processed within 14 working days.
- 7.5 If prior to 56 days a change results in an increased holiday cost this must be paid immediately to secure the change.

8. Cancellation

- 8.1 You may cancel your booking at any time provided you do so in writing to English Heritage. Your booking will be cancelled with effect from the day we receive your written notification.

The following cancellation charges will apply:

No. of days prior to holiday start date	Cancellation charge
More than 57 days	33% - (deposit)
Less than 56 days	Full balance

- 8.2 English Heritage reserves the right to cancel the booking any time in the event of circumstances beyond the reasonable control of English Heritage or if in the reasonable opinion of English Heritage it is necessary to undertake essential works at the Property. In these unlikely circumstances English Heritage will endeavour to offer a suitable alternative English Heritage holiday. If no such alternative holiday is agreed between us then English Heritage will refund in full all money received by us for the booking. English Heritage will not otherwise be liable for any loss incurred by you as a result of the cancellation.

DURING YOUR STAY

9. Arrival and Departure Times

- 9.1 The holiday rental period begins at 3.00pm (5.00pm at Pool House, Witley Court) on the first day of your booked stay and ends at 10.00am on the day of the departure. If your stay extends beyond this period you may be subject to a charge for the additional days.

10. Occupation of the Property

- 10.1 You must not use the Property for any purpose other than that of a holiday. Functions, celebrations, ceremonies and parties are not permitted.
- 10.2 The number of people staying in the Property must not exceed the maximum number stated in the brochure or website or agreed in writing at time of booking and the use of tents or sleeping in motor vehicles adjacent to the Property is not permitted.
- 10.3 You must not use the Property for any activity or in such a way as to cause nuisance or annoyance to English Heritage, its visitors or its neighbours.

- 10.4 You and your guests must comply with any reasonable regulations relating to the Property, or the site within which the Property is situated, which will be communicated to you on your arrival at the Property.

11. Our Obligations

- 11.1 Should any of the published facilities within our Properties change or become unavailable after we enter into a contract with you we shall notify you in writing immediately.
- 11.2 Where a significant change exists we will always endeavour to advise you prior to your arrival.

12. Your Obligations

- 12.1 You agree to keep the Property and its contents in the same condition and repair as on your arrival at the Property and to pay to English Heritage upon written demand any costs incurred in making good any loss or damage to the Property or its contents caused by your action or omission or that of any guest or animal accompanying you.
- 12.2 You will be provided with an in-property information folder at your accommodation that contains important information about your stay with us. Please ensure that you and your party read it carefully on arrival. You must also ensure that you and your party familiarise yourselves with the layout of the accommodation and the location of the fire exits.
- 12.3 No pet is permitted at a Property other than a maximum number of two well behaved dogs at those properties indicated in the brochure or website. Dogs must stay downstairs, remain off all furniture and be under kept control at all times. A charge of £30 per stay is made for each dog (there is no charge for guide dogs or hearing dogs). If you use a guide dog or a hearing dog and wish to stay at one of our properties where dogs are not normally permitted, please discuss with our reservation staff, who will make every effort to accommodate your needs within localised property restrictions. All dog waste must be removed from the Property, gardens and grounds prior to the end of your holiday. If extra cleaning is required as a result of dogs at the property an additional cleaning fee will be charged (see 12.5).
- 12.4 You must allow anyone authorised by English Heritage to enter the Property during the holiday. English Heritage will endeavour to give you reasonable notice of such a visit except in an emergency when immediate access must be allowed.
- 12.5 You must ensure that the Property is left in a clean and tidy condition at the end of your holiday as you found it. English Heritage reserves the right to charge a fee of up to £500 for any additional cleaning we consider necessary following your holiday at the Property. In the event that we decide to charge you for additional cleaning we will write to you detailing the additional cleaning required within seven working days of the end of your stay.
- 12.6 Smoking is not permitted in any part of the Property. You and your party must not smoke inside the Property. You and your party must not use candles, fireworks or Chinese lanterns at the Property. You and your party must not use a barbeque at the Property unless we have provided one.
- 12.7 If the Property has an open fire, woodburner or barbeque you must comply with the instructions found in the in-property information folder, particularly regarding the appropriate fuel to use and disposal of ash for your safety.
- 12.8 You may be required to pay a security deposit before your holiday start date. If this applies to your booking you will be advised at the time of booking. The security deposit will be refunded within two weeks of the end of your holiday, less any reasonable costs for making good any loss or damage to the Property or its contents during your holiday or for any additional cleaning that may be required.

13. Site Activity

- 13.1 In order to maintain the buildings and grounds in our care regular maintenance and gardening activity is undertaken. When possible this activity will take place between 10.00am and 3.00pm on arrival days in order to minimise disturbance during your stay. English Heritage will inform you in the in-property information folders of site activity.
- 13.2 All of our Property sites are used for either English Heritage Events, Weddings, Private party or Corporate event hire as well as commercial filming. You will be notified in writing of any English Heritage organised events or filming taking place during your stay that could have an impact on your enjoyment of your holiday.

14. Complaint

- 14.1 If you have any cause for complaint during your holiday at the Property please notify the Housekeeper or a member of site staff who will make all reasonable efforts to assist and resolve the issue. English Heritage will not normally make any refund or recompense in respect of a complaint made after departure if the complaint was not made known to the Housekeeper or a member of site staff during the holiday rental period.

15. Lost Property

- 15.1 English Heritage shall not be responsible for loss or damage to any of your belongings or for any injuries sustained by you or any of your guests unless caused by the negligence or default of English Heritage.

PERSONAL DATA

16. Data Protection

- 16.1 All personal data provided to English Heritage will be held and processed in accordance with the requirements of the 1998 Data Protection Act. We will keep your personal data safe and secure. We will not share it with other organisations without your knowledge and consent, unless required by law to do so.

17. Force Majeure

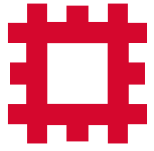
- 17.1 We shall neither be in breach of these terms and conditions nor liable for delay in performing, or failure to perform, any of our obligations under these terms and conditions if such delay or failure result from events, circumstances or causes beyond its reasonable control.
- 17.2 An event outside our reasonable control means any act or event that is beyond our reasonable control, including without limitation fire, explosion, storm, flood, earthquake, subsidence, epidemic or other natural disaster, strikes or industrial action by third parties, terrorist attack or threat of terrorist attack, war or threat of war, civil commotion, riot, invasion, or failure of public or private telecommunications networks.

18. Insurance

- 18.1 It is a condition of your contract with us that you and all members of your party have comprehensive travel insurance cover and that it is adequate for your needs. Your policy of insurance should provide cover for personal injury, death, medical and repatriation costs in the countries which you intend to visit, together with cover for loss of baggage and valuables, personal liability, delay, cancellation, curtailment, missed departure and legal expenses. If you suffer from a disability or medical condition you should disclose this to insurers.

19. Governing Law

- 19.1 These terms and conditions and any dispute or claim (including non-contractual disputes or claims) arising out of or in connection with it or its subject matter or formation shall be governed by and construed in accordance with the law of England and Wales.



ENGLISH
HERITAGE

UNIQUE GIFTS

INSPIRED BY HISTORY

Whether you're looking for guidebooks to read prior to your arrival, a souvenir to remind you of your visit, a unique gift or a tasty treat from our food & drink collection, you'll discover something a little bit different in our gift shops and online.

- Exclusive & unique gifts
- Traditionally made food & drink
- Collectable replica swords & armour
- Beautiful tapestries & wall hangings
- Traditional toys & games
- Clothing & accessories
- Guidebooks & historically inspired books for all ages
- Jewellery for all occasions
- Souvenirs to remind you of your visit



10% OFF

AT OUR GIFT SHOPS
DURING YOUR STAY

And at our online shop for
a month after your holiday

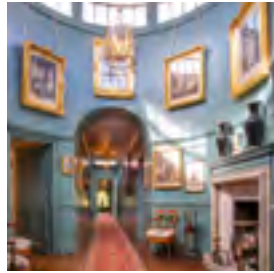
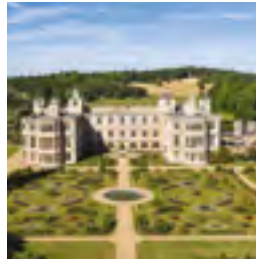
english-heritageshop.org.uk

Step into England's story

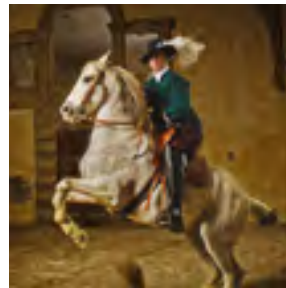
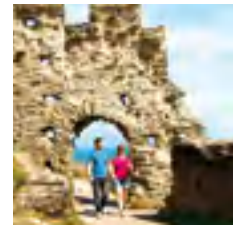


ENGLISH
HERITAGE

JOIN
TODAY



UNLOCK
400 HISTORIC
PLACES



20% OFF MEMBERSHIP

When you join by annual Direct Debit

English Heritage membership is your key to 6,000 years of living history. You'll be able to see, feel and experience history first-hand from just £36.80.

- Unlimited access to over 400+ historic places
- Free handbook worth £10.95
- Exclusive Members' Magazine, four times a year
- Free or reduced price entry to our exciting events
- Free entry for up to 6 kids

Your support will play a vital part in keeping the story of England alive.

*Offer not available in conjunction with any other offer. Not available on monthly Direct Debits. Offer ends 31st December 2018.

JOIN NOW

ehjoin.org.uk

0370 333 0601

USE CODE

HC20

Step into England's story

Step into England's story



ENGLISH
HERITAGE

English Heritage cares for over 400 historic monuments, buildings and places – from world-famous prehistoric sites to grand medieval castles, from Roman forts on the edge of an empire to a Cold War bunker. Through these, we bring the story of England to life for over 10 million visitors each year.

The English Heritage Trust is a charity, no. 1140351, and a company, no. 07447221, registered in England.

www.english-heritage.org.uk

English Heritage, The Engine House, Fire fly Avenue, Swindon SN2 2EH

Cover image: Dover Castle

23996/BD4408/JAN18/PAR5000