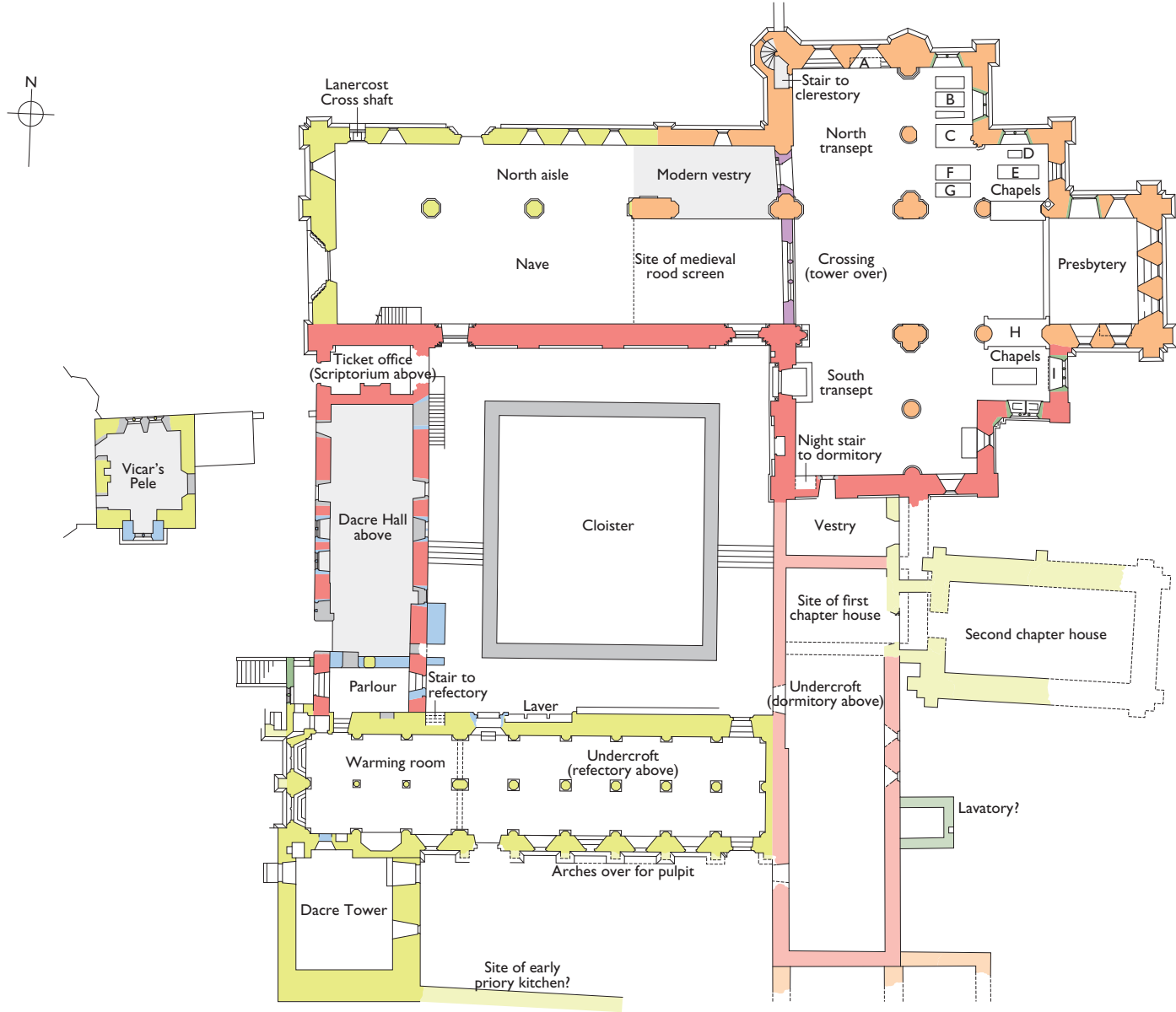


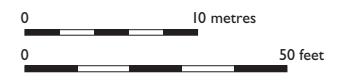
LANERCOST PRIORY



TOMBS

- A Sir Roland de Vaux of Triermain (d.14th century)
- B James Dacre (d.1716)
- C Humphrey, 1st Baron Dacre (d.1485), and Mabel, Lady Dacre (d.1510)
- D Lady Elizabeth Dacre Howard (d.1883)
- E George Howard (d.1879) and Mary Howard (d.1843)
- F George Howard, 9th Earl of Carlisle (d.1911), and Rosalind Howard, Countess of Carlisle (d.1921)
- G Christopher Edward Howard (d.1896)
- H Thomas, 2nd Baron Dacre (d.1525), and Elizabeth, Lady Dacre (d.1516)
- I Charles Howard, 10th Earl of Carlisle (d.1912), and Rhoda Howard, Countess of Carlisle (d.1957)
- J Medieval effigy (memorial to John Crow d.1708)

- Late 12th century
 - Late 12th century to early 13th century
 - Early to mid 13th century
 - 15th century
 - 16th to 17th centuries
 - 18th century
 - Modern or uncertain
 - No visitor access
- Pale shades indicate low walls



This drawing is The English Heritage Trust copyright and is supplied for the purposes of private research. It may not be reproduced in any medium without the express written permission of The English Heritage Trust.
September 2020