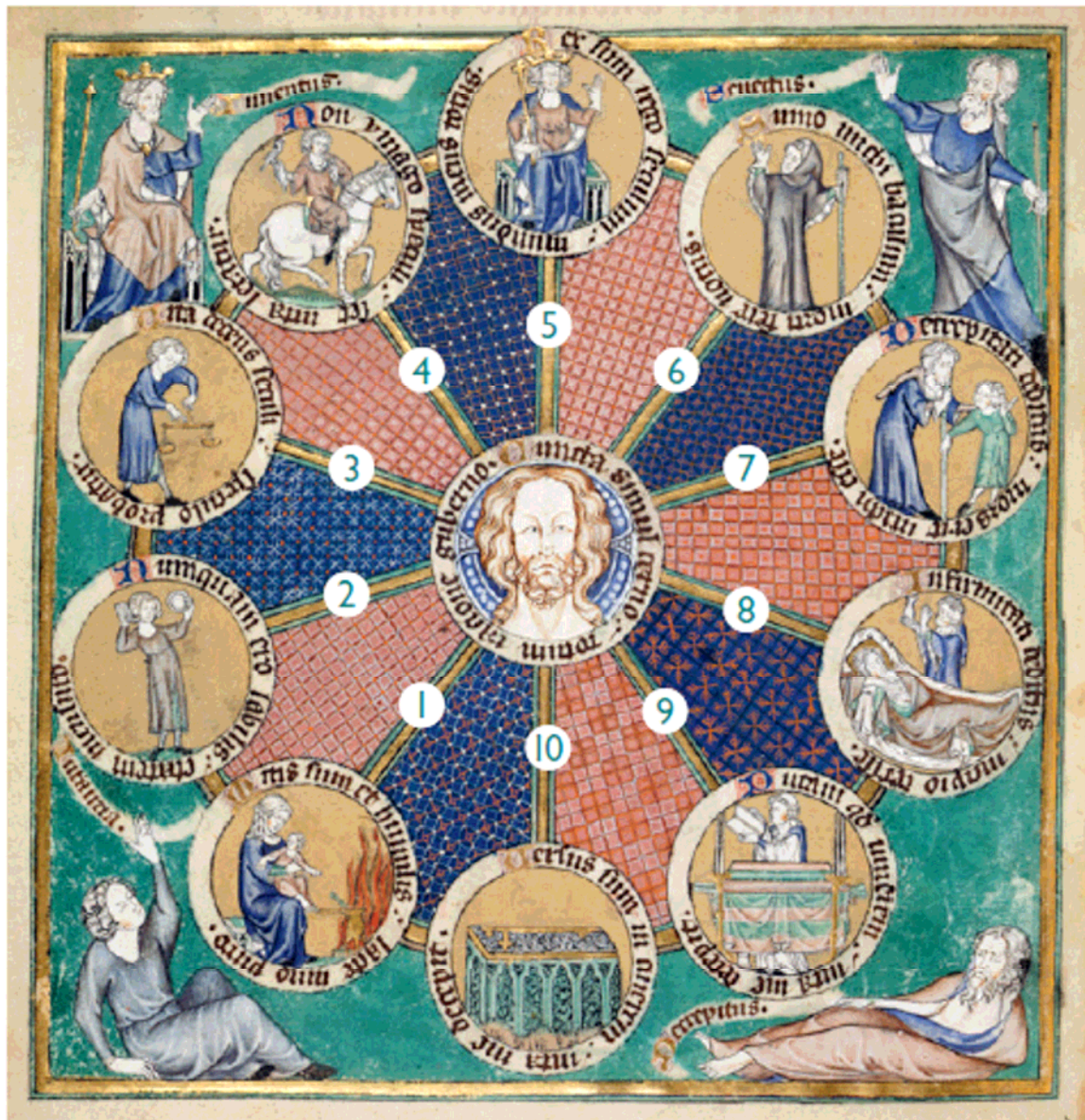


A

# The Wheel of Life



The British Library Board, Arundel 83, f. 126v

One of the most vivid of the church's paintings is the Wheel of Life on the north wall, probably dating to the 15th century. Very similar to the 14th-century manuscript painting above, the wheel shows Christ surrounded by the ten ages of man.



- 1 Woman seated with a child on her knee before a fire
- 2 Boy combing his hair before a mirror
- 3 Youth pointing to a pair of scales
- 4 Young man on a white horse with a hawk
- 5 King on his throne – 'the prime of life'
- 6 Elderly man with a staff
- 7 Blind old man being guided by a boy
- 8 Old man in bed attended by a doctor
- 9 Coffin on a bier, with a monk reading the Office of the Dead
- 10 Tomb