

ENGLISH HERITAGE

WELLINGTON ARCH

MAKE YOUR EVENT

HISTORIC

MEETINGS • RECEPTIONS • DINING

AN ICONIC VENUE

The Duke of Wellington is a glittering figure of England's historic landscape. And the arch that bears his name is an equally iconic landmark of London. With its feet planted in Hyde Park Corner and its top crowned with Europe's largest bronze sculpture, Wellington Arch is a venue that offers you a charismatic and versatile mix of old and new.

You and your guests can enjoy a unique opportunity to imagine 19th-century London as it celebrated victory at the Battle of Waterloo, while at the same time taking in the striking modern architecture that punctuates the capital's skyline and the buzz of the city that fans out below. With rooms across three floors and open air rooftop balconies you've got plenty of options to create a space to match your occasion and time of day.





IDEAL FOR ENTERTAINING

From intimate dinners to a spectacular showcase event for up to 80 guests.

SOMETHING DIFFERENT

Guests love discovering the story of the arch – enjoying a venue that was once both the entrance to London for horse-drawn carriages and subsequently the capital's smallest police station. During your mid-morning coffee break, seeing the mounted Horse Guards passing underneath for the Changing of the Guard is a real highlight.

STANDOUT LOCATION

Hyde Park Corner tube station and Victoria station are just a short distance. It's also an ideal vantage point for views over the city. Watch as the lights come on to dress London's landmarks for the night. From floodlit Buckingham Palace just beside you, to the circling lights of the London Eye.

MAKE IT YOURS

The modern interior gives new life to this famous landmark. Whether you desire full-scale production or elegant simplicity, Wellington Arch is the perfect blank canvas for your event.

ATMOSPHERIC EVENT SPACE

QUADRIGA GALLERY & BALCONIES

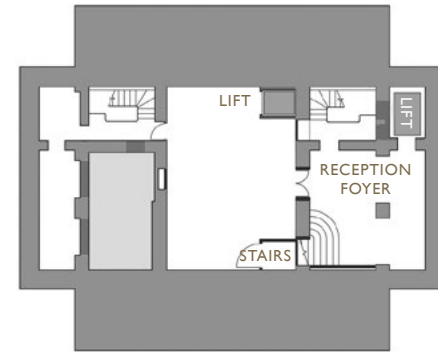
Dining: 36 | Drinks: 80 | Theatre: 40 | Boardroom: 20

From meetings to receptions, the gallery is a sophisticated space which can be dressed to suit your needs. With clean white walls and stylish flooring our spaces can take on different moods with lighting or dressing, creating even more impact and drama at your event. Fully accessible by lift and with doors that open out onto the viewing balconies, it's the perfect venue for a variety of occasions.

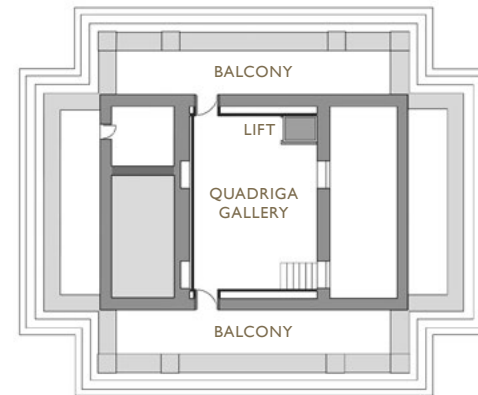




FLOOR PLANS



THIRD FLOOR



GALLERY FLOOR



HIRE PRICE LIST

Wellington Arch is available for exclusive hire seven days a week*.

BREAKFAST HIRE Mon – Fri		DAYTIME HIRE Mon – Fri		EVENING HIRE Mon – Sun	
Jan – Mar	£2,450	Jan – Mar	£4,450	Jan – Mar	£3,450
Apr – Dec	£2,950	Apr – Dec	£6,950	Apr – Dec	£3,950

ROOMS & CAPACITIES**	Standing Reception	Seated Dinner	Theatre	Boardroom	Cabaret
Quadriga Gallery & Balconies	80	36	40	20	18

*Weekend prices available on request.

**Maximum capacities based on room layout.

Prices are exclusive of and subject to VAT.

Prices are for venue hire only and are exclusive of catering, flowers, lighting, entertainment and other decoration. Catering, florists, lighting, entertainment and decoration must be provided by English Heritage accredited suppliers. English Heritage reserves the right to amend prices at any time without notice.

ACCREDITED SUPPLIERS

Due to the historic nature of this property, we kindly ask that you use one of our accredited suppliers for these aspects of your event.

EUROPEAN CATERERS

Blue Strawberry	Tel: 020 7733 3151	www.bluestrawberry.co.uk
By Word of Mouth	Tel: 020 8871 9566	www.bywordofmouth.co.uk
Cellar Society	Tel: 020 8453 7141	www.cellarsociety.com
Cooks & Partners	Tel: 020 7731 5282	www.cooksandpartners.co.uk
Moving Venue	Tel: 020 8691 6661	www.movingvenue.com
Rocket	Tel: 020 7622 2320	www.rocketfood.com
Seasoned Events	Tel: 020 7334 3932	www.seasonedevents.co.uk
Zafferano	Tel: 020 8905 9120	www.zafferano.co.uk

ASIAN CATERERS

Mazaa	Tel: 020 7334 3932	www.mazaacatering.co.uk
-------	--------------------	--

FLORISTS & DECORATORS

Amie Bone Flowers	Tel: 01923 662647	www.amieboneflowers.com
Hayford & Rhodes	Tel: 020 3130 9219	www.hayfordandrhodes.co.uk
Lavender Green	Tel: 020 7127 5303	www.lavendergreen.co.uk
Simon J Lycett	Tel: 020 7277 3322	www.simonlycett.co.uk
Veevers Carter	Tel: 020 7064 3507	www.veeverscarter.com
Violets & Velvet	Tel: 07866 754913	www.violetsandvelvet.co.uk

LIGHTING & PRODUCTION

Creative Spark Services	Tel: 01342 457220	www.creative-spark.co.uk
Event Concept	Tel: 020 7064 3516	www.eventconcept.co.uk
Fisher Productions	Tel: 020 8871 1978	www.fisherproductions.co.uk
White Light	Tel: 020 8254 4870	www.whitelight.ltd.uk
Wise Productions	Tel: 020 8991 6922	www.wiseproductions.co.uk

MUSIC & ENTERTAINMENT

Prelude Entertainment	Tel: 020 3947 8831	www.preludeentertainment.co.uk
Sternberg Clarke	Tel: 020 8877 1102	www.sternbergclarke.co.uk

DANCE FLOORS

White Light	Tel: 020 8254 4870	www.whitelight.ltd.uk
-------------	--------------------	--



EXPLORE OUR OTHER HISTORIC VENUES

ELTHAM PALACE & GARDENS

Invite your guests into the stylish world of the 1930s. Three interconnected Art Deco rooms offer a versatile space with an aura of glamour. While the medieval hall with its magnificent hammerbeam roof and the beautiful moated garden provide a host of options for events of every size.

✉ ElthamPalaceHospitality@english-heritage.org.uk

KENWOOD

Set in the rolling hills of Hampstead Heath, Kenwood is a London venue that feels like it's in the heart of the countryside. With extensive green lawns, lavish interiors and a world-class art collection, the house and grounds are perfect for entertaining indoors and outdoors, day and night.

✉ KenwoodHouseHospitality@english-heritage.org.uk

OSBORNE

Less than 2 hours travel time from London, the beloved family home of Queen Victoria and Prince Albert has a history of hosting every event from intimate family gathering to ambassadorial receptions and royal wedding parties. Three elegant rooms provide the venue for your meeting while larger events can take place in a marquee on the Durbar Lawn, part of 350 acres of beautiful grounds including a private beach.

✉ Osbornehospitality@english-heritage.org.uk

RANGER'S HOUSE

On the fringes of Greenwich Park, this Georgian villa filled with Renaissance art, antique furnishings and a dazzling jewellery collection will lend an air of exclusivity to your event. The wood floored gallery and walled garden offer plenty of options for conferences, dinners and showcases.

✉ RangersHouseHospitality@english-heritage.org.uk

WREST PARK

With its magnificent grounds and honey-coloured mansion house, events held at Wrest Park come ready-made with an unmistakable sense of grandeur. A choice of elegant rooms, a light and airy Orangery and a magnificent marquee site, make it an adaptable venue for all seasons

✉ WrestParkHospitality@english-heritage.org.uk

YOUR SUPPORT MAKES A DIFFERENCE

By hosting your event with us, you'll be playing a vital role in keeping the arch's remarkable story alive. Your support will help us to care for this iconic landmark, and over 400 other historic sites, so that they can continue to inspire us for generations to come.





ENGLISH
HERITAGE

Step into England's story

For more information on hiring Wellington Arch or to book a viewing, contact

 Wellington Arch, Apsley Way, Hyde Park Corner, London W1J 7JZ

 corporate.events@english-heritage.org.uk

 english-heritage.org.uk/wellingtonevents

 020 7973 3858