



ENGLISH HERITAGE

WELLINGTON ARCH

MAKE YOUR EVENT  
**HISTORIC**

MEETINGS • RECEPTIONS • DINING

## AN ICONIC VENUE

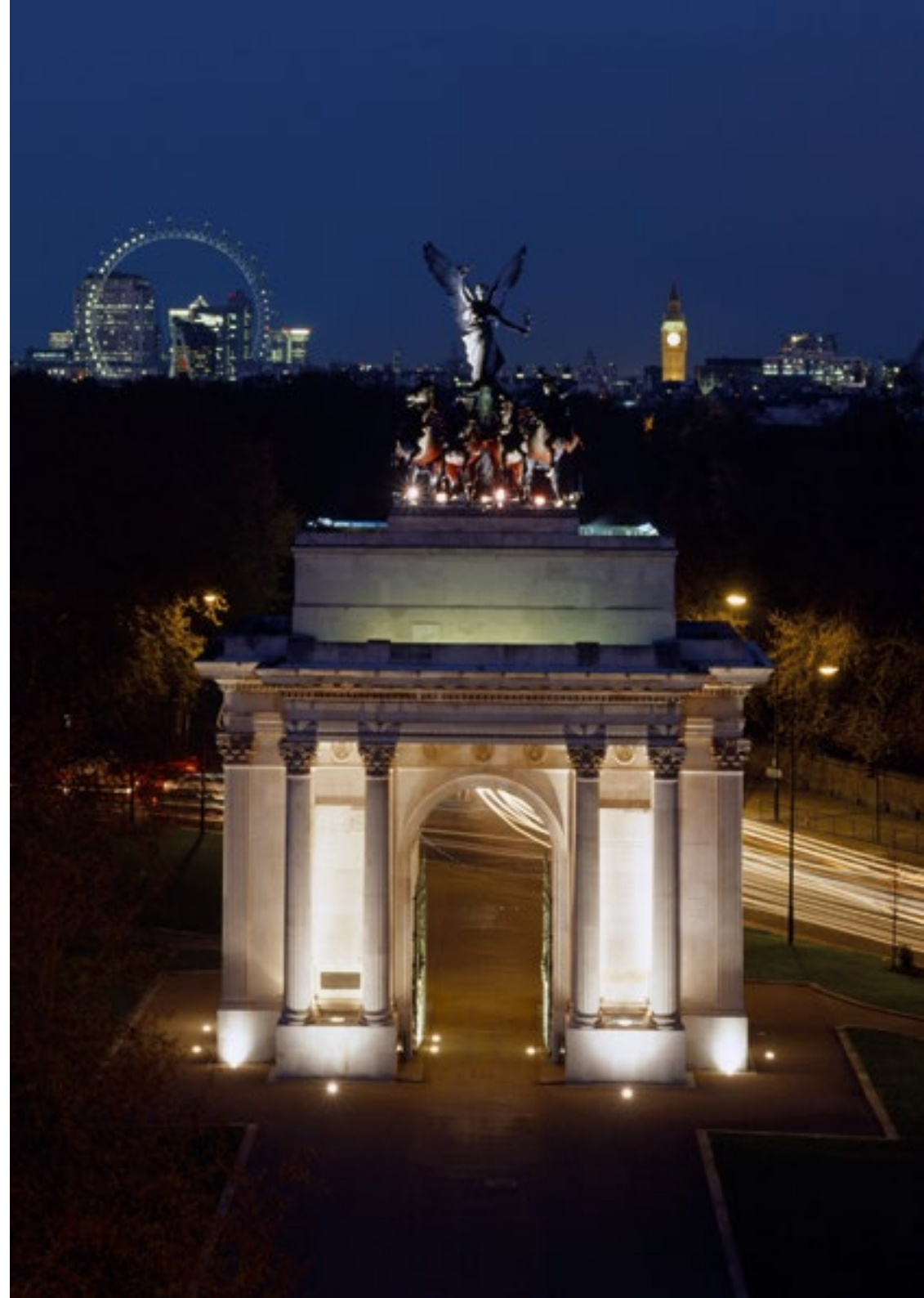
---

The Duke of Wellington is a glittering figure of England's historic landscape. And the arch that bears his name is an equally iconic landmark of London.

With its feet planted in Hyde Park Corner and its top crowned with Europe's largest bronze sculpture,

Wellington Arch is a venue that offers you a charismatic and versatile mix of old and new.

You and your guests can enjoy a unique opportunity to imagine 19th-century London as it celebrated victory at the Battle of Waterloo, while at the same time taking in the striking modern architecture that punctuates the capital's skyline and the buzz of the city that fans out below. With rooms across three floors and open air rooftop balconies you've got plenty of options to create a space to match your occasion and time of day.





## IDEAL FOR ENTERTAINING

---

From intimate dinners to a spectacular showcase event for up to 80 guests.

### SOMETHING DIFFERENT

Guests love discovering the story of the arch – enjoying a venue that was once both the entrance to London for horse-drawn carriages and subsequently the capital's smallest police station. During your mid-morning coffee break, seeing the mounted Horse Guards passing underneath for the Changing of the Guard is a real highlight.

### STANDOUT LOCATION

Hyde Park Corner tube station and Victoria station are just a short distance. It's also an ideal vantage point for views over the city. Watch as the lights come on to dress London's landmarks for the night. From floodlit Buckingham Palace just beside you, to the circling lights of the London Eye.

### MAKE IT YOURS

The modern interior gives new life to this famous landmark. Whether you desire full-scale production or elegant simplicity, Wellington Arch is the perfect blank canvas for your event.

# ATMOSPHERIC EVENT SPACES

---

The Quadriga Gallery provides a contemporary backdrop within this iconic landmark, ideal for meetings, lunches, receptions and fine dining. With clean white walls and stylish flooring our spaces can take on different moods with lighting or dressing, creating even more impact and drama at your event.

## QUADRIGA GALLERY & BALCONIES

Dining: 36 | Drinks: 80 | Theatre: 40 | Boardroom: 20

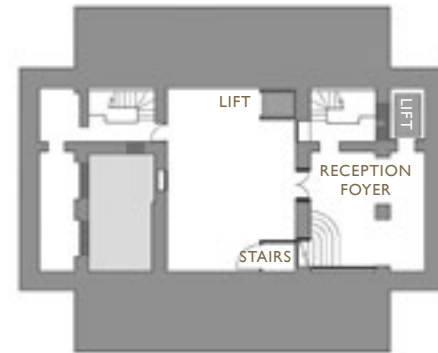
From meetings to receptions, the gallery is a sophisticated space which can be dressed to suit your needs. Fully accessible by lift and with doors that open out onto the viewing balconies, it's the perfect venue for a variety of occasions.



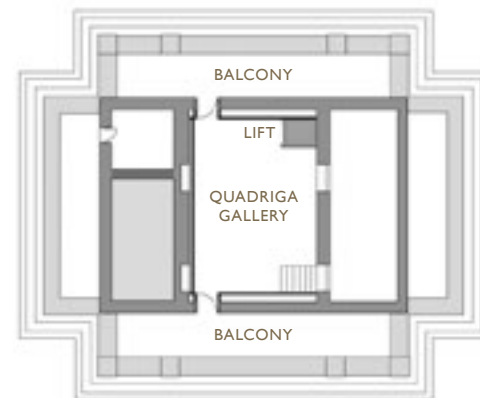


# FLOOR PLANS

---



THIRD FLOOR



GALLERY FLOOR





ENGLISH  
HERITAGE

*Step into England's story*

For more information on hiring Wrest Park or to book a viewing, contact

 Wellington Arch, Apsley Way, Hyde Park Corner, London W1J 7JZ

 [corporate.events@english-heritage.org.uk](mailto:corporate.events@english-heritage.org.uk)

 [english-heritage.org.uk/wellingtonevents](http://english-heritage.org.uk/wellingtonevents)

 0207 973 3418