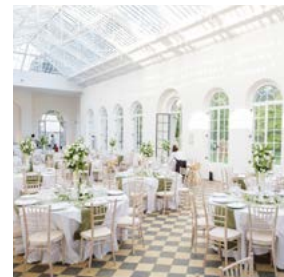
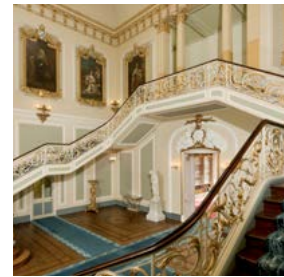




ENGLISH HERITAGE
WREST PARK



Written into Wrest Park's sweeping views, woodland avenues and waterside paths is the story of England's love affair with landscape. For over three centuries the de Grey family created grounds and gardens to appeal to the eye and the soul. From formal design, through the more natural style of Capability Brown, to layouts complementing the chateau-style home, each generation left its mark.

This amalgam of styles gives Wrest its unique charm.

When he rebuilt the house in the 1830s Thomas, Earl de Grey, ensured the interiors were equally charming. He scoured auction houses to find pieces that were the perfect complement to the French style of the house. Clocks and china bought in Paris sat alongside newly commissioned sideboards and looking glasses supplied by leading London firms. In these opulent surroundings the earl and his countess hosted glittering dinners and balls for the cream of 19th-century society.

This remarkable setting, where the outdoor scenery is as impressive as the indoor decor, ensures that you'll have an unforgettable wedding day.

You can sweep up the drive to the front door and enter into a soaring hall with a dramatic staircase where you can pause for wedding photos.

From here you can choose between a number of ground floor rooms for your ceremony and celebrations. The suite of formal rooms open onto each other, so you can move smoothly from drinks to dinner to dancing.

The glass-roofed orangery stands in the dazzling garden. You and your guests can gather for a ceremony bathed in sunshine or watch the stars come out as you're seated for supper.



ROOM HIRE

LIBRARY

CEREMONY: 100 | DRINKS: 100 | DINING: 100

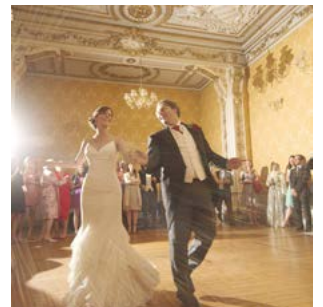
Lined with books on three walls and with elaborate gilded plasterwork, this elegant room was a favourite with the de Grey family because of its stunning views from the floor to ceiling windows.



DINING ROOM

DINING: 60 | DRINKS: 50

In dramatic gold and white and with its original parquet wood floor, this room is ideal for evening events and can be used for dancing.



DRAWING ROOM

CEREMONY: 60 | DRINKS: 60

Once the setting for dances and entertainment, the rich blue Drawing Room boasts original Louis XV features, including a painted gilded ceiling and elegant fireplace.



You can use the above rooms individually or combine to allow guests to mingle for drinks in one room, dine in another and then walk through gilded double doors for dancing.

ROOM HIRE

ANTE LIBRARY & TERRACE

DRINKS: 120

With tall glass doors leading onto the wide terrace and showing off the glorious grounds to perfection, this area is ideal for drinks receptions. In fine weather, guests can step directly outside onto the terrace.



ORANGERY

CEREMONY: 170 | DRINKS: 170 | DINING: 170

Once home to some of the largest orange trees in England, this grand garden pavilion, just a short walk from the main house, is a dazzling venue for a summer wedding ceremony, drinks reception or evening reception.



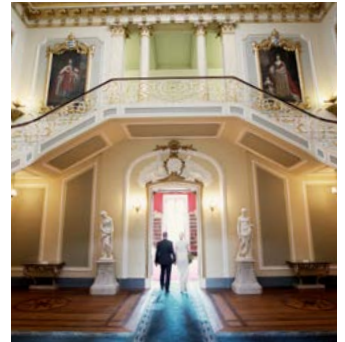
THE EVERGREEN GARDEN

MARQUEE: UP TO 1,000

A marquee site in the Evergreen Garden, shaded by lovely mature trees, can accommodate up to 1,000 guests for dining and dancing in this magical garden setting.



❧ SAMPLE RUNNING ORDER ❧



Congratulations on your upcoming wedding and thank you for considering Wrest Park.

We have put together the following as a guide to costs, suppliers and timings that may need to be considered when planning your wedding here.

Please note that this is designed as a guide only. The timings and how the day runs can be flexible and should be discussed with your hospitality events co-ordinator and suppliers to ensure you have your own wedding day that is unique to you. The prices will vary depending on the number of guests attending and the suppliers you wish to use.

GUESTS ARRIVAL

Guests should start to arrive from 2pm in preparation for a 2.30pm ceremony. Guests may park under the shade of the trees opposite the main house and then enter the Mansion House through the grand doors where our staff will be waiting to greet them. Guests may leave their coats and bags in the cloakroom just inside the foyer and make their way through the dramatic entrance hall with its sweeping staircases.

CEREMONY

The ceremony will last approximately 30 minutes to include the vows and any readings. It can take place in the Drawing Room for up to 60, the Library for up to 100, both set in a traditional theatre style, or in the Orangery for up to 170 which looks fantastic with the registrar's table set in front of the oldest part of Wrest Park, the fireplace.

DRINKS RECEPTION & PHOTOS

Once the ceremony concludes at 3pm, your guests can make their way to the Ante Library where your caterers will serve your reception drinks and spill out onto the Terrace to enjoy canapés overlooking the beautiful gardens. You will have access to all 92 acres of glorious gardens for your photographs. There are many special surprise features including the Archers Pavilion, the Bowling Green, The Bath House and Chinese Temple and Bridge along with over 40 statues dotted throughout the grounds.

❧ SAMPLE RUNNING ORDER ❧

TABLE PLANS

The drinks reception will last approximately one and a half hours from 3pm-4.30pm, leaving plenty of time for photos, mingling and participating in any outside entertainment.

Guests will then be called for Dinner at 4.30pm either by our staff or your Best Man, if preferred.

Although there are many ways to allocate guests' seating arrangements, the simplest and most effective is a table plan. Your chosen caterer can supply a board and easel for them to be displayed during the reception, which can be moved just outside the Library or Orangery as guests are called for dinner. You may also wish to provide place names to be set at each of the tables. If you would like your guests to have a reminder of your day, favours at each place setting are a good idea. Please ask us for some unique ideas and to check that your favours are permitted at the venue before purchasing. There are many different styles and colours of linen, chairs, seat pads, glasses, chinaware and silverware that your caterer will have for you to choose from to perfectly match your taste and chosen theme.

Florists from our accredited supplier list will also be able to provide you with beautiful table centre pieces, and any additional decoration you may want around Wrest Park, as well as your own bouquet and button holes.

WEDDING BREAKFAST

The maximum number of guests that can be accommodated in the Library is 100 and the Orangery is 170, in both a straight top table in front of the fire places makes for a wonderful backdrop for photographs. As guests take their seats for dinner, waiters and waitresses will begin pouring a selection of your dinner drinks as the service of your dinner begins at 4.50pm. Once dinner service has ended, coffee and your choice of toast drinks will be served in preparation for speeches (if these are taking place after dinner). Once dessert has been cleared at 7pm, you may choose this moment to cut your wedding cake.

SPEECHES

Depending on the timings of the wedding, there are many ways that speeches can be carried out;

Before Dinner

It is becoming increasingly popular to carry out the speeches before guests are seated for dinner. At Wrest Park this can take place in the Ante Library or out on the Terrace where guests will be gathered for the drinks reception. Alternatively, it can, of course, take place once guests are seated, before dinner is served.

After Dinner

Traditionally after dessert, champagne is poured and wedding speeches take place, followed by the cutting of the cake.

Before the Evening Party

This option is ideal if you have additional guests for the evening as it enables these guests to hear your speeches and see the cutting of the cake.

EVENING RECEPTION

If you are having additional evening guests, they can be invited from around 8pm, your first dance can take place soon after to signal the start of your evening festivities. Depending on your chosen caterer, you can either opt for a cash bar or a free bar. You may wish to have some evening catering, this would be served at 9.30pm. At 11.30pm and music will finish, the bar will close as your big day starts to wind down with guests departing by midnight.

SAMPLE COSTS

To give you an idea of costs we have put together a sample guide to help you budget for your day.*

• **VENUE HIRE** FROM £1,950

• **CATERING** FROM £122pp** (All of our caterers can offer a completely bespoke quote.)

THIS INCLUDES: Canapé reception (4 per person)

Sparkling drinks reception

3 course meal with bread, coffee & petit fours

½ bottle of house wine, jugs of iced water (per person)

Sparkling toast drink

Round tables, chairs, cake table, high top bar

Linen, crockery, cutlery, glassware

Event manager

Delivery and set up

• **REGISTRAR** FROM £285

• **DANCE FLOOR** FROM £300

• **OTHER CONSIDERATIONS**

Evening bar, evening food, flowers, evening entertainment, cake and photographer .

For our full list of accredited suppliers, please request our full brochure.

All prices are subject to VAT.

*These prices are a guide only. Please contact us for your bespoke quotation.

**Based on a minimum of 100 guests

All prices are subject to VAT.

TESTIMONIALS

“Thank you for looking after us so well and we have had an amazing time.”

Jessica & Philip | August 2017

“Thank you so much for all your hard work and for making this a magical day.”

Jennifer & Adam | August 2017

“We had an amazing day and all our guests really enjoyed the event thanks to you and your team. Again thank you for being so accommodating and helpful; the event went very smoothly. We would love to come see you and say thanks in person and get to enjoy a stroll around the grounds soon.”

Nina & Marcus | July 2017

“I would like to thank you for all your help with all the preparations and for the main event. It was such a lovely day and it all went smoothly. All our guests were amazed with Wrest Park. It was the perfect choice for our wedding.”

Mr & Mrs Fadi | July 2017

“Thank you so much and just to say we had a wonderful day. Thank you for making it special and I will highly recommend you to anyone that is looking for a lovely venue for a wedding.”

Mr & Mrs Corkett | June 2017

Contact our hospitality team for a full brochure and to arrange a viewing.

☎ 01525 863 704 ✉ WrestParkHospitality@english-heritage.org.uk

ROOMS & GARDENS

