



ENGLISH HERITAGE



SUMMER EXPLORER QUEST



Congratulations on completing the Summer Quest
We hereby certify that

is now an official explorer!



ENGLISH HERITAGE

SUMMER EXPLORER QUEST



Welcome to the Summer Explorer Quest at Bolsover Castle!
There are 11 boards located around the castle, find them all
and complete the activities as you go along!

Please keep a safe distance from others and follow any
directional signs.

Unscramble the letters to reveal the name of a family who lived
here at Bolsover Castle...

H I E S N D A V C

Can you spot the following in the Riding School

- The viewing Gallery
- The 'pillar'
- Putlog holes (look for square holes in the wall)

Can you work out what the 'pillar' and the putlog holes may have
been used for?

Which Greek Goddess features in the Fountain Garden?

- Hercules
- Venus

How many different characters or animals can you see on or
around the fountain?

How many windows can you count on the Little Castle?



You're the cook in William Cavendish's kitchen! Can you find the
following?

- The oven to cook the bread
- The fire to roast the freshly caught main course
- The room used by William to store his ale
- Don't forget the sink to wash up all the dirty pots!

1

2



Can you spot the witches marks by the windows in the Star Chamber?

Clue - you are looking for circular marks! Draw what they look like below

There are five paintings in the Pillar Parlour which represent each of the five senses.

Can you name the five senses and imagine what they might have been representing in the Pillar Parlour? We have included 1 to get you started!

1. Sight – big windows! So guests could enjoy spectacular views over the valley.
- 2.
- 3.
- 4.
- 5.



Design your own family crest here!

What can you make out on the Cavendish family crest?

Draw or describe what you can see using the space below.



5

6

Did you spot any bullet holes along the Terrace Range?

The Long Gallery was also used as a space for which activity?

- Exercise, when it was raining outside
- To ride the horses in

During the English Civil War Bolsover was a Royalist site, but who were the Royalists fighting against?

- Parliamentarians
- Civil Soldiers

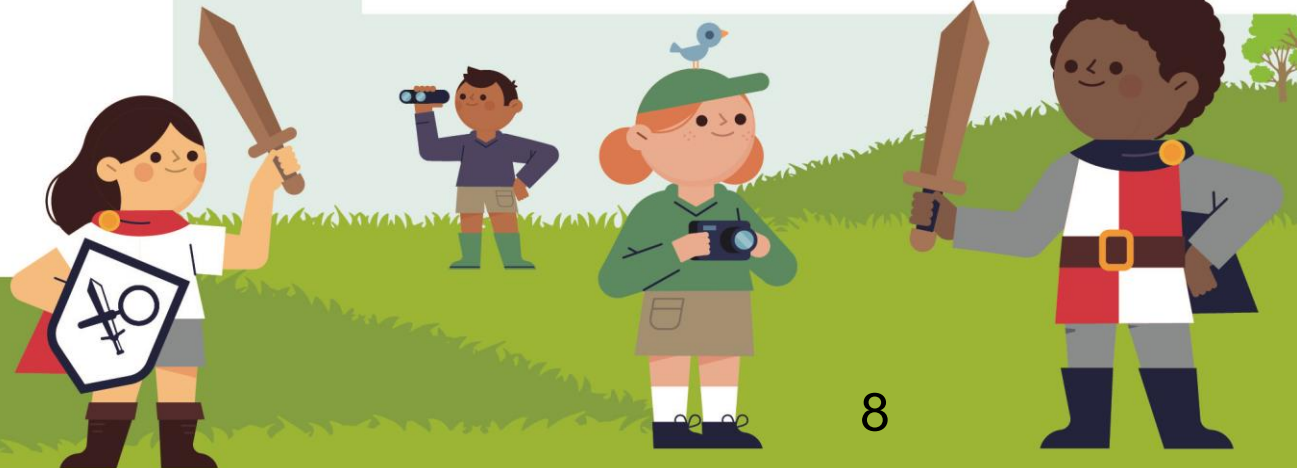
Clue - they were also known as Roundheads!

William may I!

Find some space here at Bolsover Castle to play William and I.

Make sure you keep a safe distance away from other people at all times.

1. Pick someone to be William Cavendish. William stands a good distance away from the other players, facing away from them. The other players line up away from William on a start line.
2. One by one each player takes it in turns to ask William if they can move forward using a specific step and number, for example, 'William, may I take 3 giant steps forward?'
3. William can say yes or no – but must not turn around.
4. After everyone has asked William once, William then picks each player and instructs them on a number and step to move for example – 'xxx you may take 3 giant steps forward'.
5. The chosen player must then reply and say 'William, may I take 3 giant steps forward?' if the chosen player forgets to say 'William may I' they have to go back to the start line!
6. You can use any kind of step; giant steps, baby steps, skips, jumps etc!
7. The first player to reach William wins and can be William in the next round.



Have a go at our Bolsover Castle word search!

Can you find all 7 hidden words?

V C M T P B T S Q J Q T N T Z
 R E B M A H C R A T S J E C C
 L J N F Q N S L N G B K A P A
 E T F U B S J I Y E S R U Z E
 J I J C S X F L D U Y M P H C
 M Q C F W N O Q M N J W F Y A
 S B B G O T N H F N E I B U R
 R Q C G S J N F O B Z V K J R
 N B Y N H C V M Q Z R Q A G E
 Y J Y L O F J U R N M O F C T
 P Q J I R T X P A R T Y S F U
 Y K W C S O Z E F K E O F E S
 O T A D E W G U K J B I B W K
 D H M B Z S V O G U B P A G O
 P X Z H T P X C Z E H Q N H H

Words to find:

- CAVENDISH HORSE
- MUSKET PARTY
- VENUS TERRACE
- STARCHAMBER

Can you spot the following around Bolsover Castle?

