

Heritage Data Quick Guides

Historic Environment Thesauri

Heritage Data Management staff have been involved in the production and maintenance of numerous thesauri. Listed below are some of the thesauri that we have produced.



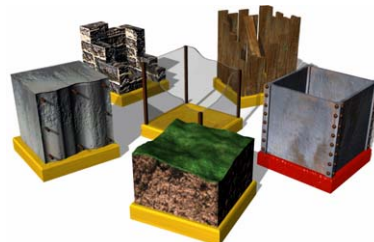
Archaeological Objects

Developed by the mda, English Heritage and other heritage organisations. Archaeological objects can be defined as any physical evidence, usually portable, resulting from past human activity and human interaction with the environment, or environmental remains, that can be recovered through archaeological fieldwork. Includes for example 'KNIFE', 'JEWELLERY' and 'AMPHORA'



Building Materials

Covers construction materials used in historic buildings and monuments. Includes, for example, 'LIMESTONE', 'LEAD', 'COB'.



Components



A component can be defined as an entity forming part of a structure, building or piece of machinery that has a specific functional usage or decorative form. The Components Thesaurus was developed to meet the needs of those recording elements of buildings and structures that do not readily fit into the existing concepts of 'monument type' or 'object type'. Includes areas and spaces (e.g. CLOISTER), decorative features (e.g. CATS HEAD MOULDING), structural components (e.g. BUTTRESS), fixtures and fittings (e.g. TABERNACLE).

Evidence

Terminology covering the existing physical remains of a monument (e.g. CROPMARK), or the means by which a monument has been identified where no physical remains exist (e.g. DOCUMENTARY EVIDENCE).



Historic Aircraft Types

To assist in the recording of aircraft remains and crash sites. The thesaurus covers aircraft form (e.g. SPITFIRE), function (e.g. FIGHTER) and manufacturer (e.g. SUPERMARINE).



Maritime Place Names

Covering the names of ports of departure, destination and registration of vessels lost in English waters. Focussing on English ports (e.g. SOUTHAMPTON, or FLEETWOOD), the thesaurus also includes those ports from across the world which have historically traded with England (e.g. TANGIER).



Monument Types

Widely used within the heritage community. Includes both architectural terms (e.g. ART GALLERY) and archaeological terms (e.g. HENGE) to describe the historic environment.

Watercraft Types

Terminology covering inland waterways and sea-going craft types, from AIRCRAFT CARRIER to LOGBOAT. Based on the experience of compiling the national maritime inventory for the National Monuments Record of English Heritage.



If you would like to find out more about the thesauri mentioned above and others that we have been involved in please look at www.english-heritage.org.uk/thesauri

For any further details contact:

Heritage Data Management
English Heritage
National Monuments Record Centre
Swindon, SN2 2GZ

Tel: 01793 414883
Fax: 01793 414770
email: hdmfinfo@english-heritage.org.uk
web: www.english-heritage.org.uk/heritagedata